

家用压缩机

Household Compressor

系列产品介绍
Household Compressor Catalogue



家用制冷
For Household Refrigerant
R600a · R134a

产品 2023 家用制冷 R600a · R134a



长虹华意压缩机股份有限公司

地址：江西省景德镇市高新开发区长虹大道1号
邮编：333000
电话：+86 798 8470233
传真：+86 798 8433653
邮箱：export@hua-yi.cn
网址：www.hua-yi.cn



Changhong Huayi Compressor Co.,Ltd.

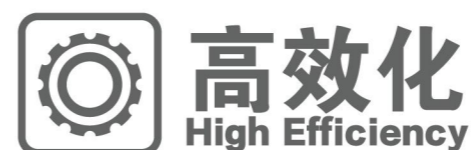
Add: No.1 Changhong Road, Hi-tech development zone,
Jingdezhen city, Jiangxi Province, China
PC: 333000
Tel: +86 798 8470233
Fax: +86 798 8433653
E-mail: export@hua-yi.cn
Website: www.hua-yi.cn



长虹华意

Changhong Huayi

High Efficiency •
Variable Speed
Intelligent
Modularized
Miniaturized
High Reliability
Wide Range Application
Low Noise



Changhong Huayi

家用压缩机

Household Compressor

系列产品介绍

Household Compressor Catalogue

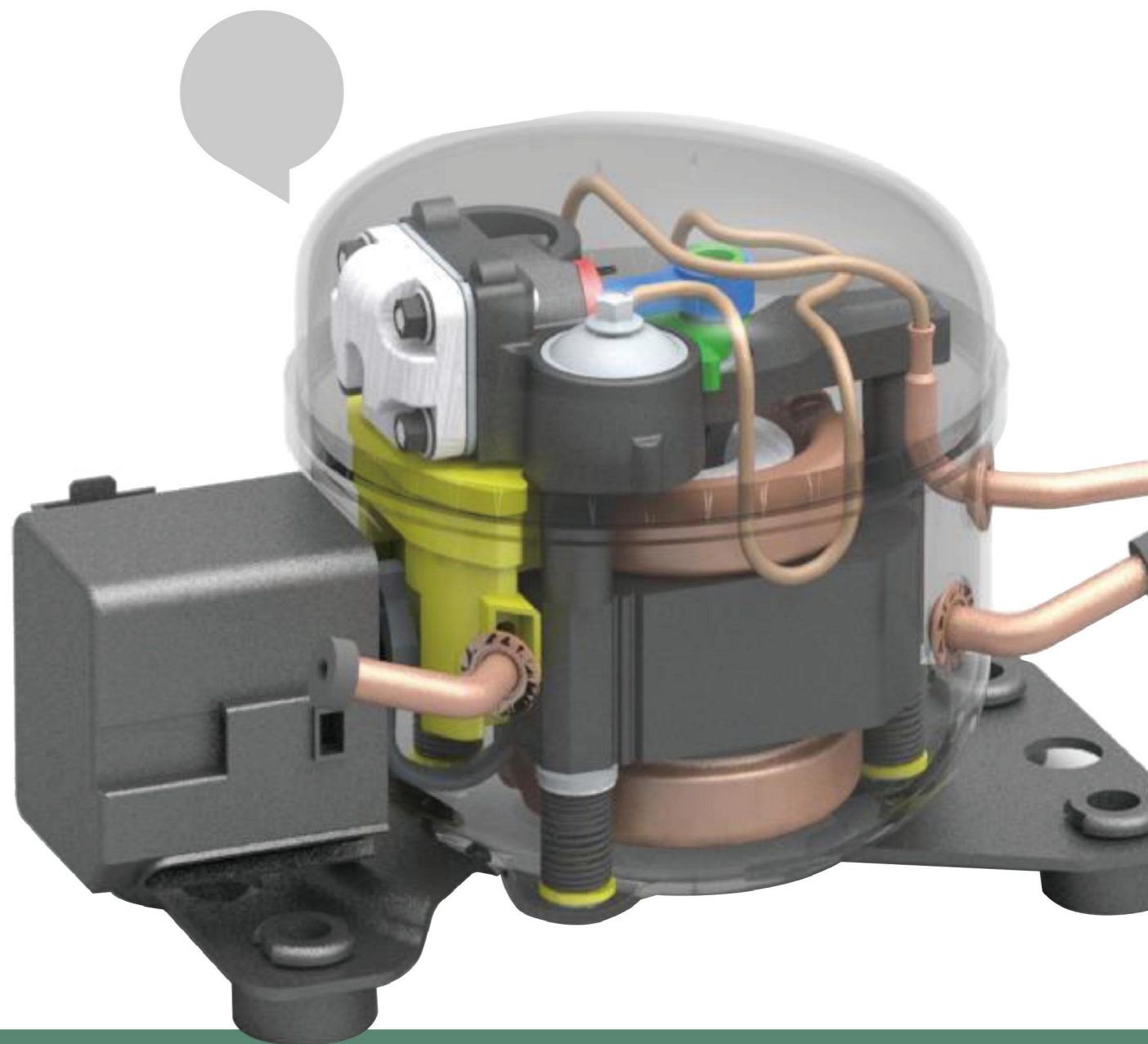
Changhong Huayi

家用制冷 For Household Refrigerant

产品 2023

家用制冷 R600a · R134a

R600a · R134a



 长虹华意
HUAYI

高效 | 结构紧凑 | 静音

01

General Information

简介

公司	Company	04
产品	Product	05
压缩机系列	Compressor Series	07
先进的产品实验中心	Advanced Products Laboratory Center	09
压缩机系列主要特征	Compressor Ranges Main Characteristics	10
铭牌和认证	Identification Labels And Approvals	10
命名规则	Compressor Nomenclature	11
电压	Voltage	12
应用	Applications	12
SOA安全工作区	SOA Safe Operating Area	13
电机类型	Type Of Electrical Motors	14

02

Compressor Catalogue

压缩机产品名录

变频压缩机	Variable Speed Compressor	17
R600a		22
R134a		29

03

Technical Information

技术信息

一般技术信息	General Technical Information	35
外形尺寸图	Dimensional Drawings	37
包装	Packaging	39
附件	Components	40
安装方式	Mounting Type	40
接线示意图	Wiring Diagram	41

目录

CONTENTS

PART 01

公司简介

Company Introduction

Changhong Huayi



长虹华意压缩机股份有限公司介绍

Introduction of Changhong Huayi Compressor Co., Ltd.

长虹华意遍布全球；总部在中国，在欧洲设有分公司。

ChangHong Huayi group located worldwide; headquarters in China, and branch in Europe.



长虹华意压缩机股份有限公司是以研发,生产冰箱、冷柜、饮水机、制冰机及除湿机等制冷电器的各类压缩机为主营业务的跨国公司,于1990年设立,1996年在深圳证券交易所成功上市,成为中国股市第一支“无氟”新军。

长虹华意已形成以景德镇高新区为总部,嘉兴、荆州、郴州、杭州、巴塞罗那、墨西哥、越南在内的三洲、八地、九工厂、六大产业的全球化产业布局,获得国家制造业单项冠军示范企业和国家制造业单项冠军产品等多项荣誉,站在了全球压缩机行业的“C位”。目前,长虹华意拥有“HUAYI”、“JIAXIPERA”、“CUBIGEL”(酷冰)三个压缩机品牌。产品畅销40多个国家和地区,产品出口份额位居行业第一。海尔、海信、美的、惠而浦、博世—西门子、伊莱克斯等众多国内外著名企业都成为公司的核心客户。

面向未来,长虹华意将依托全球化的战略目标,志存高远,锻造一流企业的优秀文化理念,注重社会责任、环境保护、人文关怀。凝练产品核心竞争力,不断研发满足消费者需求的产品,向着“成为全球受尊敬的压缩机企业”砥砺前行!

Changhong Huayi group is a multinational company, mainly engaged in the research and production of various compressors for refrigerators, freezers, water dispensers, ice makers, dehumidifiers and other refrigeration appliances. The company was established in 1990 and successfully went public on the Shenzhen Stock Exchange in 1996, becoming the first "fluorine-free" new force in the Chinese stock market.

Changhong Huayi group has formed a global industrial layout with Jingdezhen High-tech Zone as the headquarters, Jiaxing, Jingzhou, Chenzhou, Hangzhou, Barcelona, Mexico and Vietnam, including three continents, eight places, nine factories and six industries, and has obtained many honors such as National Manufacturing Single Champion Demonstration Enterprise and National Manufacturing Single Champion Product, and is in the lead position of the global compressor industry. At present, Changhong Huayi group has three compressor brands: "HUAYI", "JIAXIPERA" and "CUBIGEL". The products sell well in more than 40 countries and regions, and the export share of the products ranks first in the industry. Haier, Hiron, Meiling, Whirlpool, Bosch-Siemens, Electrolux and many other famous enterprises at home and abroad have become the core customers of the company.

Looking towards the future, Changhong Huayi group will rely on our globalized strategic goals and aim high to forge an excellent cultural philosophy for a first-class enterprise. We place great importance on social responsibility, environmental protection, and humanistic care conducted. The company will focus on the core competitiveness of products, continuously develop products that meet the needs of consumers, and forge ahead toward "becoming a globally respected compressor enterprise"!



 **研发**
Research And Development

 **影响力**
Leadership

 **可靠性**
Reliability

 **尖端技术**
Cutting-edge Technology

 **人才**
Talent

 **创新**
Innovation

产品 Product



● 01.HYB-J 系列



● 02.HYB 系列



● 03.HYJ 系列

- 绿色芯 Green Core
- 高可靠 High Reliability
- 高效率 High Efficiency
- 低噪声 Low Noise
- 应用广 Wide Range Application

Changhong Huayi



● 04.HVM 系列



● 05.HYS 系列



● 06.HYE 系列

压缩机系列 Compressor Series

HYB-J HYB-J 系列



特点:
体积小、重量轻
范围:
2.5-6.0cc
制冷剂:
R600a、R134a
应用器具:
小型冷柜、饮水机

HYB-J series

Characteristic:
Small size and light weight
Range:
2.5-6.0cc
Refrigerant:
R600a、R134a
Application equipment:
Small refrigerators, Water dispensers

HYB 系列

特点:
结构紧凑、重量轻
范围:
6.0-9.6cc
制冷剂:
R600a
应用器具:
冰箱、冷柜、饮水机

HYB series

Characteristic:
Compact structure and light weight
Range:
6.0-9.6cc
Refrigerant:
R600a
Application equipment:
Refrigerator, Freezer, Water dispenser

HYB



HYJ HYJ 系列



特点:
高效、小型化
范围:
4.0-7.0cc
制冷剂:
R600a、R134a
应用器具:
冰箱、冷柜

HYJ series

Characteristic:
Efficient and small
Range:
4.0-7.0cc
Refrigerant:
R600a、R134a
Application Equipment:
Refrigerator, Freezer

HYS 系列

特点:
高效、小型化
范围:
6.0-11.3cc
制冷剂:
R600a、R134a
应用器具:
冰箱、冷柜、展示柜、厨房冰箱

HYS series

Characteristic:
Efficient and miniaturized
Range:
6.0-11.3cc
Refrigerant:
R600a、R134a
Application equipment:
Refrigerator, Freezer, Display cabinet, Kitchen refrigerator

HYS



HYE HYE 系列



特点:
高效
范围:
5.5-13.1cc
制冷剂:
R600a、R134a
应用器具:
厨房冰箱、冷柜、展示柜、啤酒机、饮料柜

HYE series

Characteristic:
Efficient
Range:
5.5-13.1cc
Refrigerant:
R600a、R134a
Application equipment:
Kitchen refrigerator, Freezer, Display cabinet, Beer machine, Beverage cabinet

HVM 系列

特点:
结构紧凑、高效、静音
范围:
4.5-11.0cc
制冷剂:
R600a
应用器具:
冰箱、冷柜、展示柜

HVM series

Characteristic:
Characteristic: Compact structure, Efficient, Low noise
Range:
4.5-11.0cc
Refrigerant:
R600a
Application equipment:
Refrigerator, Freezer, Display cabinet

HVM



先进的产品实验中心

Advanced Products Laboratory Center



为保持压缩机核心科技的领先优势，长虹华意持续投入大量科研资源，引入欧洲成熟的压缩机测试和可靠性试验标准，建立了行业先进的压缩机声学实验室、性能实验室、可靠性寿命实验室、电机性能实验室、应用实验室等专业化实验室，旨在为客户提供可靠的产品和专业的服务。

In order to maintain the leading edge of compressor core technology, Changhong Huayi continues to invest a large amount of scientific research resources, introduce mature European compressor testing and reliability testing standards, and establish industry-leading compressor acoustics laboratories, performance laboratories, reliability life laboratories, electrical performance laboratories, application laboratories, and other specialized laboratories, aiming to provide customers with reliable products and professional services.



压缩机系列主要特征

main characteristics

家用定频产品主要特征 Main features of household constant-speed products						
压缩机系列 Compressor series	气缸容积 (cm ³) Cylinder volume (cm ³)		制冷量 (W) Refrigeration capacity (w)		COP (W/W)	
	min	max	min	max	min	max
HYB-J	2.5	6.0	55	95	1.10	1.55
HYB	6.0	9.6	100	160	1.10	1.65
HYJ	3.0	6.9	80	120	1.15	1.70
HYS	4.5	11.3	95	185	1.25	1.88
HYE	5.0	13.1	95	235	1.25	1.98
HVM	4.5	11.0	28	365	1.50	2.10

认证



Approvals

指令合规声明



Directive compliance declarations

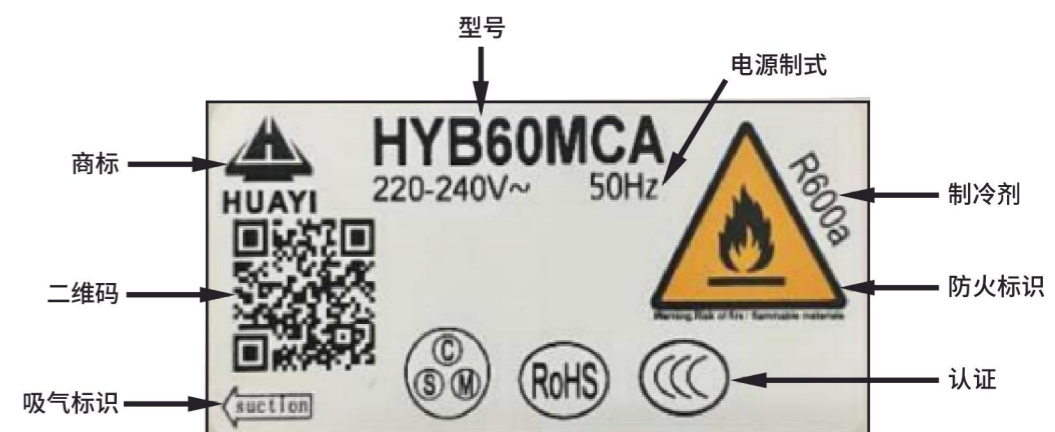
可燃性气体



Flammable gases

铭牌和认证

Identification Labels And Approvals



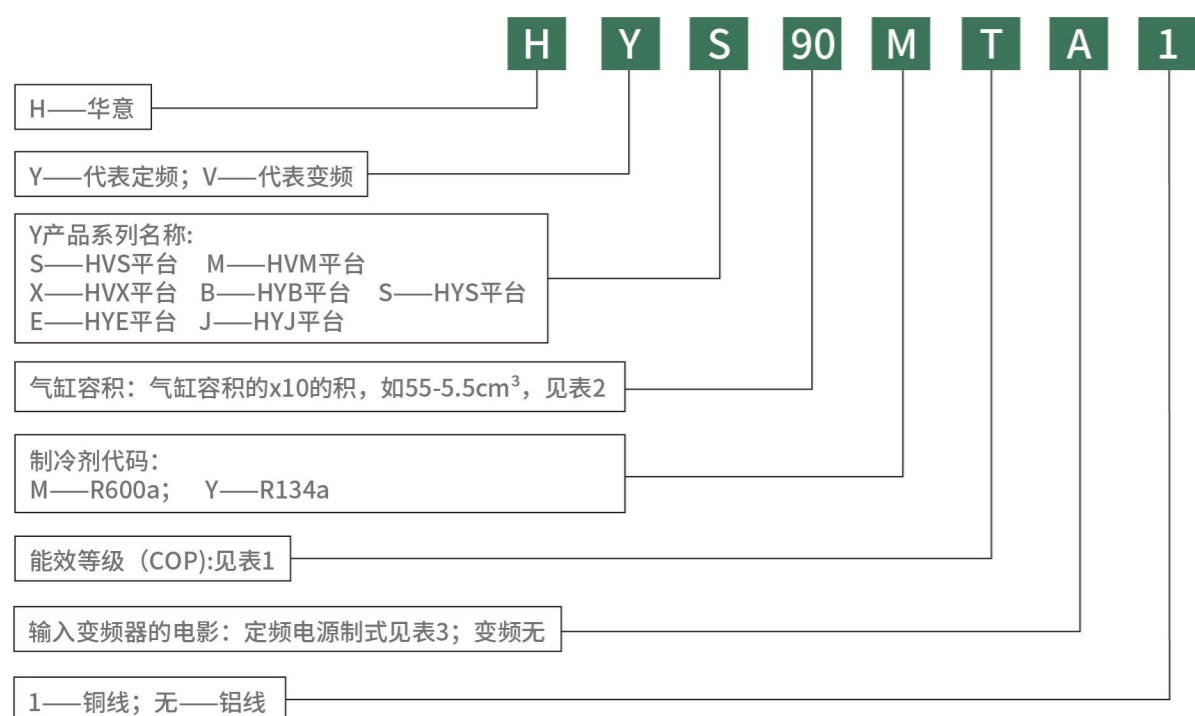
命名规则

Compressor Nomenclature

电压

Voltage

家用定/变频压缩机命名规则



标准的网络电压变化在其额定值的+/- 6%，但Cubigel压缩机®电机的设计是能够在最低-15%和最高+10%的条件下工作。
 The standards consider the voltage variation of the network to be within +/-6% of its rated value, nevertheless the Cubigel Compressors® motors' design is able to work within -15% of the lowest rating and +10% of the highest rating.

序号	标称电源		运行范围		代码	备注
	电压	频率	电压	频率		
1	100V	50/60Hz	94 ~ 106V	50/60Hz	C	
2	115V	60Hz	108~122V	60Hz	E	
3	115V ~ 127V	60Hz	98 ~ 140V	60Hz	R	控制板选用, 兼容50Hz
4	220V ~ 240V	50Hz	187 ~ 254V	50Hz	A	
5	220V ~ 240V	60Hz	187 ~ 254V	60Hz	U	
6	220V ~ 240V	50/60Hz	187 ~ 254V	50/60Hz	G	
7	200 ~ 230V	50/60Hz	200 ~ 220V	50Hz	N	
			200 ~ 230V	60Hz		
8	200 ~ 240V	50Hz	200 ~ 240V	50Hz	L	
			160 ~ 260V	50Hz		
9	160V ~ 260V	50/60Hz	187 ~ 254V	60Hz	K	
			160V ~ 260V	50/60Hz		
10	160V ~ 260V	50/60Hz	160V ~ 260V	50/60Hz	M	控制板选用,最高电压到264V
11	98V ~ 264V	50/60Hz	90~264V/70~140V	50/60Hz	Q	控制板/压缩机
12	+5V ~ 24V				Z	

应用

Applications

根据用途和系统特性，压缩机按不同的应用分类加以区分。
 Based on the characteristics of the system for which the compressor is intended, compressors are classified in different groups of application.

低背压压缩机 LBP

蒸发温度: -35~-10°C [-31°F~+14°F]
 额定工况: -25°C [-13°F](CECOMAF)或-23.3°C [-10°F] (ASHRAE).

Low Back Pressure (LBP) Compressors.

Evaporating temperature range: -35 to -10°C [-31°F to -14°F]
 Rating condition: -25°C [-13°F](CECOMAF) or -23.3°C [-10°F] (ASHRAE).

附表1: 能效等级

COP	效率等级代码
≤1.25	省略
1.30-1.35	C
1.4-1.45	H
1.5-1.55	G
1.60-1.65	K
1.70-1.75	T
1.80-1.85	S
1.9-1.95	X
1.95-2.0	D
2.0-2.05	E
2.05-2.10	F

HMBP

LBP/LMBP

附表2: 气缸容积

压缩机排量	标称排量	压缩机排量	标称排量
2.2	20	6.9	70
2.5	25	7.2	70
3.0	30	8.1	80
3.5	35	8.9	90
4.1	40	9.6	95
4.5	45	9.9	100
5.0	50	10.5	105
5.5	55	11.0	110
5.8	60	11.3	115
6.0	60	12.3	125
6.5	65	13.1	130
6.7	70	14.2	140
		15.3	150

附表3: 电源制式代码

序号	标称电源		运行范围		代码	备注
	电压	频率	电压	频率		
1	100V	50/60Hz	94 ~ 106V	50/60Hz	C	
2	115V	60Hz	108~122V	60Hz	E	
3	115V ~ 127V	60Hz	98 ~ 140V	60Hz	R	控制板选用, 兼容50Hz
4	220V ~ 240V	50Hz	187 ~ 254V	50Hz	A	
5	220V ~ 240V	60Hz	187 ~ 254V	60Hz	U	
6	220V ~ 240V	50/60Hz	187 ~ 254V	50/60Hz	G	
7	200 ~ 230V	50/60Hz	200 ~ 220V	50Hz	N	
			200 ~ 230V	60Hz		
8	200 ~ 240V	50Hz	200 ~ 240V	50Hz	L	
			160 ~ 260V	50Hz		
9	160V ~ 260V	50/60Hz	187 ~ 254V	60Hz	K	
			160V ~ 260V	50/60Hz		
10	160V ~ 260V	50/60Hz	160V ~ 260V	50/60Hz	M	控制板选用,最高电压到264V
11	98V ~ 264V	50/60Hz	90~264V/70~140V	50/60Hz	Q	控制板/压缩机
12	+5V ~ 24V				Z	

ASHRAE测试工况 Test Condition		
测试工况Test Condition	低背压LBP	
	ASHRAE	CECOMAF
蒸发温度(°C) Evaporating	-23.3	-25
冷凝温度(°C) Condensing	54.4	55
环境温度(°C) Ambient temperature	32.2	32
过冷温度(°C) Subcooling	32.2	55
吸气温度(°C) Suction temperature	32.2	32

单位换算 Conversion Table	
Kcal/h × 1.163 = W	
Kcal/h × 3.968 = Btu/h	
W × 3.412 = Btu/h	
W × 0.86 = Kcal/h	
Capacity (at 50Hz) × 1.16 = Capacity (at 60Hz)	
EER = COP × 3.412	

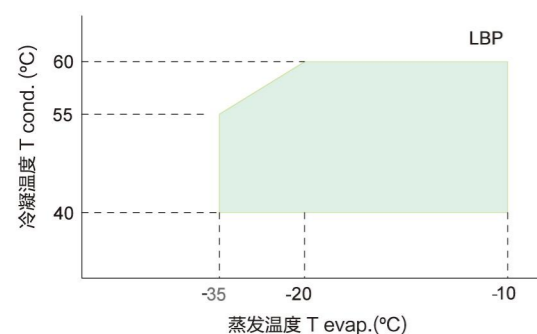
SOA-安全工作区

SOA Safe Operating Area

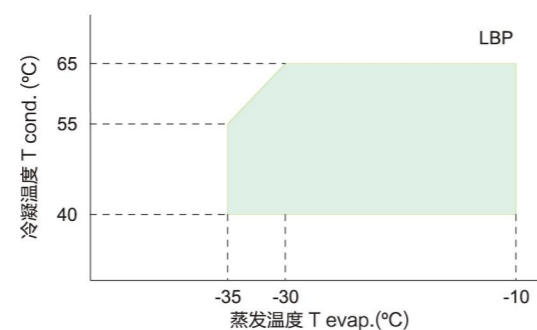
为保证压缩机可靠性, 建议工作条件(蒸发压力和冷凝压力) 位于相应图形阴影区域的范围内。

In order to grant the compressor reliability, it is recommended that the point representing the operating conditions (evaporating and condensing) falls within the shadowed area of the corresponding graph.

SOA R600a LBP



SOA R134a LBP



电机类型

Type Of Electrical Motors



RSIR (单项电阻起动)

LST电机, 无电容。副相起动后断开, 标准能效。

RSCR (单项电容运转)

LST电机, 带运行电容。起动后, 副相保持连接。

RSIR (Resistance Start-Induction Run)

LST motor. No capacitors. Auxiliary winding is disconnected after start up. Standard energy efficiency.

RSCR (Resistance Start-Capacitor Run)

LST motor. With running capacitor. Auxiliary winding remains connected after start up.

TYPE OF ELECTRICAL MOTORS

PART 02

压缩机产品目录

Compressor Product Catalog

02

压缩机产品目录

Compressor Catalogue

变频压缩机 · LBP~R600a									
系列 Series	型号 Model	气缸容积 Displacement (cm ³)	冷却方式 CoolingType	电机类型 MotorType	频率 (转速) Frequency(RotateSpeed) (rpm)	制冷量 CoolingCapacity (W)	COP (WW)	认证 Certification	高度 Height (mm)
HVM	HVM45MKa	4.5	ST	PMSM	40 (1200)	28	1.55	CCC	124
					60 (1800)	45	1.70		
					80 (2400)	56	1.70		
					100 (3000)	70	1.69		
					150 (4500)	105	1.58		
HVM	HVM45MS	4.5	ST	PMSM	40 (1200)	28	1.75	CCC	129
					60 (1800)	45	1.90		
					80 (2400)	56	1.88		
					100 (3000)	70	1.87		
					150 (4500)	105	1.52		
HVM	HVM58MKa	5.8	ST	PMSM	40 (1200)	39	1.50	CCC	124
					60 (1800)	59	1.65		
					80 (2400)	80	1.65		
					100 (3000)	100	1.65		
					150 (4500)	140	1.55		
HVM	HVM58MTa	5.8	ST	PMSM	40 (1200)	39	1.61	CCC	124
					60 (1800)	59	1.75		
					80 (2400)	80	1.75		
					100 (3000)	100	1.73		
					150 (4500)	140	1.65		
HVM	HVM58MSa	5.8	ST	PMSM	40 (1200)	39	1.70	CCC	129
					60 (1800)	59	1.83		
					80 (2400)	80	1.81		
					100 (3000)	100	1.75		
					150 (4500)	140	1.60		
HVM	HVM58MXa	5.8	ST	PMSM	40 (1200)	39	1.75	CCC	129
					60 (1800)	59	1.90		
					80 (2400)	80	1.88		
					100 (3000)	100	1.87		
					150 (4500)	140	1.52		
HVM	HVM70MK	7.0	ST	PMSM	40 (1200)	45	1.50	CCC	124
					60 (1800)	72	1.70		
					80 (2400)	98	1.70		
					100 (3000)	129	1.69		
					150 (4500)	170	1.58		
HVM	HVM70MTa	7.0	ST	PMSM	40 (1200)	45	1.61	CCC/VDE	124
					60 (1800)	72	1.75		
					80 (2400)	98	1.75		
					100 (3000)	129	1.73		
					150 (4500)	170	1.65		
HVM	HVM70MSa	7.0	ST	PMSM	40 (1200)	45	1.72	CCC/VDE	129

变频压缩机 · LBP~R600a									
系列 Series	型号 Model	气缸容积 Displacement (cm ³)	冷却方式 CoolingType	电机类型 MotorType	频率 (转速) Frequency(RotateSpeed) (rpm)	制冷量 CoolingCapacity (W)	COP (WW)	认证 Certification	高度 Height (mm)
HVM	HVM70MSa	7.0	ST	PMSM	60 (1800)	72	1.85	CCC/VDE	129
					80 (2400)	98	1.85		
					100 (3000)	129	1.78		
					150 (4500)	170	1.68		
HVM	HVM70MXa	7.0	ST	PMSM	40 (1200)	45	1.75	CCC/VDE	129
					60 (1800)	72	1.90		
					80 (2400)	98	1.89		
					100 (3000)	129	1.85		
					150 (4500)	170	1.70		
HVM	HVM70MD	7.0	ST	PMSM	40 (1200)	45	1.80	CCC	134
					60 (1800)	72	1.95		
					80 (2400)	98	1.93		
					100 (3000)	129	1.87		
HVM	HVM70ME	7.0	ST	PMSM	40 (1200)	48	1.85	CCC	134
					60 (1800)	80	2.00		
					80 (2400)	98	1.95		
					100 (3000)	130	1.90		
					150 (4500)	180	1.65		
HVM	HVM70MF	7.0	ST	PMSM	40 (1200)	48	1.90	CCC	134
					60 (1800)	80	2.05		
					80 (2400)	98	2.01		
					100 (3000)	130	1.95		
HVM	HVM90MK	9.0	ST	PMSM	40 (1200)	64	1.50	CCC	124
					60 (1800)	98	1.70		
					80 (2400)	131	1.70		
					100 (3000)	168	1.69		
HVM	HVM90MTa	9.0	ST	PMSM	40 (1200)	64	1.63	CCC/VDE	124
					60 (1800)	98	1.75		
					80 (2400)	131	1.75		
					100 (3000)	168	1.72		
					150 (4500)	220	1.62		
HVM	HVM90MSa	9.0	ST	PMSM	40 (1200)	64	1.72	CCC/VDE	129
					60 (1800)	98	1.85		
					80 (2400)	131	1.85		
					100 (3000)	168	1.78		
HVM	HVM90MXa	9.0	ST	PMSM	40 (1200)	64	1.78	CCC/VDE	134
					60 (1800)	98	1.90		

压缩机产品目录

Compressor Catalogue

变频压缩机 · LBP~R600a									
系列 Series	型号 Model	气缸容积 Displacement (cm ³)	冷却方式 CoolingType	电机类型 MotorType	频率 (转速) Frequency(RotateSpeed) (rpm)	制冷量 CoolingCapacity (W)	COP (W/W)	认证 Certification	高度 Height (mm)
HVM	HVM90MXa	9.0	ST	PMSM	40 (1200)	64	1.78	CCC/VDE	134
					100 (3000)	168	1.83		
					150 (4500)	220	1.75		
HVM	HVM90MD	9.0	ST	PMSM	40 (1200)	64	1.80	CCC	134
					60 (1800)	98	1.95		
					80 (2400)	131	1.94		
					100 (3000)	160	1.88		
					150 (4500)	225	1.50		
HVM	HVM90ME	9.0	ST	PMSM	40 (1200)	65	1.85	CCC	134
					60 (1800)	98	2.00		
					80 (2400)	131	1.95		
					100 (3000)	160	1.90		
					150 (4500)	225	1.55		
HVM	HVM90MF	9.0	ST	PMSM	40 (1200)	65	1.90	CCC	134
					60 (1800)	98	2.05		
					80 (2400)	131	2.01		
					100 (3000)	160	1.95		
					150 (4500)	225	1.50		
HVM	HVM90MF1	9.0	ST	PMSM	40 (1200)	65	1.95	CCC	134
					60 (1800)	98	2.10		
					80 (2400)	131	2.00		
					100 (3000)	160	1.95		
					150 (4500)	225	1.50		
HVM	HVM100MK	10.0	ST	PMSM	40 (1200)	69	1.50	CCC	124
					60 (1800)	105	1.70		
					80 (2400)	138	1.70		
					100 (3000)	170	1.68		
					150 (4500)	240	1.58		
HVM	HVM100MT	10.0	ST	PMSM	40 (1200)	69	1.60	CCC	124
					60 (1800)	105	1.75		
					80 (2400)	138	1.75		
					100 (3000)	170	1.71		
					150 (4500)	240	1.60		
HVM	HVM100MS	10.0	ST	PMSM	40 (1200)	69	1.70	CCC/VDE	129
					60 (1800)	105	1.85		
					80 (2400)	138	1.84		
					100 (3000)	170	1.80		
					150 (4500)	240	1.50		
HVM	HVM100MX	10.0	ST	PMSM	40 (1200)	71	1.75	CCC/VDE	129
					60 (1800)	108	1.90		
					80 (2400)	138	1.89		

变频压缩机 · LBP~R600a									
系列 Series	型号 Model	气缸容积 Displacement (cm ³)	冷却方式 CoolingType	电机类型 MotorType	频率 (转速) Frequency(RotateSpeed) (rpm)	制冷量 CoolingCapacity (W)	COP (W/W)	认证 Certification	高度 Height (mm)
HVM	HVM100MX	10.0	ST	PMSM	100 (3000)	170	1.85	CCC/VDE	129
					150 (4500)	240	1.70		
HVM	HVM100MD	10.0	ST	PMSM	40 (1200)	71	1.80	CCC	134
					60 (1800)	108	1.95		
					80 (2400)	140	1.92		
					100 (3000)	170	1.86		
					150 (4500)	240	1.50		
HVM	HVM100ME	10.0	ST	PMSM	40 (1200)	71	1.85	CCC	134
					60 (1800)	108	2.00		
					80 (2400)	140	1.95		
					100 (3000)	170	1.90		
					150 (4500)	240	1.50		
HVM	HVM110MK	11.0	ST	PMSM	40 (1200)	78	1.50	CCC	124
					60 (1800)	118	1.70		
					80 (2400)	155	1.70		
					100 (3000)	192	1.68		
					150 (4500)	270	1.58		
HVM	HVM110MT	11.0	ST	PMSM	40 (1200)	78	1.60	CCC/VDE	124
					60 (1800)	118	1.75		
					80 (2400)	155	1.74		
					100 (3000)	192	1.71		
					150 (4500)	270	1.56		
HVM	HVM110MS	11.0	ST	PMSM	40 (1200)	78	1.70	CCC	129
					60 (1800)	118	1.85		
					80 (2400)	155	1.84		
					100 (3000)	192	1.75		
					150 (4500)	270	1.64		
HVM	HVM110MX	11.0	ST	PMSM	40 (1200)	78	1.75	CCC/VDE	129
					60 (1800)	118	1.90		
					80 (2400)	155	1.88		
					100 (3000)	192	1.85		
					150 (4500)	270	1.65		
HVM	HVM110MD	11.0	ST	PMSM	40 (1200)	78	1.80	CCC/UL	134
					60 (1800)	118	1.95		
					80 (2400)	155	1.93		
					100 (3000)	192	1.88		
					150 (4500)	270	1.55		
HVM	HVM110ME	11.0	ST	PMSM	40 (1200)	78	1.85	CCC/UL	134
					60 (1800)	118	2.00		
					80 (2400)	155	1.95		
					100 (3000)	192	1.90		

压缩机产品目录

Compressor Catalogue

变频压缩机 · LBP~R600a

系列 Series	型号 Model	气缸容积 Displacement (cm ³)	冷却方式 Cooling Type	电机类型 Motor Type	频率 (转速) Frequency (Rotational Speed) (rpm)	制冷量 Cooling Capacity (W)	COP (W/W)	认证 Certification	高度 Height (mm)
VU	HVU130MX*	13.0	ST	PMSM	40 (1200)	92	1.85	CCC	178
					60 (1800)	138	1.95		
					80 (2400)	180	1.87		
					100 (3000)	230	1.85		
VU	HVU150MX*	15.0	ST	PMSM	150 (4500)	310	1.50	CCC	178
					40 (1200)	105	1.78		
					60 (1800)	162	1.90		
					80 (2400)	215	1.85		
					100 (3000)	260	1.83		
					150 (4500)	365	1.50		



R600a · 100V~50Hz/60Hz

型号 Model	气缸容积 Displacement (cm ³)	冷却方式 Cooling	电机类型 Motor Type	ASHRAE(-23.3°C)			CECOMAF(-25°C)			认证 Certification	高度 Height (mm)
				制冷量 Cooling Capacity (W)		COP (W/W)	制冷量 Cooling Capacity (W)		COP (W/W)		
				W	kcal/h	W/W	W	kcal/h	W/W		
HYJ35MGC*	3.5	ST	RSCR	55	47	1.50	41	35	1.17	/	152
				65	56	1.55	48	42	1.21		
HYJ50MHC	5	ST	RSIR	80	69	1.40	60	51	1.09	/	152
				95	82	1.45	71	61	1.13		
HYJ69MGC*	6.9	ST	RSCR	120	103	1.50	89	77	1.17	/	158
				138	119	1.55	103	89	1.21		
HYS67MKC	6.7	ST	RSCR	115	99	1.60	86	74	1.25	/	167.5
				136	117	1.65	101	88	1.29		
HYS81MKC	8.1	ST	RSCR	140	120	1.60	104	90	1.25	/	167.5
				162	139	1.65	121	104	1.29		
HYS105MGC	10.5	ST	RSCR	185	159	1.50	138	119	1.17	/	174
				210	181	1.60	156	135	1.25		

R600a · 115V~60HZ

型号 Model	气缸容积 Displacement (cm ³)	冷却方式 Cooling	电机类型 Motor Type	ASHRAE(-23.3°C)			CECOMAF(-25°C)			认证 Certification	高度 Height (mm)
				制冷量 Cooling Capacity (W)		COP (W/W)	制冷量 Cooling Capacity (W)		COP (W/W)		
				W	kcal/h	W/W	W	kcal/h	W/W		
HYE60MSU42	6.7	ST	RSCR	135	117	1.83	101	87	1.43	UL	173.5
HYE81MSU42	8.1	ST	RSCR	170	147	1.8	127	109	1.40	UL	173.5
HYB35MJ42a	3.5	ST	RSIR	65	56	1.15	48	42	0.90	UL	126
HYB35MHJ42a	3.5	ST	RSIR	65	56	1.32	48	42	1.03	UL	130
HYB40MHJ42a	4.0	ST	RSIR	76	66	1.35	57	49	1.05	UL	142
HYB60MHU42	6.0	ST	RSIR	120	103	1.40	89	77	1.09	UL	154
				120	103	1.40	89	77	1.09		
HYB60MHU42a	6.0	ST	RSIR	120	103	1.50	89	77	1.17	UL	154
HYS69MKU42a	6.9	ST	RSCR	145	125	1.65	108	93	1.29	UL	167.5

压缩机产品目录

Compressor Catalogue

R600a · 115-127V~60HZ											
型号 Model	气缸容积 Displacement (cm ³)	冷却方式 Cooling	电机类型 Motor Type	ASHRAE(-23.3°C)			CECOMAF(-25°C)			认证 Certification	高度 Height (mm)
				制冷量 Cooling Capacity (W)		COP (W/W)	制冷量 Cooling Capacity (W)		COP (W/W)		
				W	kcal/h	W/W	W	kcal/h	W/W		
HYJ50MGR	5.0	ST	RSIR	95	82	1.50	71	61	1.17	UL	152
HYJ50MKR	5.0	ST	RSCR	95	82	1.60	71	61	1.25	UL	158
HYJ50MTR*	5.0	ST	RSCR	95	82	1.70	71	61	1.33	/	158
HYJ60MHR	6.0	ST	RSIR	120	103	1.40	89	77	1.09	UL	152
HYJ60MGR	6.0	ST	RSIR	120	103	1.50	89	77	1.17	UL	152
HYJ60MKR	6.0	ST	RSCR	120	103	1.60	89	77	1.25	UL	158
HYS60MXR*	6.0	ST	RSCR	120	104	1.90	89	77	1.48	/	174
HYB30MHR*	3.0	ST	RSIR	55	48	1.35	41	35	1.05	UL	138
HYB40MGR	4.0	ST	RSCR	75	65	1.50	55	47	1.16	UL	142
HYB50MHJ72a	5.0	ST	RSIR	95	82	1.42	71	61	1.11	UL	142
HYB50MGU72a	5.0	ST	RSCR	96	83	1.58	72	62	1.23	UL	161
HYB60MGU72a	6.0	ST	RSCR	120	103	1.58	89	77	1.23	UL	161
HYB60MKU72a	6.0	ST	RSCR	120	103	1.65	89	77	1.29	UL	161
HYS55MSR	5.0	ST	RSCR	110	95	1.80	82	71	1.40	UL	174
HYS60MSR	6.0	ST	RSCR	120	103	1.80	89	77	1.40	UL	174
HYS67MGU72a	6.7	ST	RSCR	136	118	1.55	101	88	1.21	UL	165
HYS81MKR	8.1	ST	RSCR	160	138	1.65	119	103	1.29	UL	165
HYS90MTR	9.0	ST	RSCR	175	150	1.75	130	113	1.37	UL	174
HYS96MTU72a	9.6	ST	RSCR	190	164	1.70	142	122	1.33	UL	167.5
HYS105MTR	10.5	ST	RSCR	210	181	1.72	156	135	1.34	UL	174
HYE81MSU72a	8.1	ST	RSCR	170	147	1.80	127	109	1.40	UL	173.5
HYE90MGU72	8.9	ST	RSCR	175	151	1.47	130	113	1.15	UL	173.5
HYE90MTU72	8.9	ST	RSCR	175	151	1.72	130	113	1.34	UL	173.5
HYE90MSU72a	9.0	ST	RSCR	185	160	1.80	138	119	1.40	UL	173.5
	9.0	ST	RSCR	185	160	1.70	138	119	1.33	UL	173.5
HYE90MXR*	8.9	ST	RSCR	185	160	1.90	138	119	1.48	/	173.5
HYE96MXR*	9.6	ST	RSCR	195	168	1.90	145	126	1.48	/	173.5
HYE105MGU72a	10.5	ST	RSCR	210	181	1.50	156	135	1.17	UL	173.5
HYE105MKU72a	10.5	ST	RSCR	210	181	1.60	156	135	1.25	UL	173.5
HYE105MTU72a	10.5	ST	RSCR	210	181	1.70	156	135	1.33	UL	173.5

R600a · 160-260V~50HZ											
型号 Model	气缸容积 Displacement (cm ³)	冷却方式 Cooling	电机类型 Motor Type	ASHRAE(-23.3°C)			CECOMAF(-25°C)			认证 Certification	高度 Height (mm)
				制冷量 Cooling Capacity (W)		COP (W/W)	制冷量 Cooling Capacity (W)		COP (W/W)		
				W	kcal/h	W/W	W	kcal/h	W/W		
HYJ50MCK	5.0	ST	RSIR	80	69	1.35	58	51	1.04	CCC,VDE	152
HYJ50MHK	5.0	ST	RSIR	80	69	1.40	58	51	1.08	CCC,VDE	158
HYJ50MKK	5.0	ST	RSCR	80	69	1.60	58	51	1.23	CCC,VDE	158
HYJ60MCK	6.0	ST	RSIR	100	86	1.35	73	63	1.04	CCC,VDE	158
HYJ60MHK	6.0	ST	RSCR	100	86	1.40	73	63	1.08	CCC,VDE	158
HYJ65MKK	6.5	ST	RSCR	108	93	1.65	79	68	1.27	CCC,VDE	158
HYJ69MCK	6.9	ST	RSIR	120	104	1.35	88	76	1.04	CCC,VDE	158
HYJ69MHK	6.9	ST	RSIR	120	104	1.45	88	76	1.12	CCC	158
HYB60MHU81a	6.0	ST	RSIR	100	86	1.30	76	64	1.01	CCC	154
HYB65MKUa	6.5	ST	RSCR	108	93	1.65	80	70	1.29	CCC, CB	161
HYB69MHU81a	6.9	ST	RSIR	118	101	1.30	88	76	1.01	CCC	154
HYB81MHU81a	8.1	ST	RSIR	135	116	1.35	101	87	1.05	CCC	161
HYB96MHUa	9.6	ST	RSIR	165	142	1.30	123	106	1.01	CCC, VDE	161
			RSCR	165	142	1.35	123	106	1.05	CCC, VDE	161
HYS69MSUa	6.9	ST	RSCR	115	99	1.83	86	74	1.43	CCC,VDE	165
HYS72MKUa	7.2	ST	RSCR	125	108	1.60	93	80	1.25	CCC	165
HYS72MSUa	7.2	ST	RSCR	125	108	1.80	93	80	1.40	CCC	167.5
HYS81MKK	8.1	ST	RSCR	138	119	1.65	103	89	1.29	CCC	167.5
HYS90MKUa	9.0	ST	RSCR	155	134	1.60	115	100	1.25	CCC,VDE	167.5
HYS96MKUa	9.6	ST	RSCR	168	145	1.60	125	108	1.25	CCC	167.5
HYS96MKK	9.6	ST	RSCR	168	145	1.65	123	106	1.27	CCC,VDE	168
HYS96MTK	9.6	ST	RSCR	168	145	1.65	122	106	1.27	CCC	168
HYS96MSK	9.6	ST	RSCR	168	145	1.80	122	106	1.39	CCC	168
HYS96MSUa	9.6	ST	RSCR	168	145	1.80	125	108	1.40	CCC	167.5
HYS105MHK*	10.5	ST	RSCR	185	160	1.45	135	117	1.12	/	168
HYS105MGK	10.5	ST	RSCR	185	160	1.55	135	117	1.19	CCC	168
HYS105MKK	10.5	ST	RSCR	185	160	1.65	135	117	1.27	CCC	168
HYS113MHK	11.3	ST	RSCR	195	169	1.45	142	123	1.12	CCC	172

压缩机产品目录

Compressor Catalogue

R600a · 160-260V~50Hz/60Hz											
型号Model	气缸容积 Displacement (cm ³)	冷却方式 Cooling	电机类型 Motor Type	ASHRAE(-23.3°C)			CECOMAF(-25°C)			认证 Certificatio n	高度 Height (mm)
				制冷量 Cooling Capacity (W)		COP (W/W)	制冷量 Cooling Capacity (W)		COP (W/W)		
				W	kcal/h	W/W	W	kcal/h	W/W		
HYB40MJ83a	4.0	ST	RSIR	65	56	1.15	48	42	0.90	CCC,CB	144
				80	69	1.35	60	51	1.05		
HYB50MJ83a	5.0	ST	RSIR	80	69	1.15	60	51	0.90	CCC,CB	144
				95	82	1.35	71	61	1.05		

R600a · 220-240V~50HZ											
型号Model	气缸容积 Displacement (cm ³)	冷却方式 Cooling	电机类型 Motor Type	ASHRAE(-23.3°C)			CECOMAF(-25°C)			认证 Certificatio n	高度 Height (mm)
				制冷量 Cooling Capacity (W)		COP (W/W)	制冷量 Cooling Capacity (W)		COP (W/W)		
				W	kcal/h	W/W	W	kcal/h	W/W		
HYJ35MGA*	3.5	ST	RSCR	55	47	1.55	41	35	1.21	CCC、 VDE	158
HYJ50MGA	5.0	ST	RSIR	80	69	1.55	60	51	1.21	CCC、 VDE	152
HYJ50MKA	5.0	ST	RSCR	80	69	1.62	60	51	1.26	CCC、 VDE	158
HYJ50MTA*	5.0	ST	RSCR	80	69	1.70	60	51	1.33	/	158
HYJ60MA	5.0	ST	RSIR	95	82	1.20	71	61	0.94	CCC	145
HYJ60MCA	5.0	ST	RSIR	100	86	1.35	75	64	1.05	CCC、 VDE	152
HYJ60MHA	6.0	ST	RSIR	100	86	1.45	75	64	1.13	CCC、 VDE	152
HYJ60MGA	6.0	ST	RSCR	100	86	1.55	75	64	1.21	CCC、 VDE	152
HYJ60MKA	6.0	ST	RSCR	100	86	1.60	75	64	1.25	CCC、 VDE	158
	6.0	ST		100	86	1.65	75	64	1.29	CCC、 VDE	160
HYJ60MTA*	6.0	ST	RSCR	100	86	1.70	75	64	1.33	/	152
HYJ69MA	6.9	ST	RSIR	115	99	1.15	86	74	0.90	CCC	145
HYJ69MCA	6.9	ST	RSIR	120	103	1.35	89	77	1.05	CCC、 VDE	152
HYJ69MHA	6.9	ST	RSIR	120	103	1.45	89	77	1.13	CCC、 VDE	152
HYJ69MGA	6.9	ST	RSCR	120	103	1.55	89	77	1.21	CCC、 VDE	158
HYJ69MKA	6.9	ST	RSCR	120	103	1.65	89	77	1.29	CCC、 VDE	158
HYJ69MTA*	6.9	ST	RSCR	120	103	1.70	89	77	1.33	/	158
HYB35MJa	3.5	ST	RSIR	55	48	1.15	41	35	0.90	CCC,VDE	130
HYB35MJ63a	3.5	ST	RSIR	55	48	1.15	41	35	0.90	CCC,VDE	130
HYB35MGJa	3.5	ST	RSCR	55	48	1.52	41	35	1.19	CCC,VDE	142

R600a · 220-240V~50HZ											
型号Model	气缸容积 Displacement (cm ³)	冷却方式 Cooling	电机类型 Motor Type	ASHRAE(-23.3°C)			CECOMAF(-25°C)			认证 Certificatio n	高度 Height (mm)
				制冷量 Cooling Capacity (W)		COP (W/W)	制冷量 Cooling Capacity (W)		COP (W/W)		
				W	kcal/h	W/W	W	kcal/h	W/W		
HYB35MHJa	3.5	ST	RSIR	55	48	1.25	41	35	0.98	CCC,VDE	130
				55	48	1.35	41	35	1.05	CCC,VDE	138
				55	48	1.40	41	35	1.09	CCC,VDE	142
HYB40MJa	4.0	ST	RSIR	65	56	1.15	48	42	0.90	CCC,VDE	138
HYB40MHJa	4.0	ST	RSIR	65	56	1.33	48	42	1.04	CCC,VDE	142
HYB50MJa	5.0	ST	RSIR	75	65	1.10	56	48	0.86	CCC,VDE	138
HYB50MHJa	5.0	ST	RSIR	75	65	1.30	56	48	1.01	CCC,VDE	142
HYB50MGJa	5.0	ST	RSIR	82	71	1.40	61	53	1.09	CCC,VDE	142
			RSCR	82	71	1.53	61	53	1.19	CCC,VDE	142
HYB60MCA*	6.0	ST	RSIR	95	82	1.25	71	61	0.98	CCC	138
HYB60MHU	6.0	ST	RSIR	100	56	1.10	75	64	0.86	CCC,VDE	145
						1.28			1.00	CCC	145
						1.35			1.05	CCC,VDE	154
						1.45			1.13	CCC,VDE	154
HYB69MHUa	6.9	ST	RSIR	118	101	1.20	88	76	0.94	CCC	145
						1.43			1.12	CCC,VDE	154
HYB81MHUa	8.1	ST	RSIR	135	116	1.35	101	86	1.05	CCC,VDE	154
						1.45			1.13		154
HYB81MGUa	8.1	ST	RSCR	135	116	1.55	101	87	1.21	CCC	161
HYB81MKUa	8.1	ST	RSCR	135	116	1.65	101	87	1.29	CCC,VDE	161
HYB90MHUa	9.0	ST	RSIR	148	127	1.35	110	95	1.05	CCC,VDE	154
						1.45			1.13		161
HYB90MHU63	9.0	ST	RSIR	148	128	1.40	110	95	1.09	CCC,CB	161
HYB90MKUa	9.0	ST	RSCR	148	127	1.65	110	95	1.29	CCC	161
HYB96MHUa	9.6	ST	RSIR	160	138	1.30	119	103	1.01	CCC	154
HYB96MGA	9.6	ST	RSCR	160	138	1.55	119	103	1.21	CCC	161
HYS55MSUa	5.5	ST	RSCR	93	80	1.80	69	60	1.40	CCC,VDE	165
HYS55MXU	5.5	ST	RSCR	95	82	1.88	71	61	1.47	CCC,VDE	165
HYS60MTU	6.0	ST	RSCR	100	86	1.74	75	64	1.36	CCC,VDE	165
HYS60MSUa	6.0	ST	RSCR	100	86	1.83	75	64	1.43	CCC,VDE	165
HYS60MXUa	6.0	ST	RSCR	102	88	1.88	76	66	1.47	CCC,VDE	167.5
HYS60MDU	6.0	ST	RSCR	102	88	1.92	76	66	1.50	CCC	165

压缩机产品目录

Compressor Catalogue

R600a · 220-240V~50HZ											
型号 Model	气缸容积 Displacement (cm ³)	冷却方式 Cooling	电机类型 Motor Type	ASHRAE(-23.3°C)			CECOMAF(-25°C)			认证 Certification	高度 Height (mm)
				制冷量 Cooling Capacity (W)		COP (W/W)	制冷量 Cooling Capacity (W)		COP (W/W)		
				W	kcal/h	W/W	W	kcal/h	W/W		
HYS65MXUa	6.5	ST	RSCR	110	95	1.88	82	71	1.47	CCC	167.5
HYS69MTU	6.9	ST	RSCR	120	104	1.72	89	77	1.34	CCC	165
HYS69MSU	6.9	ST	RSCR	120	104	1.83	89	77	1.43	CCC,VDE	165
HYS69MSUa	6.9	ST	RSCR	120	104	1.83	89	77	1.43	CCC,VDE	165
HYS69MXUa	6.9	ST	RSCR	122	105	1.88	91	79	1.47	CCC,VDE	167.5
HYS69MDU	6.9	ST	RSCR	122	105	1.92	91	79	1.50	CCC	165
HYS81MTUa	8.1	ST	RSCR	138	119	1.72	103	89	1.34	CCC,VDE	165
HYS81MSUa	8.1	ST	RSCR	138	119	1.80	103	89	1.40	CCC,VDE	167.5
HYS81MXUa	8.1	ST	RSCR	138	119	1.86	103	89	1.45	CCC,VDE	167.5
HYS90MTUa	9.0	ST	RSCR	150	130	1.70	112	97	1.33	CCC,VDE	167.5
HYS96MTUa	9.6	ST	RSCR	168	145	1.70	125	108	1.33	CCC	167.5
HYS96MTA	9.6	ST	RSCR	168	144	1.75	125	108	1.37	CCC	168
HYS96MSUa	9.6	ST	RSCR	168	145	1.80	125	108	1.40	CCC	167.5
HYS105MCA	10.5	ST	RSIR	180	156	1.30	134	116	1.01	CCC	160
HYS105MTA	10.5	ST	RSIR	185	159	1.75	138	119	1.37	CCC	172
HYS105MSA	10.5	ST	RSCR	185	159	1.85	138	119	1.44	CCC	174
HYS113MCA	11.3	ST	RSIR	190	164	1.30	142	122	1.01	CCC	165
HYS113MKA	11.3	ST	RSCR	190	164	1.65	142	122	1.29	CCC	167.5
HYS113MSA	11.3	ST	RSCR	196	169	1.80	146	126	1.40	CCC	174
HYS125MCA	12.5	ST	RSIR	210	181	1.35	156	135	1.05	CCC	168
HYS125MKA*	12.5	ST	RSCR	210	181	1.65	156	135	1.29	/	172
HYS125MTA*	12.5	ST	RSCR	210	181	1.75	156	135	1.37	/	172
HYS125MSA*	12.5	ST	RSCR	210	181	1.80	156	135	1.40	/	174
HYE50MDU	5.5	ST	RSCR	96	83	1.98	72	62	1.54	CCC,VDE	173.5
HYE55MDU	6.0	ST	RSCR	107	92	1.98	80	69	1.54	CCC,VDE	173.5
HYE60MDU	6.7	ST	RSCR	118	102	1.96	88	76	1.53	CCC,VDE	173.5
HYE69MDU	7.2	ST	RSCR	128	111	1.95	95	82	1.52	CCC,VDE	173.5
HYE81MDU	8.1	ST	RSCR	145	125	1.98	108	93	1.54	CCC,VDE	173.5
HYE90MXU63	8.9	ST	RSCR	155	134	1.84	115	100	1.44	CCC,VDE	173.5
HYE90MDU63	8.9	ST	RSCR	155	134	1.90	115	100	1.48	CCC,VDE	176
HYE90MDU	8.9	ST	RSCR	154	133	1.98	115	99	1.54	CCC,VDE	173.5

R600a · 220-240V~50HZ											
型号 Model	气缸容积 Displacement (cm ³)	冷却方式 Cooling	电机类型 Motor Type	ASHRAE(-23.3°C)			CECOMAF(-25°C)			认证 Certification	高度 Height (mm)
				制冷量 Cooling Capacity (W)		COP (W/W)	制冷量 Cooling Capacity (W)		COP (W/W)		
				W	kcal/h	W/W	W	kcal/h	W/W		
HYE96MDU	9.6	ST	RSCR	173	149	1.96	129	111	1.53	CCC,VDE	173.5
HYE105MXU	10.5	ST	RSCR	185	160	1.90	138	119	1.48	CCC,VDE	176
HYE113MTUa	11.3	ST	RSCR	198	171	1.74	148	127	1.36	CCC	173.5
HYE113MXU	11.3	ST	RSCR	195	168	1.90	145	126	1.48	CCC	176
HYE125MHU63	12.3	ST	RSCR	210	181	1.25	156	135	0.98	CCC	176
HYE125MKUa	12.3	ST	RSCR	218	188	1.65	162	140	1.29	CCC	173.5
HYE125MSUa	12.3	ST	RSCR	218	188	1.80	162	140	1.40	CCC,VDE	173.5
HYE125MSU	12.3	ST	RSCR	218	188	1.85	162	140	1.44	CCC,VDE	173.5
HYE125MXU	12.3	ST	RSCR	215	186	1.89	160	138	1.47	CCC,VDE	176
HYE131MKUa	13.1	ST	RSCR	235	203	1.63	175	151	1.27	CCC,VDE	176
HYE131MTU	13.1	ST	RSCR	235	203	1.78	175	151	1.39	CCC,VDE	176
HYE131MSU	13.1	ST	RSCR	235	203	1.85	175	151	1.44	CCC	176

R600a · 220-240V~60HZ											
型号 Model	气缸容积 Displacement (cm ³)	冷却方式 Cooling	电机类型 Motor Type	ASHRAE(-23.3°C)			CECOMAF(-25°C)			认证 Certification	高度 Height (mm)
				制冷量 Cooling Capacity (W)		COP (W/W)	制冷量 Cooling Capacity (W)		COP (W/W)		
				W	kcal/h	W/W	W	kcal/h	W/W		
HYB35MJ63a	3.5	ST	RSIR	65	56	1.25	48	42	0.98	CCC, VDE	130
HYS60MSU72a	6.0	ST	RSCR	120	104	1.80	89	77	1.40	CCC	167.5
HYS67MGU62	6.7	ST	RSCR	136	118	1.55	101	88	1.21	CCC, CB	158
HYS67MKU62	6.7	ST	RSCR	136	118	1.65	101	88	1.29	CCC, CB	165
HYS67MKU62a	6.7	ST	RSCR	136	118	1.65	101	88	1.29	CCC, VDE	165
HYS81MKU62a	8.1	ST	RSCR	160	138	1.65	119	103	1.29	CCC, VDE	165
HYE81MTU62	8.1	ST	RSCR	165	143	1.78	119	103	1.39	CCC,VDE	173.5
HYB90MHU63	9.0	ST	RSIR	180	156	1.55	134	116	1.21	CCC, CB	161
HYE90MXU63	8.9	ST	RSCR	175	151	1.88	130	113	1.47	CCC,VDE	173.5
HYE90MDU63	8.9	ST	RSCR	185	160	1.92	138	119	1.50	CCC,VDE	176
HYE113MSU62	11.3	ST	RSCR	228	197	1.80	170	147	1.40	CCC,VDE	176
HYE125MHU63	12.3	ST	RSCR	245	212	1.35	183	158	1.05	CCC	176

压缩机产品目录

Compressor Catalogue

R134a · 115V~60HZ											
型号 Model	气缸容积 Displacement (cm ³)	冷却方式 Cooling	电机类型 Motor Type	ASHRAE(-23.3°C)			CECOMAF(-25°C)			认证 Certification	高度 Height (mm)
				制冷量 Cooling Capacity (W)		COP (W/W)	制冷量 Cooling Capacity (W)		COP (W/W)		
				W	kcal/h	W/W	W	kcal/h	W/W		
HYS45YT42	4.5	ST	RSCR	152	131	1.57	113	98	1.22	UL	165

R134a · 115-127V~60HZ											
型号 Model	气缸容积 Displacement (cm ³)	冷却方式 Cooling	电机类型 Motor Type	ASHRAE(-23.3°C)			CECOMAF(-25°C)			认证 Certification	高度 Height (mm)
				制冷量 Cooling Capacity (W)		COP (W/W)	制冷量 Cooling Capacity (W)		COP (W/W)		
				W	kcal/h	W/W	W	kcal/h	W/W		
HYE60YD72	6.0	ST	RSCR	220	190	1.80	164	142	1.40	UL	176
HYE72YD72	6.7	ST	RSCR	245	212	1.80	183	158	1.40	UL	176
HYB30YJ72a	3.0	ST	RSIR	90	78	1.05	66	57	0.81	UL	142
HYB30YHJ72a	3.0	ST	RSIR	100	86	1.30	73	63	1.00	UL	144
HYB41Y72a	4.1	ST	RSIR	130	112	1.30	95	82	1.00	UL	161

R134a · 160-260V~50Hz											
型号 Model	气缸容积 Displacement (cm ³)	冷却方式 Cooling	电机类型 Motor Type	ASHRAE(-23.3°C)			CECOMAF(-25°C)			认证 Certification	高度 Height (mm)
				制冷量 Cooling Capacity (W)		COP (W/W)	制冷量 Cooling Capacity (W)		COP (W/W)		
				W	kcal/h	W/W	W	kcal/h	W/W		
HYB22YJ81a	2.2	ST	RSIR	55	47	1.05	40	35	0.81	CCC	138
HYB35YCK	3.5	ST	RSIR	95	82	1.15	69	60	0.89	CCC	144
HYB41Y81a	4.1	ST	RSIR	110	95	1.15	80	69	0.89	CCC,VDE	161
HYB41YH81a	4.1	ST	RSIR	110	95	1.25	80	69	0.96	CCC,CB	161
HYS45YH81a	4.5	ST	RSIR	125	108	1.30	91	79	1.00	CCC,VDE	167.5
HYS60YCK	6.0	ST	RSIR	175	150	1.35	128	110	1.04	CCC	172
HYS69YCK	6.9	ST	RSIR	195	168	1.35	142	123	1.04	CCC	172
HYE81YHK	8.1	ST	RSCR	235	203	1.40	175	151	1.09	CCC	173.5
HYE90YKA	9.0	ST	RSCR	265	229	1.40	197	171	1.09	CCC	173.5

R134a · 160-260V~50Hz/60Hz											
型号 Model	气缸容积 Displacement (cm ³)	冷却方式 Cooling	电机类型 Motor Type	ASHRAE(-23.3°C)			CECOMAF(-25°C)			认证 Certification	高度 Height (mm)
				制冷量 Cooling Capacity (W)		COP (W/W)	制冷量 Cooling Capacity (W)		COP (W/W)		
				W	kcal/h	W/W	W	kcal/h	W/W		
HYB25YJ83a	2.5	ST	RSIR	76	66	1.05	55	48	0.81	CCC,CB	142
				65	56	0.95	47	41	0.73		
HYB30YJ83a	3.0	ST	RSIR	90	78	1.25	66	57	0.96	CCC,CB	142
				78	67	1.15	57	49	0.89		

R134a · 220-240V~50HZ											
型号 Model	气缸容积 Displacement (cm ³)	冷却方式 Cooling	电机类型 Motor Type	ASHRAE(-23.3°C)			CECOMAF(-25°C)			认证 Certification	高度 Height (mm)
				制冷量 Cooling Capacity (W)		COP (W/W)	制冷量 Cooling Capacity (W)		COP (W/W)		
				W	kcal/h	W/W	W	kcal/h	W/W		
HYJ30YCM	3.0	ST	RSIR	80	69	1.20	58	50	0.92	CCC	152
				100	86	1.30	73	63	1.00		152
HYJ40YCA	4.0	ST	RSIR	110	95	1.25	80	69	0.96	CCC	152
HYJ45YCA	4.5	ST	RSIR	125	107	1.30	91	79	1.00	CCC	158
HYB30YJa	3.0	ST	RSIR	78	67	1.15	57	49	0.89	CCC,VDE	142
HYS45Ya	4.5	ST	RSIR	125	108	1.2	91	79	0.92	CCC, VDE	158
HYS45Y	4.5	ST	RSIR	125	108	1.3	91	79	1.00	CCC, CB, VDE	158
HYS55YCA	5.5	ST	RSIR	155	133	1.35	113	98	1.04	CCC, VDE	160
HYS55YT	5.5	ST	RSCR	160	138	1.65	117	101	1.27	CCC, VDE	167.5
HYS60YT	6.0	ST	RSCR	173	149	1.65	126	109	1.27	CCC, VDE	167.5
HYS60YCA	6.0	ST	RSIR	175	150	1.35	128	110	1.04	CCC, VDE	165
HYS69YG	6.9	ST	RSCR	190	164	1.43	139	120	1.10	CCC, VDE	167.5
HYS69YCA	6.9	ST	RSIR	195	168	1.35	142	123	1.04	CCC, VDE	167.5
HYS69YK	6.9	ST	RSCR	190	164	1.52	139	120	1.17	CCC, VDE	167.5
HYS69YGA	6.9	ST	RSCR	195	168	1.52	142	123	1.17	CCC	172
HYE45YT	4.5	ST	RSCR	125	108	1.60	93	80	1.25	CCC	173.5
HYE55YT	5.5	ST	RSCR	160	138	1.65	119	103	1.29	CCC	173.5
HYE60YHa	6.0	ST	RSIR	180	156	1.36	134	116	1.06	CCC	167
HYE60YG	6.0	ST	RSCR	170	147	1.43	127	109	1.12	CCC,VDE	173.5
HYE60YK	6.0	ST	RSCR	175	151	1.52	130	113	1.19	CCC,VDE	173.5

压缩机产品目录

Compressor Catalogue

R134a · 220-240V~50HZ											
型号 Model	气缸容积 Displacement (cm ³)	冷却方式 Cooling	电机类型 Motor Type	ASHRAE(-23.3°C)			CECOMAF(-25°C)			认证 Certification	高度 Height (mm)
				制冷量 Cooling Capacity (W)		COP (W/W)	制冷量 Cooling Capacity (W)		COP (W/W)		
				W	kcal/h	W/W	W	kcal/h	W/W		
HYE60YKL	6.0	ST	RSCR	175	151	1.52	130	113	1.19	CCC,VDE	173.5
HYE60YTa	6.0	ST	RSCR	185	160	1.65	138	119	1.29	CCC,VDE	176
HYE60YS	6.0	ST	RSCR	180	156	1.70	134	116	1.33	CCC,VDE	173.5
HYE60YX	6.0	ST	RSCR	185	160	1.75	138	119	1.37	CCC,VDE	173.5
HYE60YD	6.0	ST	RSCR	180	156	1.80	134	116	1.40	CCC,VDE	176
HYE69YG	6.7	ST	RSCR	190	164	1.43	142	122	1.12	CCC,VDE	173.5
HYE69YK	6.7	ST	RSCR	195	168	1.52	145	126	1.19	CCC,VDE	173.5
HYE69YKa	6.0	ST	RSCR	195	168	1.52	145	126	1.19	CCC,VDE	173.5
HYE69YTa	6.7	ST	RSCR	200	173	1.65	149	129	1.29	CCC,VDE	176
HYE69YS	6.7	ST	RSCR	200	173	1.70	149	129	1.33	CCC,VDE	173.5
HYE69YSa	6.7	ST	RSCR	200	173	1.70	149	129	1.33	VDE	173.5
HYE69YX	6.7	ST	RSCR	200	173	1.75	149	129	1.37	CCC	176
HYE69YD	6.7	ST	RSCR	200	173	1.80	149	129	1.40	CCC	176
HYE81Ya	8.1	ST	RSIR	235	203	1.25	175	151	0.98	CCC/VDE	173.5
HYE81Y	8.1	ST	RSIR	235	203	1.30	175	151	1.01	CCC/VDE	173.5
HYE81YTa	8.1	ST	RSCR	235	203	1.63	175	151	1.27	CCC/VDE	173.5
HYE81YT	8.1	ST	RSCR	235	203	1.65	175	151	1.29	CCC/VDE	173.5
*HYE81YX	8.5	ST	RSCR	253	219	1.75	188	163	1.37	CCC	173.5
HYE90Ya	9.0	ST	RSIR	265	229	1.30	197	171	1.01	CCC/VDE	173.5

R134a · 220-240V~60HZ											
型号 Model	气缸容积 Displacement (cm ³)	冷却方式 Cooling	电机类型 Motor Type	ASHRAE(-23.3°C)			CECOMAF(-25°C)			认证 Certification	高度 Height (mm)
				制冷量 Cooling Capacity (W)		COP (W/W)	制冷量 Cooling Capacity (W)		COP (W/W)		
				W	kcal/h	W/W	W	kcal/h	W/W		
HYB41Y62a	4.1	ST	RSIR	132	113	1.30	96	83	1.00	CCC,VDE	161
HYB30YHJ62a	3.0	ST	RSIR	100	86	1.30	73	63	1.00	CCC,VDE	144

R134a · 220-240V~50HZ/60HZ											
型号 Model	气缸容积 Displacement (cm ³)	冷却方式 Cooling	电机类型 Motor Type	ASHRAE(-23.3°C)			CECOMAF(-25°C)			认证 Certification	高度 Height (mm)
				制冷量 Cooling Capacity (W)		COP (W/W)	制冷量 Cooling Capacity (W)		COP (W/W)		
				W	kcal/h	W/W	W	kcal/h	W/W		
HYE51YK63a	5.1	ST	RSCR	150	130	1.50	112	97	1.17	CCC,VDE	173.5
				170	147	1.50	127	109	1.17		
HYE55Y63	5.5	ST	RSIR	145	125	1.28	108	93	1.00	CCC,VDE	167
				165	143	1.29	123	106	1.01		
HYE55YL63	5.5	ST	RSIR	155	134	1.10	115	100	0.86	CCC,VDE	169
				175	151	1.15	130	113	0.90		
HYE55YG63a	5.5	ST	RSCR	150	130	1.20	112	97	0.94	CCC,VDE	173.5
				170	147	1.35	127	109	1.05		
HYE55YG63	5.5	ST	RSCR	145	125	1.35	108	93	1.05	CCC,VDE	173.5
				170	147	1.35	127	109	1.05		
HYE55YT63	5.5	ST	RSCR	160	138	1.62	119	103	1.26	CCC,VDE	173.5
				188	162	1.64	140	121	1.28		
HYE60Y63	6	ST	RSIR	165	143	1.28	123	106	1.00	CCC,VDE	167
				185	160	1.29	138	119	1.01		
HYE60YL63	6	ST	RSIR	175	151	1.10	130	113	0.86	CCC	169
				195	168	1.15	145	126	0.90		
HYE60YG63	6	ST	RSCR	165	143	1.35	123	106	1.05	CCC,VDE	173.5
				190	164	1.35	142	122	1.05		
HYE69Y63	6.7	FC	RSIR	190	164	1.26	142	122	0.98	CCC,VDE	173.5
				208	180	1.27	155	134	0.99		
HYB41YK63a	4.1	ST	RSCR	110	95	1.29	80	69	0.99	CCC,VDE	161
				132	113	1.50	96	83	1.16		
HYB30YJ63a	3	ST	RSIR	78	67	0.95	57	49	0.73	CCC,VDE	130
				90	78	1.05	66	57	0.81		
HYB35YJ63a	3.5	ST	RSIR	90	78	0.95	66	57	0.73	CCC,VDE	138
				104	90	1.05	76	66	0.81		

PART 03

技术信息
Technical Information

03

一般技术信息

General Technical Information

- 1、压缩机在真空条件下不得加高电压测试或进行起动测试；
- 2、压缩机可在不大于下表平衡压力85%的标称电压下起动；

制冷剂	平衡压力 (kgf/cm ²) (表压)	
	LBP	HMBP
R134a	5.5	6.9
R600a	2.5	3.1

- 3、冷媒注入时，会出现冷媒、冷冻机油上下分层现象，请不要立即起动压缩机。若此时起动压缩机，由于压缩机润滑不足，易导致机械泵体损伤。且压力未平衡起动，会导致压缩机起动不良。

- 1、The compressor under vacuum condition should not be tested at high voltage or tested for startup.
- 2、The compressor can be started under the nominal voltage under not more than 85% of equilibrium pressure in the table below.

Refrigerant	Balance Pressure (kgf/cm ²) (gauge pressure)	
	LBP	HMBP
R134a	5.5	6.9
R600a	2.5	3.1

- 3、When filling the refrigerant into the compressor, there will appear the phenomenon of stratification that the refrigerant oil is at bottom, in this case, please don't immediately start up the compressor, if you do so, the mechanical components may be scratched due to insufficient amount of lubricating refrigerator oil; moreover, the pressure has not achieved equilibrium, which will cause poor startup.



- 1、压缩机搬运过程中需要保持电器件垂直，不能倒置，并尽量避免撞击和振动；
- 2、压缩机起动器、保护器等电器件必须使用配套制定的式样；
- 3、拔出橡皮塞，请在5分钟内将压缩机与制冷系统连接，不允许有任何空气中的灰尘或潮气进入压缩机里面；
- 4、不要对吸气管、排气管施加强制性弯曲力；
- 5、不得往压缩机内注入任何非指定液体；
- 6、制冷系统不能含氟系列残渣物（除锈剂、清洗剂（包含R113）等），有机物的残余量在100mg以下；
- 7、冷媒充注不要超过规定量；
- 8、压缩机外接电源线不能接错，若发生误接线，压缩机逆转，压缩机不能再使用；
- 9、压缩机端子罩内的配线须使用耐热性高的配线。

- 1、During the handing of the compressor, it is required to keep the compressor in vertical position, don't place it upside down and avoid impact and vibration as far as possible.
- 2、Electric components like starter, protector etc. of the compressor must adopt the specifications specified by our company.
- 3、Pull out the rubber plug, please connect the compressor with the refrigerating system within 5 minutes, it is not allowed to let any dust or moisture in the air enter the compressor.
- 4、Do not apply positive bending force to the suction and exhaust pipes.
- 5、It is forbidden to fill any non-specified liquid into the compressor.
- 6、The refrigerating system should not contain chlorine series residue (rust remover, cleaning agent (containing R113 etc.), and the amount of residual organic matter should be below 100mg.
- 7、The refrigerant charge should not exceed the specified amount.
- 8、Do not wrongly connect the external power lines of compressor. If they are connected wrongly, the compressor will be reversed and can not be used any longer.
- 9、The wires in the terminal cover of the compressor must use high temperature resistant ones.

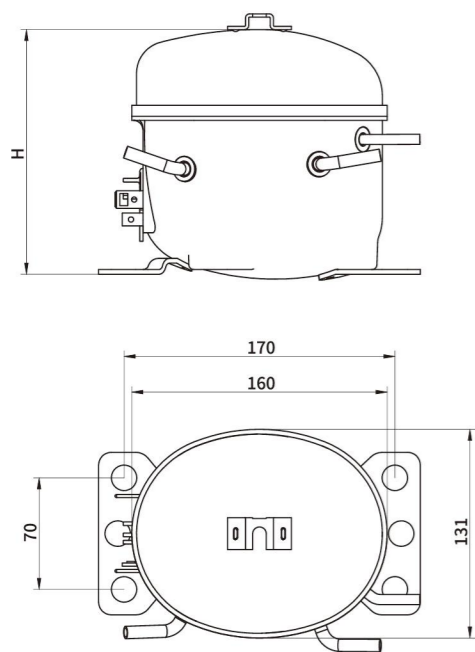
- 1、压缩机出厂后库存期不超过6个月。如果超过6个月，请检查压缩机内的干燥氮气是否充足，必要时应立即补充；
- 2、请将压缩机储存于通风干燥的地方，尽量避免湿气。

- 1、The warehouse storage period of the compressor after delivery should preferably not exceed 6 months; If the storage period exceeds 6 months, please check if the dry nitrogen gas in the compressor is sufficient, and make up it, if necessary.
- 2、Please store the compressor in a well ventilated dry place and try to avoid moisture.

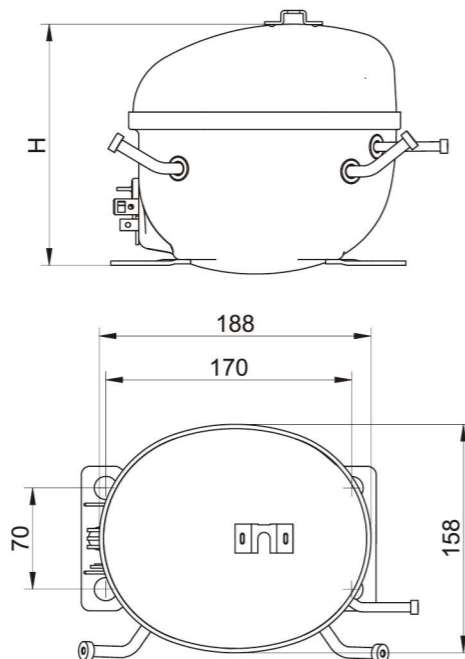
外形尺寸图

Compressor Dimensional Drawings

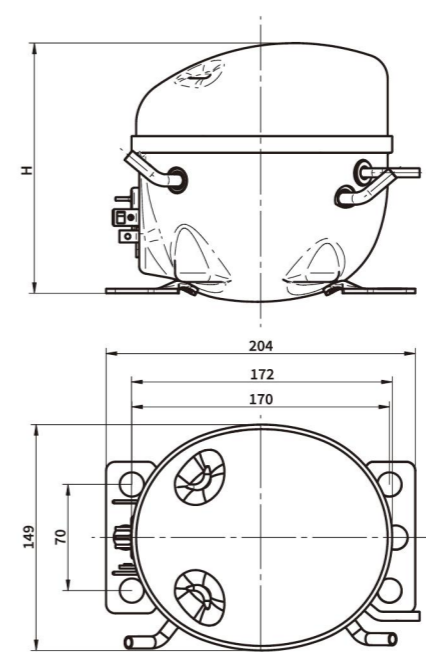
HYB 系列



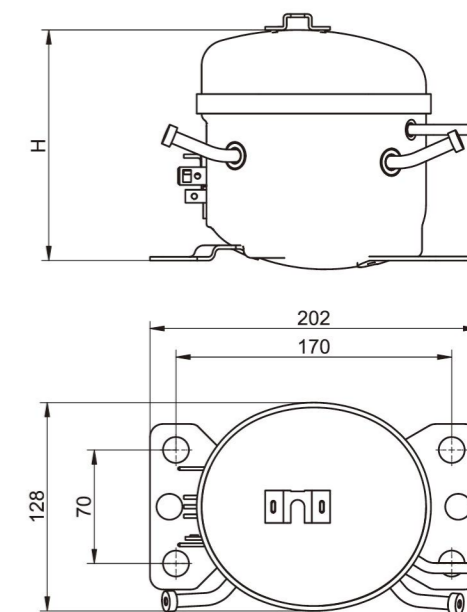
HYE 系列



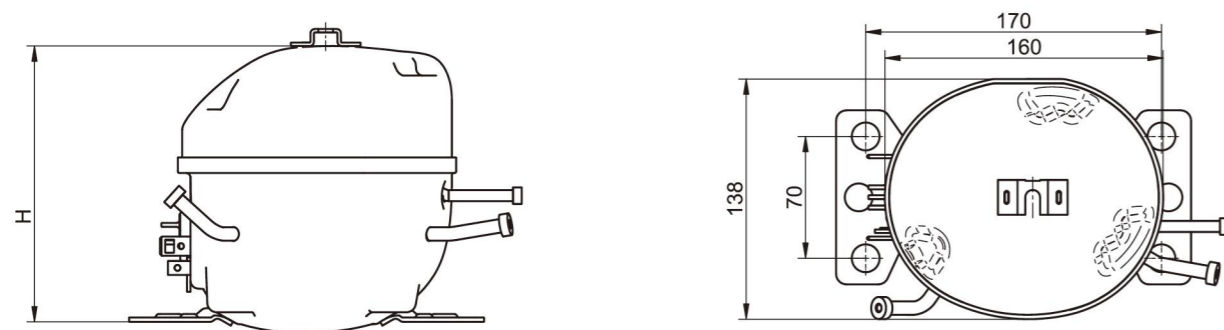
HYS 系列



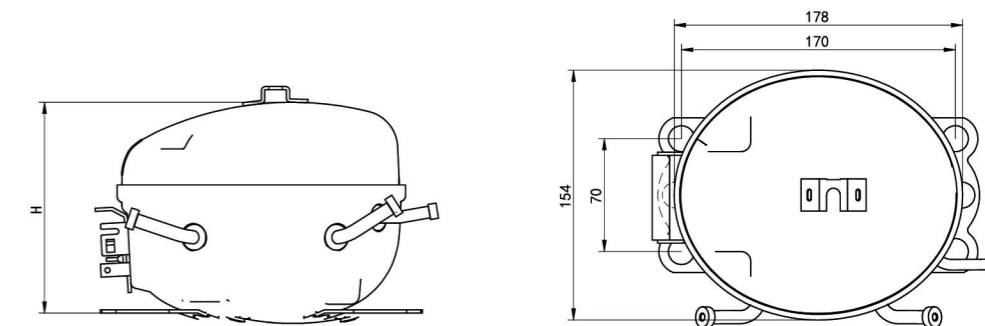
HYB-J 系列



HYJ 系列



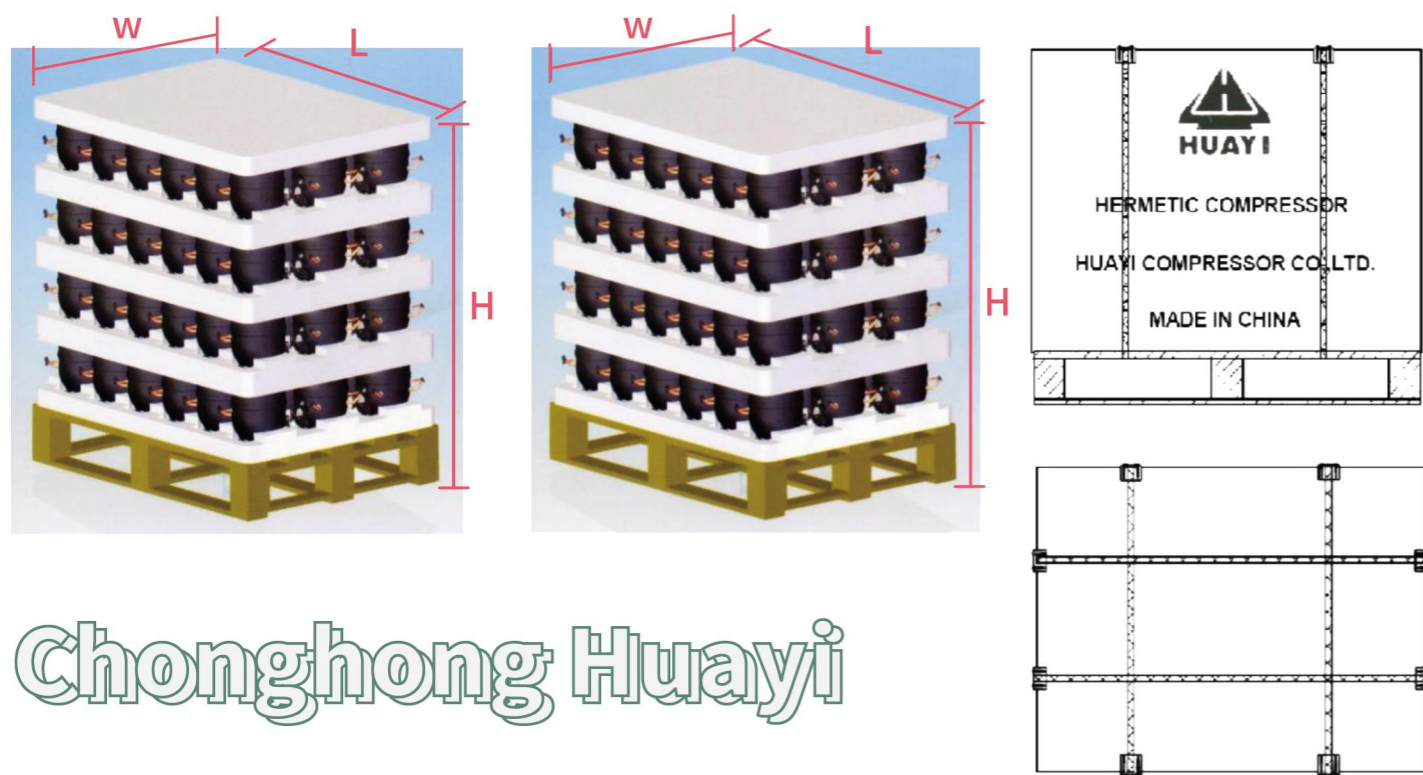
HVM 系列



包装 Packaging

压缩机类型 Compressor Type	包装数量(台/包) Quantity	包装外形尺寸(长×宽×高) Overall dimensions(L×W×H)	适用包装类型 Applicable packaging types	备注 Notes
HYE压缩机 HYE SERIES	120	1120x910x1150(1130)	国内R600a分体支架压缩机 Domestic	5层 5Layers
	90	1120x820x1150(1130)	国内R134a、国内R600a整体支架压缩机 Domestic	5层 5Layers
	72	1120x820x960(1130)	出口 Export	4层 4Layers
HYB/HYJ压缩机 HYB/HYJ SERIES	126	1120x820x1230(1180)	国内 Domestic	6层 6Layers
	105	1120x820x1060(1020)	出口 Export	5层 5Layers
HYB-J压缩机 HYB-J SERIES	175	1135x830x1265(1150)	国内 Domestic	7层 7Layers
	125/150	1135x830x1030(920)	出口 Export	5/6层 5/6Layers
HYS压缩机 HYS SERIES	120	1120x910x1070(1130)	国内 Domestic	5层 5Layers
	72	1120x820x900(870)	出口 Export	4层 4Layers

包装整体图 Package Diagram



Chonghong Huayiyi

附件 Fixings

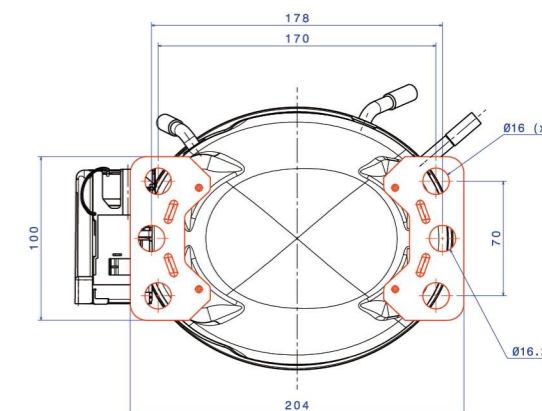
电器具的生产厂家可以通过安装附件将压缩机固定在箱体底板上，使压缩机和制冷系统连接在一起。

Fixings allow the manufacturer of appliances to fix the compressor to the appliance base, connecting it to the cooling system.

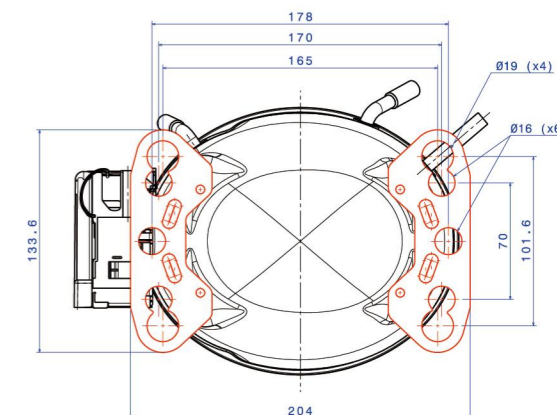
底脚板 Mounting feet

系列 Range	底脚板 Mounting feet	
B/F/U/L/P/X	<p>欧洲版本 一组4个直径16.5毫米的孔，轴间距：70×170毫米</p> <p>European type Set of 4 holes of 16.5mm DIA with inter-axes: 70×170mm</p>	<p>美洲版本 两组4个孔： 1.- 一组4个直径16.5毫米的孔，轴间距：70×170毫米 2.- 一组¼英寸（19毫米）直径的孔，轴间距：4×6½英寸（101.6×165毫米）</p> <p>American type 1.- set of 16.5mm DIA with inter-axes: 70×170mm 2.- set of ¼ inch (19mm) DIA with inter-axes: 4×6½ inch (101.6×165mm)</p>

欧洲底脚板 European mounting feet

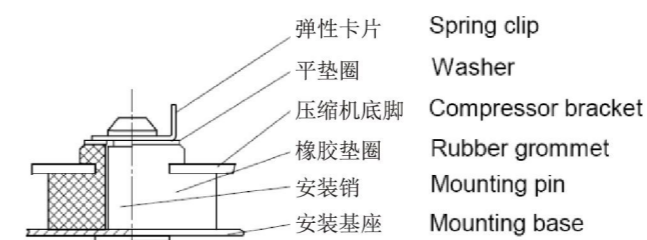


美洲底脚板 American mounting feet



安装方式 Mounting Type

安装方式 1 Mounting Type 1



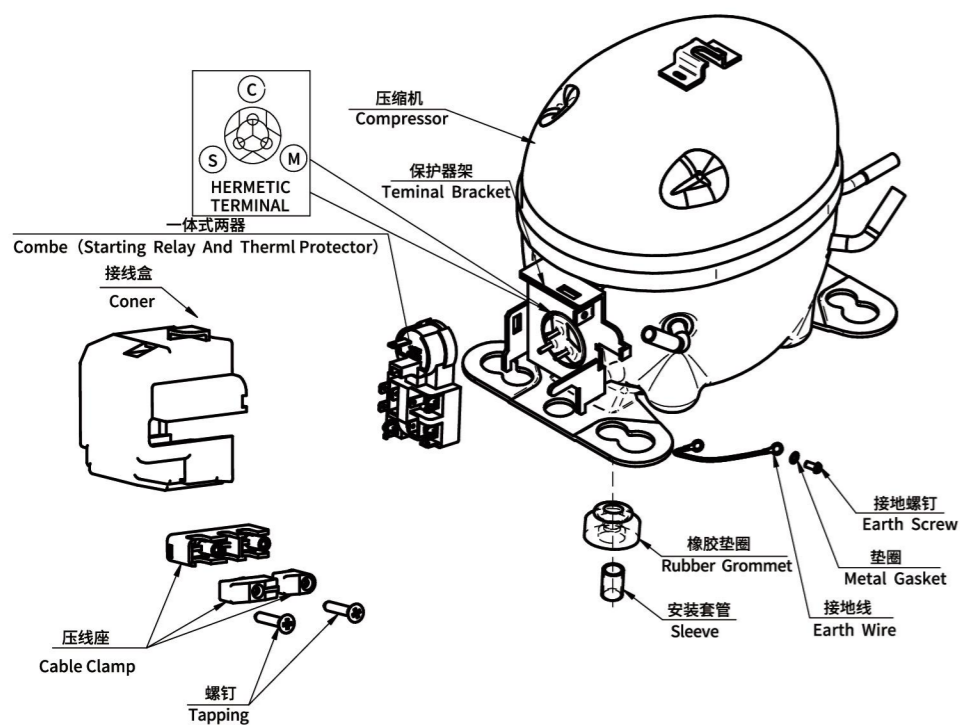
安装方式 2 Mounting Type 2



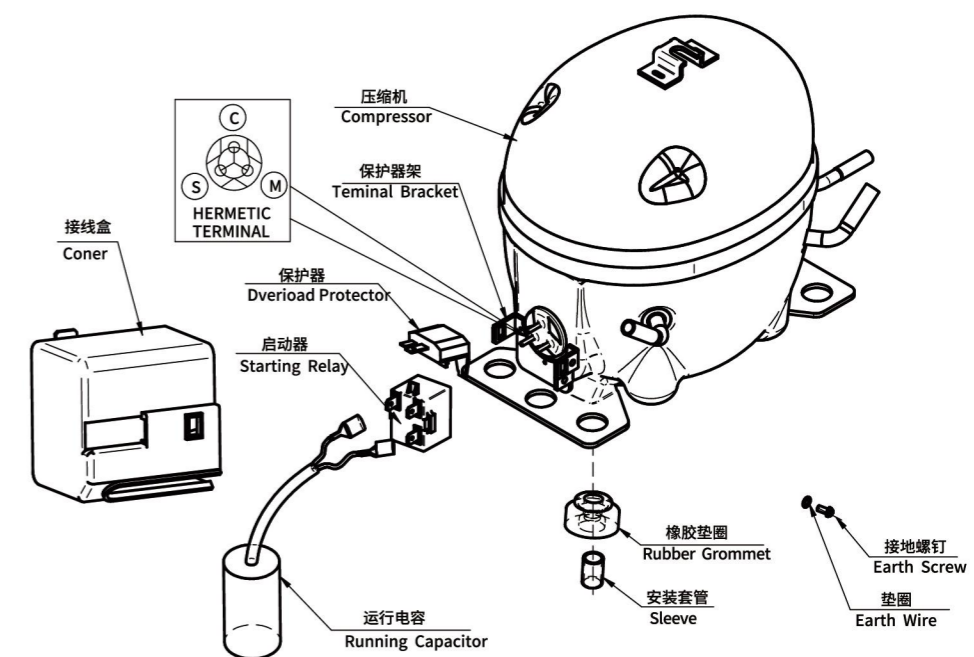
接线示意图

Wiring Diagram

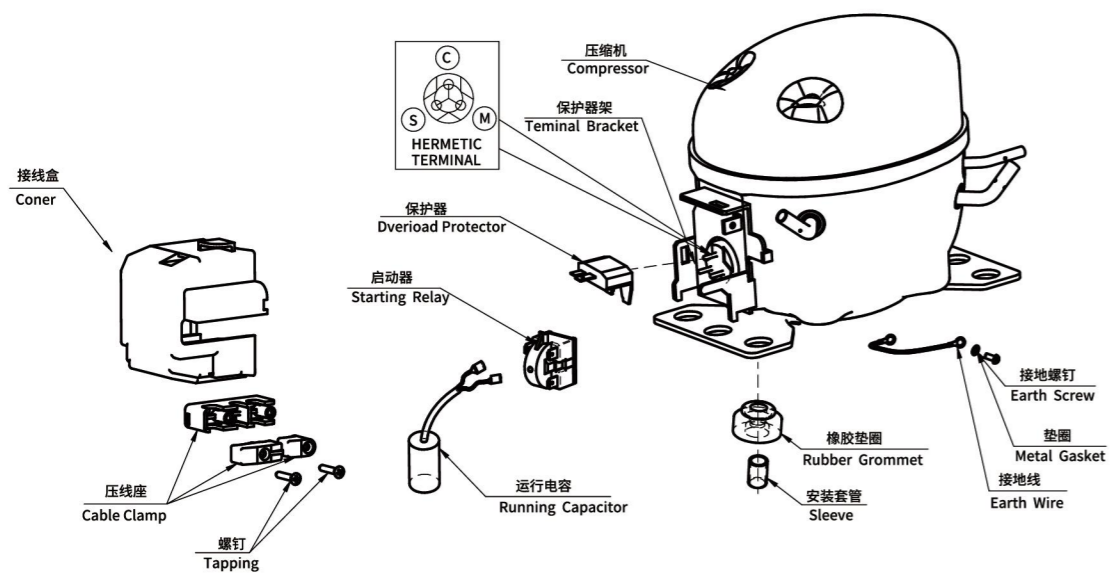
整体支架一体式两器 Integrated bracket with two devices



分体支架分体两器 Split bracket split two devices



整体支架分体式两器 Integral bracket split type two devices



分体两器整体式接线盒 Split two unit integrated junction box

