



INVOTECH

YF/YSF/YIF Series
Scroll Compressors

Special Design For
Low Temperature
Application

50Hz





Suzhou Invotech Scroll Technologies Co., Ltd.

is a high-tech company.

Our company is founded by a group of engineers who formerly worked for the world's largest manufacturer of scroll compressors. We are a team of passionate and highly qualified professionals with more than 25 years of experience in this industry. Our company's products in addition to impressive sales performance in the domestic market, also sales to Asia, Africa, Europe, South America, North America and other more than 40 countries and regions.

Our company provides specialized scroll compressors and related technical consulting services for heat pump water heaters, refrigeration and air conditioning, chillers and other applications. We are willing to provide our customers with jointly developed or Turn-Key solutions to meet their needs.

Our mission: To become a leading global provider of climate and energy solutions, building an energy-saving and low-carbon ecological environment together!

For more information please visit:

www.invotech.cn

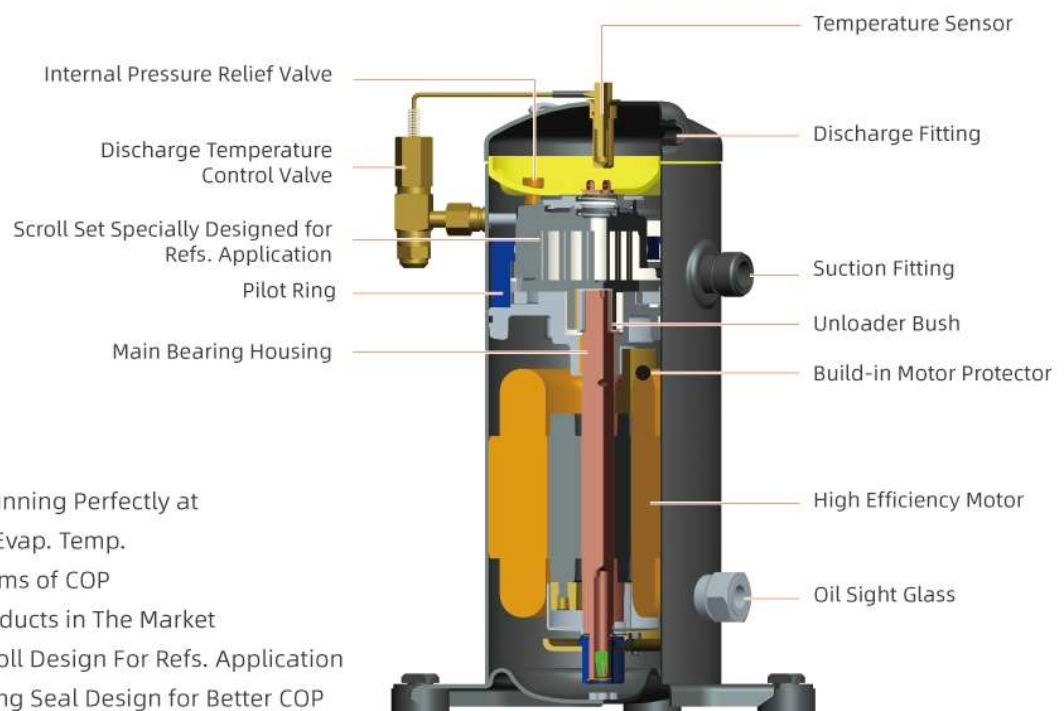


| | |
|------------------------------------|----|
| <i>Product Features</i> | 1 |
| <i>Models / Operating Envelope</i> | 3 |
| <i>Nomenclature</i> | 4 |
| <i>Technical Specifications</i> | |
| YF/YSF R404A | 5 |
| YF R448A R449A | 8 |
| YF R452A | 10 |
| YIF R404A | 12 |
| <i>Capacity</i> | |
| YF/YSF R404A | 13 |
| YF R448A R449A | 20 |
| YF R452A | 22 |
| YIF R404A | 24 |
| <i>Dimensions</i> | 25 |
| <i>Application Instruction</i> | 32 |

YF Series

Scroll Compressors With Dual-Compliance For Low. Temp. Application

- Specific Design For Refs. Application, Not Only The Scroll Set But Also The Unit, Precise Product-Definition Based On Customer's Need
- Both Build-in Radius and Axial Compliance Design, Improved Floating Seal Design for Better Energy Efficiency
- Excellent Discharge Temperature Management to Stretch Operation Envelope
- Accurate Calculation of Load and Sealing Force for Running Sound Optimization
- High Efficiency Motor Design



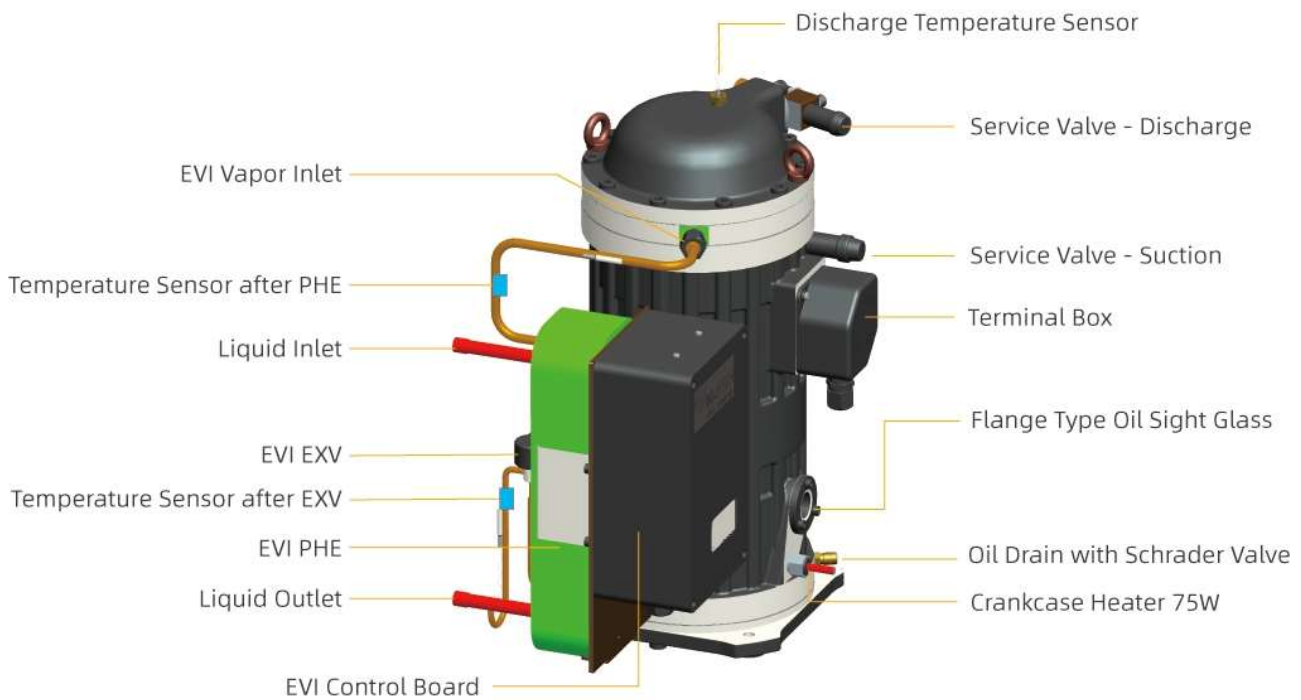
Features

- Be Capable of Running Perfectly at as low as -40°C Evap. Temp.
- 20% Better in Terms of COP Than Similar Products in The Market
- Truly Specific Scroll Design For Refs. Application
- Optimized Floating Seal Design for Better COP
- Multiple Internal Protections
 - High Pressure Protection
 - Overload Protection

YSF Series

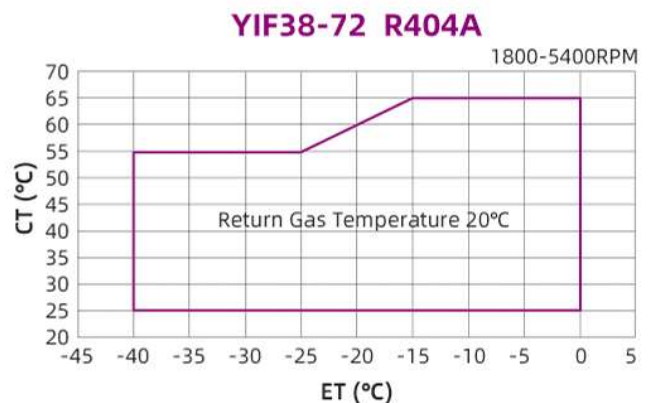
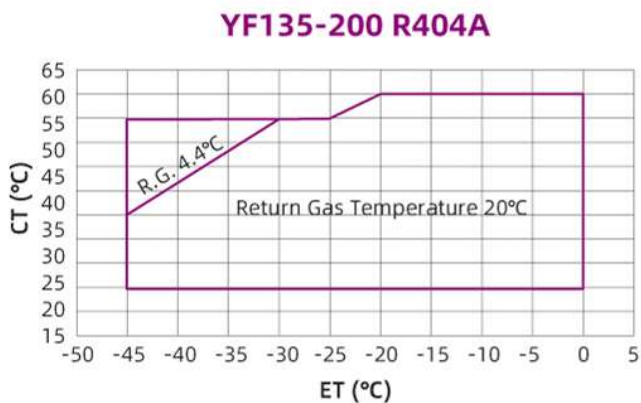
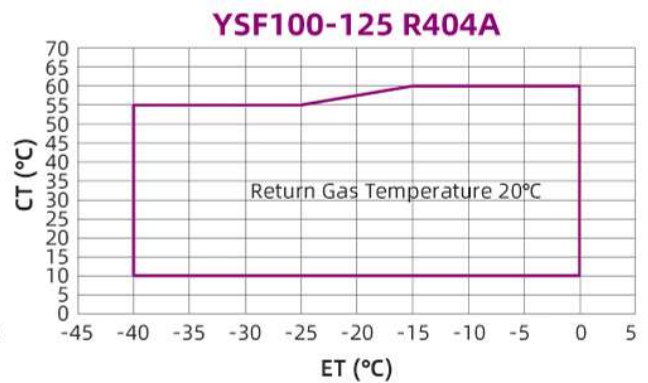
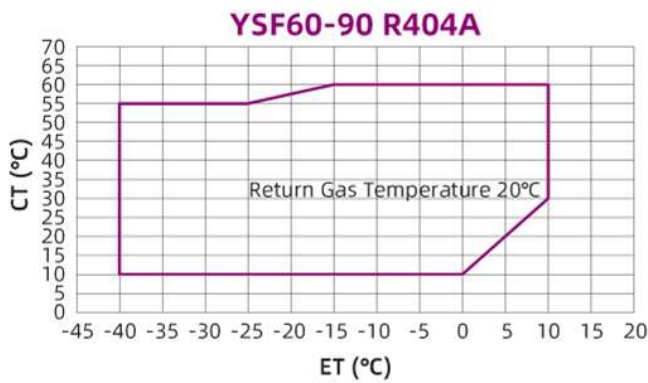
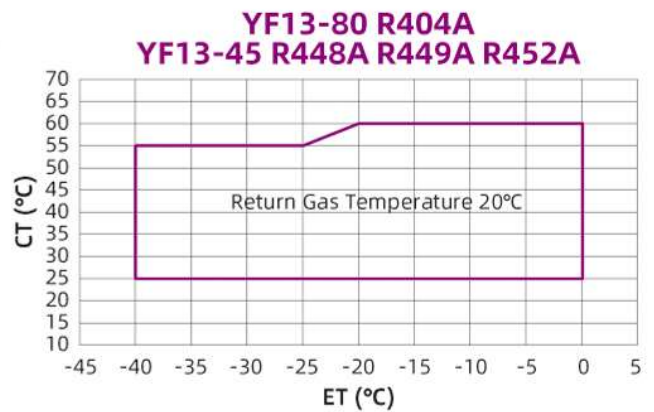
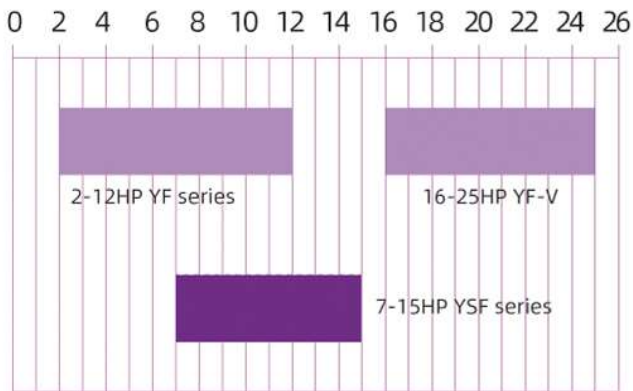
Semi-Hermetic Scroll Compressors With Dual-Compliance For Low. Temp. Application

- Specific Design for Refs. Application, Not Only the Scroll Set But Also the Unit, Precise Product-Definition Based on Customer's
- Both Build-in Radius and Axial Compliance Design, Improved Floating Seal Design for Better Energy Efficiency
- Excellent Discharge Temperature Management to Stretch Operation Envelope
- Accurate Calculation of Load and Sealing Force for Running Sound Optimization
- High Efficiency Motor Design
- Integrated Vapor Injection and Controller
- Evaporating Temperature can be Lower to -40°C
- Repairable



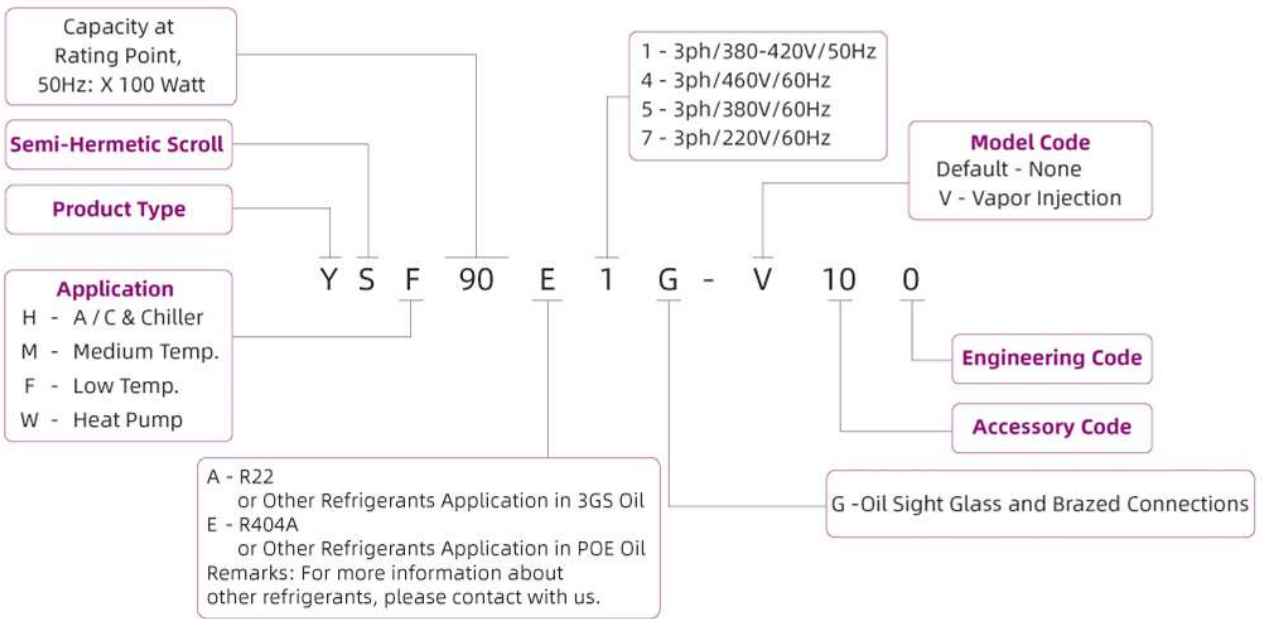
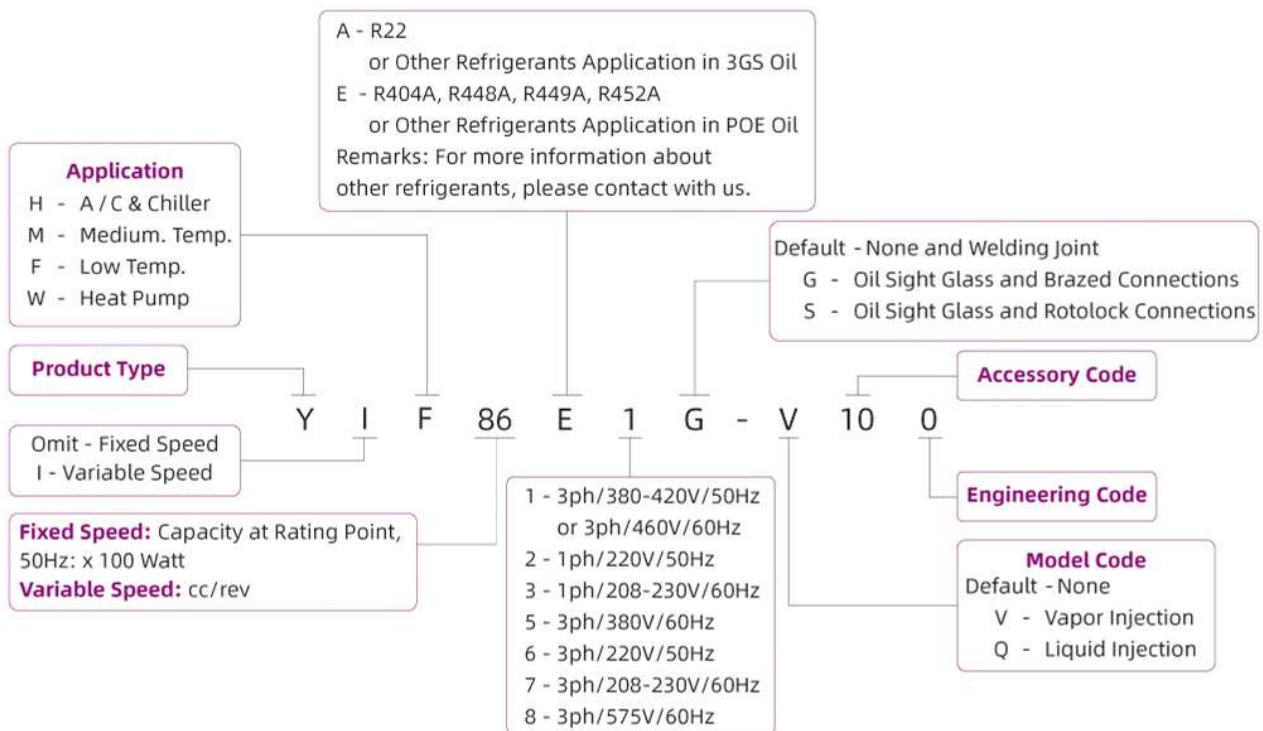
YF/YSF/YIF Series

Models / Operating Envelope



YF/YSF/YIF Series

Nomenclature



YF Series

Specifications

50Hz

R404A

| Model | YF13E2G-Q102 | YF17E2G-Q102 | YF20E2G-Q102 | YF25E2G-Q100 | YF29E2G-Q100 | YF35E2G-Q100 | YF13E1G-Q100 | YF17E1G-Q100 | YF20E1G-Q100 | YF25E1G-Q100 | YF29E1G-Q100 |
|---------------------------|------------------|--------------|--------------|--------------|--------------|--------------|------------------|--------------|--------------|--------------|--------------|
| Electricity | 220V/1~/50Hz | | | | | | 380-420V/3~/50Hz | | | | |
| Power in Horse Power (HP) | 2 | 2.5 | 3 | 3.5 | 4 | 5 | 2 | 2.5 | 3 | 3.5 | 4 |
| Displacement (cc/rev) | 33.3 | 42 | 46.6 | 58 | 67.8 | 83.3 | 33.3 | 42 | 46.6 | 58 | 67.8 |
| Refrigerant | R404A | | | | | | | | | | |
| Cooling Capacity (W) | 1386 | 1770 | 2079 | 2695 | 3145 | 3731 | 1386 | 1770 | 2079 | 2695 | 3145 |
| Power in Watt (W) | 1247 | 1599 | 1866 | 2324 | 2569 | 3004 | 1237 | 1567 | 1823 | 2324 | 2516 |
| COP (W/W) | 1.1 | 1.11 | 1.11 | 1.16 | 1.22 | 1.24 | 1.12 | 1.13 | 1.14 | 1.16 | 1.25 |
| Running Current (A) | 6.1 | 7.8 | 9.1 | 10.5 | 11.9 | 14.4 | 2.5 | 2.9 | 4.5 | 5 | 5.3 |
| LRA (A) | 76 | 76 | 76 | 109 | 109 | 140 | 22 | 22 | 45 | 60 | 60 |
| MOC (A) | 13.4 | 14.2 | 16.2 | 20 | 23.3 | 26.2 | 3.8 | 4.4 | 5.8 | 7.5 | 8.8 |
| Crankcase Heater (W) | 70 | | | | | | | | | | |
| Fitting Dimensions (mm) | | | | | | | | | | | |
| Discharge Tube (ID) | 12.87-12.97 | | | | | | | | | | |
| Suction Tube(ID) | 22.35-22.45 | | | | | | | | | | |
| Product Dimensions (mm) | | | | | | | | | | | |
| Length (L) | 239 | | | | | | | | | | |
| Width (W) | 239 | | | | | | | | | | |
| Height (H) | 418 | | | | | 463 | | 418 | | | |
| Feet Dimensions (Hole) | 190.5×190.5(8.8) | | | | | | | | | | |
| Oil Type | POE | | | | | | | | | | |
| Initial Charge Volume (L) | 1.4 | | | | | | | | | | |
| Recharge Volume (L) | 1.25 | | | | | | | | | | |
| Max Pressure (MPa) | | | | | | | | | | | |
| High Side | 3.2 | | | | | | | | | | |
| Low Side | 2 | | | | | | | | | | |
| Weight (kg) | 31 | 31 | 31 | 33 | 33 | 38 | 29 | 29 | 30 | 31 | 31 |

E.T. -31.6°C, C.T. 40.6°C, R.G. 4.4°C, No Subcooling

YF Series

Specifications

50Hz

R404A

| Model | YF35E1G-Q100 | YF41E1G-Q100 | YF45E1G-Q100 | YF56E1G-Q100 | YF65E1G-Q100 | YF72E1G-Q100 | YF80E1G-Q100 | YF135E1G-V100 | YF170E1G-V100 | YF200E1G-V100 |
|---------------------------|------------------|--------------|--------------|--------------|--------------|--------------|--------------|---------------|---------------|---------------|
| Electricity | 380-420V/3~/50Hz | | | | | | | | | |
| Power in Horse Power (HP) | 5 | 6 | 7 | 8 | 9 | 10 | 12 | 16 | 22 | 25 |
| Displacement (cc/rev) | 83.3 | 98.3 | 108 | 123 | 145.4 | 167.2 | 189.1 | 265.5 | 332.8 | 392 |
| Refrigerant | R404A | | | | | | | | | |
| Cooling Capacity (W) | 3731 | 4371 | 5083 | 5560 | 6751 | 7621 | 8657 | 18000 | 21430 | 25242 |
| Power in Watt (W) | 2889 | 3358 | 3704 | 4560 | 5193 | 5862 | 6614 | 10800 | 12309 | 14499 |
| COP (W/W) | 1.29 | 1.3 | 1.37 | 1.22 | 1.3 | 1.3 | 1.31 | 1.67 | 1.74 | 1.74 |
| Running Current (A) | 6.6 | 7 | 7.3 | 9.7 | 10.5 | 11 | 12.4 | 17.9 | 22.4 | 26.4 |
| LRA (A) | 60 | 65 | 85 | 85 | 117 | 117 | 121 | 216 | 266 | 266 |
| MOC (A) | 10.3 | 12.1 | 13.2 | 18 | 20.1 | 22.7 | 25.6 | 40.2 | 47.4 | 57 |
| Crankcase Heater (W) | 70 | | | 90 | | | | 120 | | |
| Fitting Dimensions (mm) | | | | | | | | | | |
| Discharge Tube (ID) | 12.87-12.97 | | | 22.35-22.45 | | | | 28.80-28.90 | | |
| Suction Tube (ID) | 22.35-22.45 | | | 28.83-28.93 | | | | 41.56-41.66 | | |
| Product Dimensions (mm) | | | | | | | | | | |
| Length (L) | 239 | | | 272 | | | | 359.8 | | |
| Width (W) | 239 | | | 248 | | | | 326.2 | | |
| Height (H) | 463 | | | 507 | | | | 671.2 | | |
| Feet Dimensions (Hole) | 190.5×190.5(8.8) | | | | | | 232×232(8.8) | | | |
| Oil Type | POE | | | | | | | | | |
| Initial Charge Volume (L) | 1.6 | | | 2.7 | | 3 | | 6 | | |
| Recharge Volume (L) | 1.45 | | | 2.55 | | 2.85 | | 5.8 | | |
| Max Pressure (MPa) | | | | | | | | | | |
| High Side | 3.2 | | | | | | 2.9 | | | |
| Low Side | 2 | | | | | | 0.6 | | | |
| Weight (kg) | 32 | 33 | 38 | 53 | 53 | 54 | 54 | 104 | 106 | 106 |

E.T. -31.6°C, C.T. 40.6°C, R.G. 4.4°C, No Subcooling

YSF Series

Specifications

50Hz
R404A

| Model | YSF60E1G-V100 | YSF65E1G-V100 | YSF75E1G-V100 | YSF85E1G-V100 | YSF90E1G-V100 | YSF100E1G-V100 | YSF125E1G-V100 |
|---------------------------|-------------------|---------------|---------------|---------------|---------------|----------------|----------------|
| Electricity | 380-420V/3~/50Hz | | | | | | |
| Power in Horse Power (HP) | 7 | 8 | 9 | 10 | 12 | 13 | 15 |
| Displacement (cc/rev) | 115.5 | 123 | 145.4 | 167.2 | 189.1 | 197.1 | 243.7 |
| Refrigerant | R404A | | | | | | |
| Cooling Capacity (W) | 6910 | 7360 | 8704 | 10010 | 11320 | 11800 | 13500 |
| Power in Watt (W) | 4369 | 4660 | 5440 | 6256 | 6988 | 7284 | 9507 |
| COP (W/W) | 1.58 | 1.58 | 1.6 | 1.6 | 1.62 | 1.62 | 1.42 |
| Running Current (A) | 9.5 | 10 | 10.8 | 11.9 | 12.9 | 13.3 | 18 |
| LRA (A) | 117 | 117 | 117 | 121 | 121 | 121 | 148.5 |
| MOC (A) | 17.9 | 19.1 | 22.3 | 25.7 | 28.8 | 27 | 33.4 |
| Crankcase Heater (W) | 75 | | | | | | |
| Fitting Dimensions (mm) | | | | | | | |
| Discharge Tube (ID) | 22.50-22.60 | | | | | | |
| Suction Tube(ID) | 28.65-28.75 | | | | | | 35.20-35.30 |
| Product Dimensions (mm) | | | | | | | |
| Length (L) | 488 | | | | | | |
| Width (W) | 361 | | | | | | |
| Height (H) | 574 | | | | | | 581 |
| Feet Dimensions (Hole) | 190.5×190.5(10.2) | | | | | | |
| Oil Type | POE | | | | | | |
| Initial Charge Volume (L) | 3.4 | | | | | | |
| Recharge Volume (L) | 3.25 | | | | | | |
| Max Pressure (MPa) | | | | | | | |
| High Side | 3.2 | | | | | | |
| Low Side | 2 | | | | | | |
| Weight (kg) | 90 | 90 | 91 | 91 | 91 | 91 | 92 |

E.T. -31.6°C, C.T. 40.6°C, R.G. 4.4°C, No Subcooling
With vapor injection kits

YF Series

Specifications

50Hz

R448A R449A

| Model | YF13E2G-Q102 | YF17E2G-Q102 | YF20E2G-Q100 | YF25E2G-Q100 | YF29E2G-Q100 | YF35E2G-Q100 | YF13E1G-Q100 | |
|---------------------------|------------------|--------------|--------------|--------------|--------------|--------------|------------------|--|
| Electricity | 220V/1~/50Hz | | | | | | 380-420V/3~/50Hz | |
| Power in Horse Power (HP) | 2 | 2.5 | 3 | 3.5 | 4 | 5 | 2 | |
| Displacement (cc/rev) | 33.3 | 42 | 46.6 | 58 | 67.8 | 83.3 | 33.3 | |
| Refrigerant | R448A R449A | | | | | | | |
| Cooling Capacity (W) | 1315 | 1679 | 1972 | 2556 | 2915 | 3458 | 1311 | |
| Power in Watt (W) | 1211 | 1553 | 1812 | 2257 | 2395 | 2800 | 1220 | |
| COP (W/W) | 1.09 | 1.08 | 1.09 | 1.13 | 1.22 | 1.24 | 1.07 | |
| Running Current (A) | 5.6 | 7.2 | 8.4 | 10.5 | 11.1 | 13 | 2.6 | |
| LRA (A) | 76 | 76 | 76 | 109 | 109 | 140 | 22 | |
| MOC (A) | 10.8 | 13.9 | 16.2 | 20.2 | 23.9 | 27.9 | 4.4 | |
| Crankcase Heater (W) | 70 | | | | | | | |
| Fitting Dimensions (mm) | | | | | | | | |
| Discharge Tube (ID) | 12.87-12.97 | | | | | | | |
| Suction Tube (ID) | 22.35-22.45 | | | | | | | |
| Product Dimensions (mm) | | | | | | | | |
| Length (L) | 239 | | | | | | | |
| Width (W) | 239 | | | | | | | |
| Height (H) | 418 | | | | | 463 | 418 | |
| Feet Dimensions (Hole) | 190.5×190.5(8.8) | | | | | | | |
| Oil Type | POE | | | | | | | |
| Initial Charge Volume (L) | 1.4 | | | | | | | |
| Recharge Volume (L) | 1.25 | | | | | | | |
| Max Pressure (MPa) | | | | | | | | |
| High Side | 3.2 | | | | | | | |
| Low Side | 2 | | | | | | | |
| Weight (kg) | 31 | 31 | 31 | 33 | 33 | 38 | 29 | |

E.T. -31.6°C, C.T. 40.6°C, R.G. 4.4°C, No Subcooling

YF Series

Specifications

50Hz

R448A R449A

| Model | YF17E1G-Q100 | YF20E1G-Q100 | YF25E1G-Q100 | YF29E1G-Q100 | YF35E1G-Q100 | YF41E1G-Q100 | YF45E1G-Q100 |
|---------------------------|------------------|--------------|--------------|--------------|--------------|--------------|--------------|
| Electricity | 380-420V/3~/50Hz | | | | | | |
| Power in Horse Power (HP) | 2.5 | 3 | 3.5 | 4 | 5 | 6 | 7 |
| Displacement (cc/rev) | 42 | 46.6 | 58 | 67.8 | 83.3 | 98.3 | 108 |
| Refrigerant | R448A R449A | | | | | | |
| Cooling Capacity (W) | 1675 | 1967 | 2550 | 2915 | 3458 | 4051 | 4480 |
| Power in Watt (W) | 1546 | 17.98 | 2292 | 2417 | 2775 | 3225 | 3475 |
| COP (W/W) | 1.08 | 1.09 | 1.11 | 1.21 | 1.25 | 1.26 | 1.29 |
| Running Current (A) | 3.4 | 3.9 | 4.6 | 5.2 | 5.8 | 6.4 | 7 |
| LRA (A) | 22 | 45 | 60 | 60 | 60 | 65 | 65 |
| MOC (A) | 5.6 | 6.5 | 8.3 | 9.2 | 10.6 | 11.8 | 12.6 |
| Crankcase Heater (W) | 70 | | | | | | |
| Fitting Dimensions (mm) | | | | | | | |
| Discharge Tube (ID) | 12.87-12.97 | | | | | | |
| Suction Tube(ID) | 22.35-22.45 | | | | | | |
| Product Dimensions (mm) | | | | | | | |
| Length (L) | 239 | | | | | | |
| Width (W) | 239 | | | | | | |
| Height (H) | 418 | | | 463 | | | |
| Feet Dimensions (Hole) | 190.5x190.5(8.8) | | | | | | |
| Oil Type | POE | | | | | | |
| Initial Charge Volume (L) | 1.4 | | | 1.6 | | | |
| Recharge Volume (L) | 1.25 | | | 1.45 | | | |
| Max Pressure (MPa) | | | | | | | |
| High Side | 3.2 | | | | | | |
| Low Side | 2 | | | | | | |
| Weight (kg) | 29 | 30 | 31 | 31 | 32 | 32 | 33 |

E.T. -31.6°C, C.T. 40.6°C, R.G. 4.4°C, No Subcooling

YF Series

Specifications

50Hz

R452A

| Model | YF13E2G-Q102 | YF17E2G-Q102 | YF20E2G-Q100 | YF25E2G-Q100 | YF29E2G-Q100 | YF35E2G-Q100 | YF13E1G-Q100 | |
|---------------------------|------------------|--------------|--------------|--------------|--------------|--------------|----------------------|--|
| Electricity | 220V/1~/50Hz | | | | | | 380-420V/ 3~/50Hz | |
| Power in Horse Power (HP) | 2 | 2.5 | 3 | 3.5 | 4 | 5 | 2 | |
| Displacement (cc/rev) | 33.3 | 42 | 46.6 | 58 | 67.8 | 83.3 | 33.3 | |
| Refrigerant | R452A | | | | | | | |
| Cooling Capacity (W) | 1386 | 1770 | 2079 | 2695 | 3145 | 3731 | 1386 | |
| Power in Watt (W) | 1247 | 1599 | 1866 | 2324 | 2569 | 3004 | 1237 | |
| COP (W/W) | 1.1 | 1.11 | 1.11 | 1.16 | 1.22 | 1.24 | 1.12 | |
| Running Current (A) | 6.1 | 7.8 | 9.1 | 10.5 | 11.9 | 14.4 | 2.5 | |
| LRA (A) | 76 | 76 | 76 | 109 | 109 | 140 | 22 | |
| MOC (A) | 13.4 | 14.2 | 16.2 | 20 | 23.3 | 26.2 | 3.8 | |
| Crankcase Heater (W) | 70 | | | | | | | |
| Fitting Dimensions (mm) | | | | | | | | |
| Discharge Tube (ID) | 12.87-12.97 | | | | | | | |
| Suction Tube(ID) | 22.35-22.45 | | | | | | | |
| Product Dimensions (mm) | | | | | | | | |
| Length (L) | 239 | | | | | | | |
| Width (W) | 239 | | | | | | | |
| Height (H) | 418 | | | | | 463 | 418 | |
| Feet Dimensions (Hole) | 190.5×190.5(8.8) | | | | | | | |
| Oil Type | POE | | | | | | | |
| Initial Charge Volume (L) | 1.4 | | | | | | | |
| Recharge Volume (L) | 1.25 | | | | | | | |
| Max Pressure (MPa) | | | | | | | | |
| High Side | 3.2 | | | | | | | |
| Low Side | 2 | | | | | | | |
| Weight (kg) | 31 | 31 | 31 | 33 | 33 | 38 | 29 | |

E.T. -31.6°C, C.T. 40.6°C, R.G. 4.4°C, No Subcooling

YF Series

Specifications

50Hz

R452A

| Model | YF17E1G-Q100 | YF20E1G-Q100 | YF25E1G-Q100 | YF29E1G-Q100 | YF35E1G-Q100 | YF41E1G-Q100 | YF45E1G-Q100 |
|---------------------------|------------------|--------------|--------------|--------------|--------------|--------------|--------------|
| Electricity | 380-420V/3~/50Hz | | | | | | |
| Power in Horse Power (HP) | 2.5 | 3 | 3.5 | 4 | 5 | 6 | 7 |
| Displacement (cc/rev) | 42 | 46.6 | 58 | 67.8 | 83.3 | 98.3 | 108 |
| Refrigerant | R452A | | | | | | |
| Cooling Capacity (W) | 1770 | 2079 | 2695 | 3145 | 3731 | 4371 | 5083 |
| Power in Watt (W) | 1567 | 1823 | 2324 | 2516 | 2889 | 3358 | 3704 |
| COP (W/W) | 1.13 | 1.14 | 1.16 | 1.25 | 1.29 | 1.3 | 1.37 |
| Running Current (A) | 2.9 | 4.5 | 5 | 5.3 | 6.6 | 7 | 7.3 |
| LRA (A) | 22 | 45 | 60 | 60 | 60 | 65 | 85 |
| MOC (A) | 4.4 | 5.8 | 7.5 | 8.8 | 10.3 | 12.1 | 13.2 |
| Crankcase Heater (W) | 70 | | | | | | |
| Fitting Dimensions (mm) | | | | | | | |
| Discharge Tube (ID) | 12.87-12.97 | | | | | | |
| Suction Tube(ID) | 22.35-22.45 | | | | | | |
| Product Dimensions (mm) | | | | | | | |
| Length (L) | 239 | | | | | | |
| Width (W) | 239 | | | | | | |
| Height (H) | 418 | | | 463 | | | |
| Feet Dimensions (Hole) | 190.5x190.5(8.8) | | | | | | |
| Oil Type | POE | | | | | | |
| Initial Charge Volume (L) | 1.4 | | | 1.6 | | | |
| Recharge Volume (L) | 1.25 | | | 1.45 | | | |
| Max Pressure (MPa) | | | | | | | |
| High Side | 3.2 | | | | | | |
| Low Side | 2 | | | | | | |
| Weight (kg) | 29 | 30 | 31 | 31 | 32 | 32 | 33 |

E.T. -31.6°C, C.T. 40.6°C, R.G. 4.4°C, No Subcooling

YIF Series

Specifications

50Hz

R404A

| Model | YIF38E1G-Q100 | YIF42E1G-Q100 | YIF50E1G-Q100 | YIF60E1G-Q100 | YIF72E1G-Q100 |
|--------------------------------|--------------------------|---------------|---------------|---------------|---------------|
| Power Input to Inverter Driver | 380-420V/3~/50Hz or 60Hz | | | | |
| Displacement (cc/rev) | 38 | 42 | 50 | 60 | 72 |
| Refrigerant | | | | | |
| Cooling Capacity (W) | 2616 | 2792 | 3488 | 4003 | 4813 |
| Power in Watt (W) | 2454 | 2533 | 3440 | 3955 | 4746 |
| COP (W/W) | 1.07 | 1.10 | 1.01 | 1.01 | 1.01 |
| Running current (A) | 4.2 | 4.6 | 5.5 | 6.1 | 7.3 |
| MOC (A) | 8.7 | 9.6 | 11.5 | 13.7 | 16.5 |
| Rated Motor Speed (RPM) | 4500 | | | | |
| Running Speed (RPM) | 1800-5400 | | | | |
| Crankcase Heater (W) | 70 | | | | |
| Fitting Dimensions (mm) | | | | | |
| Discharge Tube(ID) | 12.87-12.97 | | | | |
| Suction Tube(ID) | 22.35-22.45 | | | | |
| Product Dimensions (mm) | | | | | |
| Length (L) | 239 | | | | |
| Width (W) | 239 | | | | |
| Height (H) | 419 | | | | |
| Feet Dimensions (hole) | 190.5x190.5(8.8) | | | | |
| Oil Type | POE | | | | |
| Initial Charge Volume (L) | 1.4 | | | | |
| Recharge Volume (L) | 1.25 | | | | |
| Max Pressure (MPa) | | | | | |
| High Side | 3.2 | | | | |
| Low Side | 2 | | | | |
| Weight (kg) | 29.0 | 29.0 | 29.0 | 29.0 | 31.0 |

E.T. -31.6°C, C.T. 40.6°C, R.G. 4.4°C, No Subcooling @4500 RPM

| Model | YIF38E1G-Q100 | YIF42E1G-Q100 | YIF50E1G-Q100 | YIF60E1G-Q100 | YIF72E1G-Q100 |
|----------------------|---------------|---------------|---------------|---------------|---------------|
| Motor Speed (RPM) | 1800 | | | | |
| Cooling Capacity (W) | 971 | 1036 | 1294 | 1485 | 1786 |
| Power in Watt (W) | 1134 | 1170 | 1589 | 1827 | 2193 |
| Motor Speed (RPM) | 3600 | | | | |
| Cooling Capacity (W) | 2093 | 2234 | 2790 | 3202 | 3850 |
| Power in Watt (W) | 1963 | 2026 | 2752 | 3164 | 3797 |
| Motor Speed (RPM) | 5400 | | | | |
| Cooling Capacity (W) | 3134 | 3345 | 4179 | 4796 | 5766 |
| Power in Watt (W) | 2908 | 3002 | 4076 | 4687 | 5624 |

E.T. -31.6°C, C.T. 40.6°C, R.G. 4.4°C, No Subcooling @1800 RPM, 3600 RPM & 5400 RPM

YF Series

Capacity

50Hz

R404A

| Model | C.T. (°C) | E.T. (°C) | | | | | | | | | |
|---------------------|-----------------|-----------|------|------|------|------|------|------|-------|-------|-------|
| | | -40 | -35 | -30 | -25 | -20 | -15 | -10 | -5 | 0 | |
| YF13E2G-Q102 | Capacity (W) | 50 | 860 | 1074 | 1334 | 1645 | 2010 | 2433 | 2918 | 3469 | 4089 |
| | | 40 | 1007 | 1264 | 1577 | 1949 | 2386 | 2889 | 3464 | 4113 | 4842 |
| | | 30 | 1150 | 1439 | 1793 | 2216 | 2712 | 3285 | 3938 | 4675 | 5500 |
| | Power (W) | 50 | 1381 | 1450 | 1522 | 1595 | 1670 | 1747 | 1826 | 1908 | 1992 |
| | | 40 | 1147 | 1211 | 1276 | 1344 | 1413 | 1485 | 1559 | 1635 | 1714 |
| | | 30 | 982 | 1037 | 1094 | 1153 | 1214 | 1277 | 1343 | 1411 | 1482 |
| YF17E2G-Q102 | Capacity (W) | 50 | 1099 | 1371 | 1704 | 2101 | 2567 | 3107 | 3726 | 4429 | 5221 |
| | | 40 | 1285 | 1614 | 2013 | 2489 | 3046 | 3689 | 4423 | 5252 | 6182 |
| | | 30 | 1468 | 1837 | 2289 | 2830 | 3463 | 4194 | 5028 | 5969 | 7023 |
| | Power (W) | 50 | 1747 | 1835 | 1926 | 2018 | 2113 | 2211 | 2311 | 2414 | 2520 |
| | | 40 | 1451 | 1532 | 1615 | 1701 | 1789 | 1879 | 1973 | 2069 | 2169 |
| | | 30 | 1243 | 1313 | 1385 | 1459 | 1536 | 1617 | 1700 | 1786 | 1876 |
| YF20E2G-Q102 | Capacity (W) | 50 | 1290 | 1611 | 2002 | 2468 | 3015 | 3650 | 4377 | 5203 | 6133 |
| | | 40 | 1510 | 1896 | 2365 | 2924 | 3578 | 4334 | 5196 | 6170 | 7262 |
| | | 30 | 1725 | 2158 | 2689 | 3324 | 4068 | 4927 | 5906 | 7012 | 8250 |
| | Power (W) | 50 | 2052 | 2156 | 2262 | 2371 | 2483 | 2597 | 2715 | 2836 | 2960 |
| | | 40 | 1705 | 1800 | 1897 | 1998 | 2101 | 2208 | 2317 | 2431 | 2548 |
| | | 30 | 1460 | 1542 | 1627 | 1714 | 1805 | 1899 | 1997 | 2098 | 2204 |
| YF25E2G-Q100 | Capacity (W) | 50 | 1721 | 2148 | 2669 | 3290 | 4021 | 4867 | 5837 | 6938 | 8178 |
| | | 40 | 2013 | 2527 | 3153 | 3899 | 4771 | 5778 | 6927 | 8227 | 9683 |
| | | 30 | 2300 | 2878 | 3586 | 4432 | 5424 | 6569 | 7875 | 9350 | 11000 |
| | Power (W) | 50 | 2490 | 2616 | 2744 | 2876 | 3012 | 3151 | 3293 | 3440 | 3591 |
| | | 40 | 2068 | 2184 | 2302 | 2424 | 2549 | 2679 | 2811 | 2949 | 3091 |
| | | 30 | 1772 | 1871 | 1973 | 2079 | 2190 | 2304 | 2422 | 2545 | 2673 |
| YF29E2G-Q100 | Capacity (W) | 50 | 1952 | 2437 | 3028 | 3733 | 4562 | 5522 | 6622 | 7872 | 9278 |
| | | 40 | 2284 | 2868 | 3578 | 4423 | 5413 | 6556 | 7860 | 9334 | 10987 |
| | | 30 | 2609 | 3265 | 4068 | 5029 | 6154 | 7454 | 8935 | 10608 | 12481 |
| | Power (W) | 50 | 2825 | 2968 | 3114 | 3264 | 3417 | 3575 | 3737 | 3903 | 4075 |
| | | 40 | 2347 | 2478 | 2612 | 2750 | 2892 | 3039 | 3190 | 3346 | 3507 |
| | | 30 | 2010 | 2123 | 2239 | 2359 | 2484 | 2614 | 2748 | 2888 | 3033 |
| YF35E2G-Q100 | Capacity (W) | 50 | 2316 | 2892 | 3593 | 4429 | 5412 | 6551 | 7857 | 9339 | 11008 |
| | | 40 | 2710 | 3402 | 4245 | 5248 | 6423 | 7778 | 9325 | 11074 | 13035 |
| | | 30 | 3096 | 3874 | 4827 | 5966 | 7302 | 8843 | 10601 | 12586 | 14808 |
| | Power (W) | 50 | 3297 | 3464 | 3635 | 3810 | 3989 | 4173 | 4362 | 4556 | 4756 |
| | | 40 | 2739 | 2892 | 3049 | 3210 | 3376 | 3547 | 3723 | 3906 | 4094 |
| | | 30 | 2346 | 2478 | 2614 | 2754 | 2900 | 3051 | 3208 | 3371 | 3540 |

Remark: Suction Temperature 20°C, No Subcooling

YF Series

Capacity

50Hz R404A

| Model | C.T. (°C) | E.T. (°C) | | | | | | | | | |
|---------------------|-----------------|-----------|------|------|------|------|------|------|-------|-------|-------|
| | | -40 | -35 | -30 | -25 | -20 | -15 | -10 | -5 | 0 | |
| YF13E1G-Q100 | Capacity (W) | 50 | 860 | 1074 | 1334 | 1645 | 2010 | 2433 | 2918 | 3469 | 4089 |
| | | 40 | 1007 | 1264 | 1577 | 1949 | 2386 | 2889 | 3464 | 4113 | 4842 |
| | | 30 | 1150 | 1439 | 1793 | 2216 | 2712 | 3285 | 3938 | 4675 | 5500 |
| | Power (W) | 50 | 1342 | 1414 | 1486 | 1561 | 1638 | 1717 | 1797 | 1881 | 1966 |
| | | 40 | 1102 | 1167 | 1234 | 1303 | 1374 | 1447 | 1523 | 1601 | 1681 |
| | | 30 | 932 | 988 | 1047 | 1107 | 1169 | 1234 | 1301 | 1371 | 1443 |
| YF17E1G-Q100 | Capacity (W) | 50 | 1099 | 1371 | 1704 | 2101 | 2567 | 3107 | 3726 | 4429 | 5221 |
| | | 40 | 1285 | 1614 | 2013 | 2489 | 3046 | 3689 | 4423 | 5252 | 6182 |
| | | 30 | 1468 | 1837 | 2289 | 2830 | 3463 | 4194 | 5028 | 5969 | 7023 |
| | Power (W) | 50 | 1699 | 1789 | 1881 | 1976 | 2073 | 2172 | 2275 | 2380 | 2489 |
| | | 40 | 1394 | 1477 | 1562 | 1649 | 1739 | 1832 | 1927 | 2026 | 2128 |
| | | 30 | 1180 | 1251 | 1325 | 1401 | 1480 | 1561 | 1646 | 1735 | 1826 |
| YF20E1G-Q100 | Capacity (W) | 50 | 1290 | 1611 | 2002 | 2468 | 3015 | 3650 | 4377 | 5203 | 6133 |
| | | 40 | 1510 | 1896 | 2365 | 2924 | 3578 | 4334 | 5196 | 6170 | 7262 |
| | | 30 | 1725 | 2158 | 2689 | 3324 | 4068 | 4927 | 5906 | 7012 | 8250 |
| | Power (W) | 50 | 1978 | 2083 | 2191 | 2301 | 2414 | 2530 | 2649 | 2771 | 2898 |
| | | 40 | 1624 | 1720 | 1819 | 1920 | 2025 | 2133 | 2244 | 2359 | 2477 |
| | | 30 | 1374 | 1457 | 1542 | 1631 | 1723 | 1818 | 1917 | 2020 | 2127 |
| YF25E1G-Q100 | Capacity (W) | 50 | 1721 | 2148 | 2669 | 3290 | 4021 | 4867 | 5837 | 6938 | 8178 |
| | | 40 | 2013 | 2527 | 3153 | 3899 | 4771 | 5778 | 6927 | 8227 | 9683 |
| | | 30 | 2300 | 2878 | 3586 | 4432 | 5424 | 6569 | 7875 | 9350 | 11000 |
| | Power (W) | 50 | 2592 | 2730 | 2870 | 3015 | 3163 | 3315 | 3471 | 3631 | 3797 |
| | | 40 | 2127 | 2254 | 2383 | 2516 | 2653 | 2795 | 2940 | 3091 | 3246 |
| | | 30 | 1800 | 1909 | 2021 | 2137 | 2257 | 2382 | 2512 | 2647 | 2786 |
| YF29E1G-Q100 | Capacity (W) | 50 | 1952 | 2437 | 3028 | 3733 | 4562 | 5522 | 6622 | 7872 | 9278 |
| | | 40 | 2284 | 2868 | 3578 | 4423 | 5413 | 6556 | 7860 | 9334 | 10987 |
| | | 30 | 2609 | 3265 | 4068 | 5029 | 6154 | 7454 | 8935 | 10608 | 12481 |
| | Power (W) | 50 | 2729 | 2874 | 3022 | 3174 | 3330 | 3490 | 3655 | 3824 | 3998 |
| | | 40 | 2240 | 2373 | 2509 | 2649 | 2794 | 2942 | 3096 | 3254 | 3418 |
| | | 30 | 1895 | 2010 | 2128 | 2250 | 2377 | 2508 | 2645 | 2787 | 2934 |
| YF35E1G-Q100 | Capacity (W) | 50 | 2316 | 2892 | 3593 | 4429 | 5412 | 6551 | 7857 | 9339 | 11008 |
| | | 40 | 2710 | 3402 | 4245 | 5248 | 6423 | 7778 | 9325 | 11074 | 13035 |
| | | 30 | 3096 | 3874 | 4827 | 5966 | 7302 | 8843 | 10601 | 12586 | 14808 |
| | Power (W) | 50 | 3137 | 3304 | 3475 | 3649 | 3829 | 4012 | 4201 | 4396 | 4596 |
| | | 40 | 2575 | 2728 | 2885 | 3046 | 3212 | 3383 | 3559 | 3741 | 3930 |
| | | 30 | 2179 | 2310 | 2446 | 2587 | 2733 | 2884 | 3041 | 3204 | 3373 |

Remark: Suction Temperature 20°C, No Subcooling

YF Series

Capacity

50Hz

R404A

| Model | C.T. (°C) | E.T. (°C) | | | | | | | | | |
|---------------------|--------------|-----------|------|------|-------|-------|-------|-------|-------|-------|-------|
| | | -40 | -35 | -30 | -25 | -20 | -15 | -10 | -5 | 0 | |
| YF41E1G-Q100 | Capacity (W) | 50 | 2713 | 3387 | 4209 | 5189 | 6340 | 7674 | 9204 | 10940 | 12895 |
| | | 40 | 3175 | 3986 | 4973 | 6148 | 7524 | 9112 | 10924 | 12973 | 15270 |
| | | 30 | 3627 | 4538 | 5655 | 6989 | 8553 | 10359 | 12419 | 14744 | 17346 |
| | Power (W) | 50 | 3647 | 3841 | 4039 | 4242 | 4450 | 4664 | 4884 | 5110 | 5343 |
| | | 40 | 2994 | 3171 | 3353 | 3540 | 3733 | 3932 | 4137 | 4349 | 4568 |
| | | 30 | 2533 | 2686 | 2844 | 3007 | 3176 | 3352 | 3535 | 3724 | 3921 |
| YF45E1G-Q100 | Capacity (W) | 50 | 2978 | 3718 | 4619 | 5695 | 6959 | 8423 | 10102 | 12007 | 14153 |
| | | 40 | 3485 | 4374 | 5458 | 6748 | 8258 | 10001 | 11990 | 14238 | 16759 |
| | | 30 | 3980 | 4980 | 6206 | 7671 | 9388 | 11370 | 13630 | 16182 | 19039 |
| | Power (W) | 50 | 3798 | 4000 | 4207 | 4418 | 4635 | 4858 | 5086 | 5322 | 5564 |
| | | 40 | 3118 | 3302 | 3492 | 3687 | 3888 | 4095 | 4309 | 4530 | 4757 |
| | | 30 | 2638 | 2797 | 2962 | 3132 | 3308 | 3491 | 3681 | 3878 | 4083 |
| YF56E1G-Q100 | Capacity (W) | 50 | 3476 | 4340 | 5392 | 6648 | 8123 | 9833 | 11793 | 14017 | 16523 |
| | | 40 | 4068 | 5107 | 6371 | 7877 | 9640 | 11675 | 13997 | 16622 | 19565 |
| | | 30 | 4647 | 5814 | 7245 | 8955 | 10959 | 13273 | 15912 | 18891 | 22226 |
| | Power (W) | 50 | 4996 | 5261 | 5533 | 5811 | 6096 | 6389 | 6690 | 7000 | 7318 |
| | | 40 | 4101 | 4344 | 4593 | 4850 | 5114 | 5386 | 5667 | 5958 | 6257 |
| | | 30 | 3470 | 3679 | 3895 | 4119 | 4351 | 4592 | 4842 | 5101 | 5371 |
| YF65E1G-Q100 | Capacity (W) | 50 | 4079 | 5093 | 6327 | 7801 | 9532 | 11538 | 13837 | 16448 | 19388 |
| | | 40 | 4773 | 5992 | 7476 | 9243 | 11311 | 13699 | 16424 | 19504 | 22957 |
| | | 30 | 5452 | 6822 | 8501 | 10508 | 12859 | 15574 | 18671 | 22167 | 26080 |
| | Power (W) | 50 | 5640 | 5940 | 6246 | 6560 | 6882 | 7213 | 7553 | 7902 | 8262 |
| | | 40 | 4629 | 4904 | 5185 | 5475 | 5773 | 6081 | 6398 | 6726 | 7064 |
| | | 30 | 3917 | 4153 | 4397 | 4650 | 4912 | 5184 | 5466 | 5759 | 6063 |
| YF72E1G-Q100 | Capacity (W) | 50 | 4731 | 5906 | 7338 | 9048 | 11055 | 13382 | 16049 | 19076 | 22486 |
| | | 40 | 5536 | 6950 | 8671 | 10720 | 13119 | 15888 | 19048 | 22621 | 26626 |
| | | 30 | 6324 | 7912 | 9860 | 12187 | 14914 | 18063 | 21654 | 25709 | 30247 |
| | Power (W) | 50 | 6366 | 6705 | 7051 | 7405 | 7769 | 8142 | 8525 | 8920 | 9326 |
| | | 40 | 5226 | 5535 | 5853 | 6180 | 6517 | 6864 | 7222 | 7592 | 7974 |
| | | 30 | 4422 | 4688 | 4964 | 5249 | 5545 | 5852 | 6170 | 6501 | 6844 |
| YF80E1G-Q100 | Capacity (W) | 50 | 5206 | 6547 | 8182 | 10133 | 12424 | 15080 | 18124 | 21579 | 25471 |
| | | 40 | 6125 | 7738 | 9702 | 12042 | 14780 | 17940 | 21547 | 25625 | 30196 |
| | | 30 | 7024 | 8837 | 11060 | 13716 | 16829 | 20423 | 24522 | 29149 | 34329 |
| | Power (W) | 50 | 7185 | 7566 | 7957 | 8357 | 8767 | 9189 | 9621 | 10067 | 10525 |
| | | 40 | 5897 | 6247 | 6606 | 6975 | 7355 | 7746 | 8151 | 8568 | 8999 |
| | | 30 | 4990 | 5291 | 5602 | 5924 | 6258 | 6604 | 6963 | 7336 | 7724 |

Remark: Suction Temperature 20°C, No Subcooling

YF Series

Capacity

50Hz R404A

| Model | C.T. (°C) | E.T. (°C) | | | | | | | | | |
|----------------------|-----------------|-----------|-------|-------|-------|-------|-------|-------|-------|-------|-------|
| | | -40 | -35 | -30 | -25 | -20 | -15 | -10 | -5 | 0 | |
| YF135E1G-V100 | Capacity (W) | 50 | 9900 | 12731 | 15801 | 21509 | 26875 | 32044 | 37161 | 42371 | 47819 |
| | | 40 | 11930 | 16431 | 20864 | 25375 | 30108 | 35209 | 40822 | 47093 | 54166 |
| | | 30 | 15263 | 18461 | 22157 | 26494 | 31618 | 37674 | 44808 | 53163 | 62886 |
| | Power (W) | 50 | 12330 | 13021 | 13709 | 15519 | 16911 | 17870 | 18381 | 18426 | 17992 |
| | | 40 | 9763 | 10978 | 12052 | 12969 | 13714 | 14271 | 14625 | 14759 | 14659 |
| | | 30 | 9123 | 9458 | 9897 | 10425 | 11026 | 11684 | 12385 | 13111 | 13848 |
| YF170E1G-V100 | Capacity (W) | 50 | 13589 | 16757 | 21137 | 25585 | 30537 | 36031 | 42107 | 48805 | 56164 |
| | | 40 | 15139 | 18761 | 22887 | 27555 | 32806 | 38678 | 45211 | 52445 | 60418 |
| | | 30 | 16038 | 19763 | 24069 | 28998 | 34587 | 40877 | 47907 | 55716 | 64344 |
| | Power (W) | 50 | 13532 | 14306 | 14765 | 15564 | 16524 | 17499 | 18346 | 18919 | 19074 |
| | | 40 | 11801 | 11878 | 12388 | 13187 | 14131 | 15074 | 15872 | 16381 | 16456 |
| | | 30 | 9776 | 9964 | 10569 | 11447 | 12453 | 13443 | 14273 | 14797 | 14871 |
| YF200E1G-V100 | Capacity (W) | 50 | 16006 | 19738 | 24896 | 30136 | 35969 | 42440 | 49597 | 57487 | 66155 |
| | | 40 | 17832 | 22099 | 26958 | 32457 | 38641 | 45558 | 53253 | 61774 | 71166 |
| | | 30 | 18891 | 23278 | 28351 | 34156 | 40739 | 48148 | 56428 | 65627 | 75790 |
| | Power (W) | 50 | 15939 | 16851 | 17391 | 18333 | 19464 | 20612 | 21609 | 22284 | 22467 |
| | | 40 | 13900 | 13991 | 14592 | 15533 | 16644 | 17755 | 18696 | 19295 | 19384 |
| | | 30 | 11515 | 11736 | 12449 | 13483 | 14668 | 15835 | 16811 | 17429 | 17516 |

Remark:

| | |
|--|-------------------------|
| | RG 4.4°C, No Subcooling |
| | RG 20°C, No Subcooling |

YSF Series

Capacity Vapor Injection

50Hz

R404A

| Model | C.T. (°C) | E.T. (°C) | | | | | | | | | | | |
|---------------|-----------------|-----------|------|-------|-------|-------|-------|-------|-------|-------|-------|-------|-------|
| | | -40 | -35 | -30 | -25 | -20 | -15 | -10 | -5 | 0 | 5 | 10 | |
| YSF60E1G-V100 | Capacity (W) | 60 | | | | | | 9439 | 11041 | 12843 | 14878 | 17178 | 19774 |
| | | 55 | 3794 | 4908 | 6083 | 7352 | 8746 | 10298 | 12038 | 13999 | 16213 | 18711 | 21525 |
| | | 50 | 4204 | 5358 | 6593 | 7941 | 9435 | 11105 | 12984 | 15104 | 17495 | 20192 | 23224 |
| | | 45 | 4572 | 5765 | 7060 | 8487 | 10079 | 11868 | 13886 | 16163 | 18733 | 21626 | 24876 |
| | | 40 | 4906 | 6138 | 7491 | 8997 | 10688 | 12595 | 14750 | 17185 | 19932 | 23023 | 26489 |
| | | 35 | 5212 | 6483 | 7895 | 9479 | 11268 | 13292 | 15585 | 18177 | 21101 | 24388 | 28071 |
| | | 30 | 5498 | 6808 | 8277 | 9939 | 11825 | 13967 | 16397 | 19146 | 22246 | 25730 | 29628 |
| | 25 | 5772 | 7119 | 8646 | 10385 | 12368 | 14627 | 17193 | 20099 | 23375 | 27054 | 31168 | |
| | Power (W) | 60 | | | | | | | | 8079 | 8467 | 8910 | 9411 |
| | | 55 | 5908 | 6025 | 6160 | 6317 | 6499 | 6712 | 6960 | 7248 | 7579 | 7958 | 8391 |
| | | 50 | 5306 | 5414 | 5532 | 5666 | 5821 | 5999 | 6207 | 6448 | 6726 | 7047 | 7414 |
| | | 45 | 4727 | 4829 | 4936 | 5052 | 5182 | 5331 | 5502 | 5700 | 5930 | 6196 | 6502 |
| | | 40 | 4193 | 4293 | 4392 | 4495 | 4605 | 4727 | 4866 | 5026 | 5212 | 5427 | 5677 |
| | | 35 | 3724 | 3827 | 3923 | 4016 | 4110 | 4211 | 4322 | 4448 | 4593 | 4762 | 4960 |
| 30 | | 3343 | 3453 | 3549 | 3637 | 3720 | 3803 | 3890 | 3986 | 4096 | 4223 | 4372 | |
| YSF65E1G-V100 | Capacity (W) | 60 | | | | | | 10050 | 11755 | 13673 | 15840 | 18289 | 21053 |
| | | 55 | 4039 | 5225 | 6477 | 7828 | 9312 | 10964 | 12817 | 14905 | 17261 | 19921 | 22917 |
| | | 50 | 4476 | 5704 | 7019 | 8455 | 10045 | 11823 | 13824 | 16080 | 18627 | 21497 | 24726 |
| | | 45 | 4868 | 6138 | 7516 | 9036 | 10731 | 12636 | 14784 | 17209 | 19944 | 23025 | 26485 |
| | | 40 | 5223 | 6535 | 7976 | 9579 | 11379 | 13410 | 15704 | 18297 | 21221 | 24512 | 28202 |
| | | 35 | 5549 | 6903 | 8406 | 10092 | 11996 | 14152 | 16593 | 19353 | 22466 | 25966 | 29886 |
| | | 30 | 5854 | 7248 | 8813 | 10582 | 12590 | 14871 | 17457 | 20384 | 23685 | 27394 | 31545 |
| | 25 | 6145 | 7579 | 9205 | 11057 | 13168 | 15573 | 18305 | 21399 | 24887 | 28804 | 33184 | |
| | Power (W) | 60 | | | | | | | | 8601 | 9015 | 9486 | 10020 |
| | | 55 | 6290 | 6415 | 6559 | 6725 | 6919 | 7146 | 7410 | 7716 | 8069 | 8473 | 8933 |
| | | 50 | 5650 | 5764 | 5890 | 6033 | 6197 | 6387 | 6608 | 6865 | 7161 | 7502 | 7893 |
| | | 45 | 5033 | 5141 | 5255 | 5379 | 5517 | 5675 | 5858 | 6069 | 6313 | 6596 | 6923 |
| | | 40 | 4464 | 4571 | 4676 | 4785 | 4903 | 5033 | 5181 | 5351 | 5549 | 5778 | 6044 |
| | | 35 | 3965 | 4075 | 4177 | 4275 | 4376 | 4483 | 4601 | 4736 | 4890 | 5070 | 5280 |
| 30 | | 3559 | 3676 | 3779 | 3872 | 3960 | 4049 | 4142 | 4244 | 4361 | 4496 | 4655 | |
| 25 | 3269 | 3398 | 3506 | 3598 | 3679 | 3753 | 3825 | 3900 | 3983 | 4078 | 4189 | | |
| YSF75E1G-V100 | Capacity (W) | 60 | | | | | | 11881 | 13897 | 16165 | 18727 | 21622 | 24889 |
| | | 55 | 4775 | 6177 | 7657 | 9254 | 11009 | 12962 | 15152 | 17621 | 20407 | 23552 | 27094 |
| | | 50 | 5291 | 6744 | 8298 | 9996 | 11875 | 13978 | 16343 | 19011 | 22022 | 25415 | 29232 |
| | | 45 | 5755 | 7257 | 8886 | 10683 | 12687 | 14939 | 17478 | 20345 | 23579 | 27221 | 31311 |
| | | 40 | 6175 | 7726 | 9430 | 11325 | 13453 | 15853 | 18566 | 21631 | 25089 | 28979 | 33342 |
| | | 35 | 6561 | 8160 | 9937 | 11931 | 14183 | 16731 | 19617 | 22880 | 26560 | 30698 | 35333 |
| | | 30 | 6921 | 8569 | 10419 | 12511 | 14885 | 17581 | 20639 | 24099 | 28001 | 32386 | 37293 |
| | 25 | 7265 | 8961 | 10883 | 13072 | 15568 | 18411 | 21641 | 25298 | 29422 | 34054 | 39232 | |
| | Power (W) | 60 | | | | | | | | 10068 | 10552 | 11104 | 11728 |
| | | 55 | 7363 | 7509 | 7677 | 7872 | 8099 | 8365 | 8674 | 9032 | 9445 | 9918 | 10457 |
| | | 50 | 6613 | 6747 | 6895 | 7062 | 7254 | 7477 | 7735 | 8035 | 8382 | 8782 | 9239 |
| | | 45 | 5892 | 6018 | 6151 | 6296 | 6458 | 6643 | 6856 | 7104 | 7390 | 7721 | 8103 |
| | | 40 | 5226 | 5350 | 5474 | 5601 | 5739 | 5891 | 6065 | 6264 | 6495 | 6764 | 7075 |
| | | 35 | 4642 | 4770 | 4889 | 5005 | 5122 | 5248 | 5386 | 5543 | 5724 | 5935 | 6181 |
| 30 | | 4166 | 4303 | 4423 | 4532 | 4636 | 4739 | 4848 | 4968 | 5104 | 5263 | 5448 | |
| 25 | 3827 | 3977 | 4104 | 4211 | 4306 | 4393 | 4477 | 4565 | 4662 | 4773 | 4904 | | |

Remark: Suction Temperature 20°C, No Subcooling

YSF Series

Capacity Vapor Injection

50Hz
R404A

| Model | C.T. (°C) | E.T. (°C) | | | | | | | | | | | |
|---------------|-----------------|-----------|-------|-------|-------|-------|-------|-------|-------|-------|-------|-------|-------|
| | | -40 | -35 | -30 | -25 | -20 | -15 | -10 | -5 | 0 | 5 | 10 | |
| YSF85E1G-V100 | Capacity (W) | 60 | | | | | | 13666 | 15984 | 18593 | 21540 | 24869 | 28628 |
| | | 55 | 5493 | 7105 | 8807 | 10644 | 12663 | 14909 | 17428 | 20267 | 23472 | 27089 | 31163 |
| | | 50 | 6086 | 7757 | 9545 | 11497 | 13659 | 16077 | 18798 | 21866 | 25329 | 29232 | 33622 |
| | | 45 | 6619 | 8347 | 10221 | 12287 | 14593 | 17182 | 20103 | 23400 | 27121 | 31310 | 36014 |
| | | 40 | 7102 | 8887 | 10846 | 13026 | 15474 | 18235 | 21355 | 24880 | 28857 | 33332 | 38350 |
| | | 35 | 7546 | 9386 | 11430 | 13723 | 16313 | 19244 | 22563 | 26316 | 30549 | 35309 | 40640 |
| | | 30 | 7960 | 9856 | 11984 | 14390 | 17120 | 20221 | 23739 | 27719 | 32207 | 37251 | 42895 |
| | 25 | 8356 | 10306 | 12518 | 15036 | 17907 | 21177 | 24892 | 29098 | 33842 | 39168 | 45124 | |
| | Power (W) | 60 | | | | | | | 11580 | 12137 | 12771 | 13490 | |
| | | 55 | 8469 | 8637 | 8830 | 9054 | 9316 | 9621 | 9977 | 10389 | 10864 | 11408 | 12027 |
| | | 50 | 7606 | 7760 | 7930 | 8123 | 8344 | 8600 | 8897 | 9242 | 9641 | 10101 | 10627 |
| | | 45 | 6776 | 6922 | 7075 | 7242 | 7428 | 7641 | 7886 | 8171 | 8500 | 8881 | 9320 |
| | | 40 | 6010 | 6154 | 6296 | 6443 | 6601 | 6776 | 6975 | 7205 | 7471 | 7779 | 8137 |
| | | 35 | 5339 | 5486 | 5623 | 5756 | 5892 | 6036 | 6195 | 6376 | 6584 | 6826 | 7109 |
| 30 | | 4792 | 4949 | 5088 | 5213 | 5332 | 5451 | 5576 | 5714 | 5871 | 6053 | 6267 | |
| YSF90E1G-V100 | Capacity (W) | 60 | | | | | | 15450 | 18071 | 21021 | 24352 | 28117 | 32366 |
| | | 55 | 6210 | 8033 | 9957 | 12034 | 14316 | 16855 | 19704 | 22914 | 26537 | 30626 | 35233 |
| | | 50 | 6881 | 8769 | 10791 | 12998 | 15443 | 18177 | 21252 | 24722 | 28637 | 33050 | 38013 |
| | | 45 | 7484 | 9437 | 11556 | 13892 | 16498 | 19426 | 22728 | 26456 | 30662 | 35399 | 40717 |
| | | 40 | 8030 | 10047 | 12262 | 14727 | 17494 | 20616 | 24143 | 28129 | 32626 | 37684 | 43358 |
| | | 35 | 8531 | 10612 | 12922 | 15516 | 18443 | 21757 | 25509 | 29753 | 34539 | 39919 | 45947 |
| | | 30 | 9000 | 11143 | 13549 | 16269 | 19356 | 22862 | 26838 | 31338 | 36413 | 42115 | 48496 |
| | 25 | 9447 | 11652 | 14152 | 16999 | 20245 | 23942 | 28142 | 32898 | 38261 | 44283 | 51017 | |
| | Power (W) | 60 | | | | | | | 12963 | 13586 | 14296 | 15101 | |
| | | 55 | 9480 | 9668 | 9884 | 10135 | 10428 | 10770 | 11168 | 11629 | 12161 | 12770 | 13463 |
| | | 50 | 8514 | 8687 | 8877 | 9092 | 9340 | 9626 | 9959 | 10346 | 10792 | 11307 | 11896 |
| | | 45 | 7586 | 7749 | 7920 | 8106 | 8315 | 8553 | 8828 | 9146 | 9515 | 9942 | 10433 |
| | | 40 | 6728 | 6889 | 7048 | 7212 | 7389 | 7585 | 7808 | 8065 | 8363 | 8708 | 9109 |
| | | 35 | 5976 | 6141 | 6294 | 6443 | 6595 | 6757 | 6935 | 7137 | 7370 | 7641 | 7958 |
| 30 | | 5364 | 5540 | 5695 | 5835 | 5969 | 6102 | 6242 | 6396 | 6572 | 6776 | 7015 | |
| 25 | 4927 | 5121 | 5284 | 5422 | 5544 | 5656 | 5765 | 5878 | 6002 | 6145 | 6314 | | |

Remark: Suction Temperature 20°C, No Subcooling

YSF Series

Capacity Vapor Injection

50Hz

R404A

| Model | C.T. (°C) | E.T. (°C) | | | | | | | | | | | | |
|----------------|-----------------|-----------|-------|-------|-------|-------|-------|-------|-------|-------|-------|-------|--|--|
| | | -40 | -35 | -30 | -25 | -20 | -15 | -10 | -5 | 0 | 5 | 10 | | |
| YSF100E1G-V100 | Capacity (W) | 60 | | | | | | | 16108 | 18840 | 21916 | 25389 | | |
| | | 55 | 6474 | 8375 | 10381 | 12546 | 14925 | 17573 | 20542 | 23889 | 27667 | | | |
| | | 50 | 7174 | 9143 | 11250 | 13551 | 16100 | 18950 | 22157 | 25774 | 29855 | | | |
| | | 45 | 7802 | 9838 | 12047 | 14483 | 17200 | 20253 | 23695 | 27582 | 31967 | | | |
| | | 40 | 8372 | 10475 | 12784 | 15354 | 18239 | 21493 | 25171 | 29326 | 34014 | | | |
| | | 35 | 8894 | 11063 | 13472 | 16176 | 19228 | 22683 | 26595 | 31019 | 36008 | | | |
| | | 30 | 9383 | 11617 | 14125 | 16961 | 20180 | 23835 | 27981 | 32672 | 37962 | | | |
| | 25 | 9849 | 12148 | 14754 | 17722 | 21106 | 24961 | 29340 | 34298 | 39889 | | | | |
| | Power (W) | 60 | | | | | | | | | 13514 | 14164 | | |
| | | 55 | 9883 | 10080 | 10305 | 10567 | 10872 | 11228 | 11643 | 12124 | 12678 | | | |
| | | 50 | 8877 | 9056 | 9255 | 9479 | 9737 | 10036 | 10383 | 10786 | 11252 | | | |
| | | 45 | 7908 | 8078 | 8257 | 8451 | 8669 | 8917 | 9204 | 9535 | 9920 | | | |
| | | 40 | 7014 | 7182 | 7347 | 7519 | 7703 | 7908 | 8140 | 8408 | 8719 | | | |
| | | 35 | 6230 | 6402 | 6562 | 6718 | 6876 | 7044 | 7230 | 7441 | 7684 | | | |
| 30 | | 5593 | 5776 | 5937 | 6084 | 6223 | 6362 | 6508 | 6669 | 6852 | | | | |
| YSF125E1G-V100 | Capacity (W) | 60 | | | | | | 19918 | 23297 | 27099 | 31394 | | | |
| | | 55 | 8006 | 10356 | 12836 | 15513 | 18455 | 21729 | 25401 | 29539 | 34211 | | | |
| | | 50 | 8871 | 11305 | 13911 | 16757 | 19908 | 23432 | 27397 | 31870 | 36917 | | | |
| | | 45 | 9648 | 12165 | 14897 | 17909 | 21269 | 25043 | 29300 | 34106 | 39528 | | | |
| | | 40 | 10352 | 12952 | 15808 | 18985 | 22553 | 26577 | 31124 | 36263 | 42059 | | | |
| | | 35 | 10998 | 13680 | 16659 | 20002 | 23776 | 28048 | 32885 | 38355 | 44525 | | | |
| | | 30 | 11602 | 14365 | 17466 | 20973 | 24953 | 29472 | 34599 | 40400 | 46942 | | | |
| | 25 | 12179 | 15022 | 18244 | 21914 | 26099 | 30865 | 36279 | 42410 | 49324 | | | | |
| | Power (W) | 60 | | | | | | | | | 16711 | 17514 | | |
| | | 55 | 12221 | 12464 | 12742 | 13066 | 13443 | 13884 | 14397 | 14992 | 15677 | | | |
| | | 50 | 10976 | 11198 | 11444 | 11721 | 12040 | 12410 | 12839 | 13337 | 13913 | | | |
| | | 45 | 9779 | 9989 | 10210 | 10450 | 10719 | 11026 | 11380 | 11791 | 12266 | | | |
| | | 40 | 8673 | 8880 | 9085 | 9297 | 9525 | 9778 | 10066 | 10397 | 10781 | | | |
| | | 35 | 7704 | 7917 | 8114 | 8307 | 8502 | 8710 | 8940 | 9201 | 9501 | | | |
| 30 | | 6915 | 7142 | 7342 | 7523 | 7695 | 7866 | 8047 | 8246 | 8472 | | | | |
| 25 | 6352 | 6602 | 6811 | 6990 | 7147 | 7291 | 7431 | 7577 | 7738 | | | | | |

Remark: Suction Temperature 20°C, No Subcooling

YF Series

Capacity

50Hz

R448 R449A

| Model | C.T. (°C) | E.T. (°C) | | | | | | | | | |
|--------------|-----------------|-----------|------|------|------|------|------|------|------|-------|-------|
| | | -40 | -35 | -30 | -25 | -20 | -15 | -10 | -5 | 0 | |
| YF13E2G-Q102 | Capacity (W) | 50 | 863 | 1127 | 1429 | 1782 | 2196 | 2686 | 3263 | 3939 | 4726 |
| | | 40 | 997 | 1276 | 1605 | 1997 | 2463 | 3017 | 3670 | 4435 | 5324 |
| | | 30 | 1106 | 1397 | 1750 | 2179 | 2695 | 3311 | 4038 | 4889 | 5877 |
| | Power (W) | 50 | 1554 | 1577 | 1599 | 1622 | 1647 | 1676 | 1710 | 1751 | 1800 |
| | | 40 | 1161 | 1209 | 1253 | 1294 | 1333 | 1372 | 1412 | 1455 | 1503 |
| | | 30 | 944 | 997 | 1041 | 1079 | 1110 | 1138 | 1163 | 1187 | 1212 |
| YF17E2G-Q102 | Capacity (W) | 50 | 1089 | 1422 | 1803 | 2247 | 2770 | 3388 | 4115 | 4968 | 5961 |
| | | 40 | 1257 | 1609 | 2024 | 2518 | 3107 | 3805 | 4629 | 5594 | 6715 |
| | | 30 | 1395 | 1762 | 2208 | 2748 | 3399 | 4176 | 5093 | 6167 | 7412 |
| | Power (W) | 50 | 1959 | 1989 | 2017 | 2046 | 2078 | 2114 | 2157 | 2208 | 2271 |
| | | 40 | 1464 | 1525 | 1581 | 1632 | 1681 | 1730 | 1781 | 1835 | 1895 |
| | | 30 | 1190 | 1257 | 1314 | 1361 | 1400 | 1435 | 1467 | 1498 | 1529 |
| YF20E2G-Q102 | Capacity (W) | 50 | 1208 | 1577 | 2000 | 2493 | 3074 | 3759 | 4566 | 5512 | 6614 |
| | | 40 | 1395 | 1785 | 2246 | 2794 | 3447 | 4222 | 5136 | 6206 | 7450 |
| | | 30 | 1547 | 1954 | 2449 | 3049 | 3772 | 4633 | 5651 | 6842 | 8224 |
| | Power (W) | 50 | 2174 | 2207 | 2238 | 2270 | 2305 | 2346 | 2393 | 2450 | 2519 |
| | | 40 | 1624 | 1693 | 1754 | 1811 | 1865 | 1920 | 1976 | 2036 | 2103 |
| | | 30 | 1321 | 1395 | 1457 | 1510 | 1554 | 1592 | 1628 | 1662 | 1697 |
| YF25E2G-Q100 | Capacity (W) | 50 | 1503 | 1963 | 2489 | 3103 | 3825 | 4678 | 5683 | 6860 | 8232 |
| | | 40 | 1736 | 2222 | 2795 | 3477 | 4290 | 5255 | 6393 | 7725 | 9273 |
| | | 30 | 1926 | 2433 | 3049 | 3795 | 4694 | 5766 | 7033 | 8516 | 10236 |
| | Power (W) | 50 | 2706 | 2747 | 2786 | 2826 | 2869 | 2919 | 2979 | 3050 | 3136 |
| | | 40 | 2021 | 2107 | 2183 | 2254 | 2322 | 2389 | 2459 | 2534 | 2617 |
| | | 30 | 1644 | 1736 | 1814 | 1879 | 1934 | 1982 | 2026 | 2068 | 2112 |
| YF29E2G-Q100 | Capacity (W) | 50 | 1885 | 2326 | 2860 | 3509 | 4295 | 5241 | 6369 | 7700 | 9258 |
| | | 40 | 2027 | 2565 | 3203 | 3964 | 4869 | 5941 | 7203 | 8675 | 10381 |
| | | 30 | 2066 | 2719 | 3479 | 4369 | 5411 | 6627 | 8039 | 9670 | 11542 |
| | Power (W) | 50 | 2603 | 2696 | 2806 | 2930 | 3064 | 3204 | 3347 | 3490 | 3630 |
| | | 40 | 2096 | 2192 | 2300 | 2418 | 2543 | 2670 | 2797 | 2920 | 3035 |
| | | 30 | 1766 | 1857 | 1956 | 2062 | 2170 | 2278 | 2381 | 2476 | 2561 |
| YF35E2G-Q100 | Capacity (W) | 50 | 2316 | 2858 | 3514 | 4311 | 5277 | 6439 | 7824 | 9461 | 11375 |
| | | 40 | 2490 | 3152 | 3936 | 4870 | 5983 | 7300 | 8849 | 10659 | 12755 |
| | | 30 | 2538 | 3340 | 4274 | 5368 | 6648 | 8142 | 9877 | 11881 | 14180 |
| | Power (W) | 50 | 3198 | 3313 | 3448 | 3600 | 3764 | 3936 | 4112 | 4288 | 4460 |
| | | 40 | 2576 | 2693 | 2826 | 2971 | 3124 | 3281 | 3436 | 3587 | 3729 |
| | | 30 | 2170 | 2281 | 2404 | 2534 | 2667 | 2799 | 2925 | 3042 | 3146 |
| YF13E1G-Q100 | Capacity (W) | 50 | 858 | 1125 | 1424 | 1770 | 2176 | 2658 | 3228 | 3901 | 4691 |
| | | 40 | 996 | 1276 | 1602 | 1988 | 2449 | 2998 | 3650 | 4418 | 5318 |
| | | 30 | 1119 | 1409 | 1759 | 2183 | 2695 | 3309 | 4040 | 4901 | 5907 |
| | Power (W) | 50 | 1434 | 1547 | 1631 | 1694 | 1739 | 1775 | 1805 | 1836 | 1874 |
| | | 40 | 1100 | 1205 | 1284 | 1343 | 1388 | 1424 | 1456 | 1492 | 1536 |
| | | 30 | 874 | 970 | 1041 | 1094 | 1134 | 1168 | 1201 | 1239 | 1287 |

Remark: Suction Temperature 20°C, No Subcooling

YF Series

Capacity

50Hz

R448 R449A

| Model | C.T. (°C) | E.T. (°C) | | | | | | | | | |
|---------------------|--------------|-----------|------|------|------|------|------|-------|-------|-------|-------|
| | | -40 | -35 | -30 | -25 | -20 | -15 | -10 | -5 | 0 | |
| YF17E1G-Q100 | Capacity (w) | 50 | 1082 | 1419 | 1796 | 2233 | 2745 | 3352 | 4071 | 4920 | 5916 |
| | | 40 | 1256 | 1609 | 2020 | 2507 | 3088 | 3781 | 4603 | 5573 | 6707 |
| | | 30 | 1411 | 1777 | 2218 | 2753 | 3399 | 4174 | 5095 | 6182 | 7450 |
| | Power (w) | 50 | 1808 | 1951 | 2057 | 2136 | 2194 | 2238 | 2277 | 2316 | 2364 |
| | | 40 | 1388 | 1520 | 1620 | 1694 | 1750 | 1795 | 1837 | 1882 | 1938 |
| | | 30 | 1103 | 1223 | 1313 | 1379 | 1430 | 1473 | 1515 | 1562 | 1623 |
| YF20E1G-Q100 | Capacity (w) | 50 | 1201 | 1574 | 1993 | 2477 | 3046 | 3719 | 4517 | 5458 | 6564 |
| | | 40 | 1393 | 1785 | 2241 | 2782 | 3427 | 4195 | 5107 | 6183 | 7442 |
| | | 30 | 1566 | 1972 | 2461 | 3055 | 3771 | 4631 | 5653 | 6859 | 8266 |
| | Power (w) | 50 | 2006 | 2164 | 2283 | 2370 | 2434 | 2483 | 2526 | 2570 | 2623 |
| | | 40 | 1540 | 1687 | 1797 | 1880 | 1942 | 1992 | 2038 | 2088 | 2150 |
| | | 30 | 1224 | 1357 | 1456 | 1531 | 1587 | 1634 | 1680 | 1733 | 1801 |
| YF25E1G-Q100 | Capacity (w) | 50 | 1495 | 1960 | 2481 | 3083 | 3791 | 4629 | 5622 | 6794 | 8170 |
| | | 40 | 1734 | 2222 | 2790 | 3463 | 4265 | 5222 | 6357 | 7696 | 9262 |
| | | 30 | 1949 | 2454 | 3064 | 3802 | 4694 | 5764 | 7036 | 8536 | 10288 |
| | Power (w) | 50 | 2497 | 2694 | 2841 | 2950 | 3030 | 3091 | 3144 | 3198 | 3264 |
| | | 40 | 1916 | 2099 | 2237 | 2340 | 2417 | 2479 | 2537 | 2599 | 2676 |
| | | 30 | 1523 | 1689 | 1813 | 1905 | 1975 | 2034 | 2092 | 2157 | 2242 |
| YF29E1G-Q100 | Capacity (w) | 50 | 1698 | 2237 | 2832 | 3514 | 4315 | 5267 | 6403 | 7754 | 9352 |
| | | 40 | 1972 | 2559 | 3221 | 3990 | 4897 | 5975 | 7255 | 8770 | 10552 |
| | | 30 | 2231 | 2839 | 3542 | 4371 | 5357 | 6534 | 7932 | 9585 | 11523 |
| | Power (w) | 50 | 2930 | 2884 | 2909 | 2986 | 3099 | 3230 | 3360 | 3473 | 3551 |
| | | 40 | 2212 | 2214 | 2274 | 2374 | 2496 | 2623 | 2736 | 2819 | 2853 |
| | | 30 | 1756 | 1788 | 1864 | 1967 | 2079 | 2183 | 2260 | 2293 | 2265 |
| YF35E1G-Q100 | Capacity (w) | 50 | 2086 | 2749 | 3479 | 4317 | 5301 | 6472 | 7867 | 9527 | 11490 |
| | | 40 | 2423 | 3144 | 3958 | 4902 | 6017 | 7341 | 8914 | 10775 | 12964 |
| | | 30 | 2741 | 3489 | 4352 | 5370 | 6582 | 8028 | 9746 | 11776 | 14157 |
| | Power (w) | 50 | 3600 | 3543 | 3574 | 3669 | 3807 | 3968 | 4128 | 4267 | 4363 |
| | | 40 | 2717 | 2721 | 2794 | 2917 | 3067 | 3222 | 3361 | 3463 | 3505 |
| | | 30 | 2157 | 2197 | 2291 | 2417 | 2555 | 2682 | 2777 | 2817 | 2782 |
| YF41E1G-Q100 | Capacity (w) | 50 | 2462 | 3244 | 4106 | 5094 | 6256 | 7637 | 9283 | 11242 | 13559 |
| | | 40 | 2859 | 3711 | 4670 | 5785 | 7100 | 8663 | 10519 | 12715 | 15299 |
| | | 30 | 3234 | 4117 | 5136 | 6337 | 7767 | 9473 | 11501 | 13896 | 16707 |
| | Power (w) | 50 | 4248 | 4181 | 4217 | 4329 | 4493 | 4682 | 4872 | 5036 | 5149 |
| | | 40 | 3207 | 3211 | 3298 | 3442 | 3619 | 3802 | 3967 | 4087 | 4136 |
| | | 30 | 2545 | 2592 | 2703 | 2852 | 3015 | 3165 | 3276 | 3325 | 3284 |
| YF45E1G-Q100 | Capacity (w) | 50 | 2705 | 3564 | 4511 | 5597 | 6873 | 8390 | 10200 | 12352 | 14897 |
| | | 40 | 3141 | 4077 | 5131 | 6356 | 7801 | 9517 | 11557 | 13970 | 16808 |
| | | 30 | 3553 | 4523 | 5642 | 6962 | 8534 | 10408 | 12636 | 15268 | 18355 |
| | Power (w) | 50 | 4667 | 4594 | 4633 | 4757 | 4936 | 5144 | 5353 | 5533 | 5657 |
| | | 40 | 3523 | 3527 | 3623 | 3782 | 3976 | 4178 | 4358 | 4490 | 4544 |
| | | 30 | 2796 | 2848 | 2970 | 3134 | 3312 | 3477 | 3600 | 3653 | 3608 |

Remark: Suction Temperature 20°C, No Subcooling

YF Series

Capacity

50Hz R452A

| Model | C.T. (°C) | E.T. (°C) | | | | | | | | | |
|--------------|-----------------|-----------|------|------|------|------|------|------|-------|-------|-------|
| | | -40 | -35 | -30 | -25 | -20 | -15 | -10 | -5 | 0 | |
| YF13E2G-Q102 | Capacity (W) | 50 | 860 | 1074 | 1334 | 1645 | 2010 | 2433 | 2918 | 3469 | 4089 |
| | | 40 | 1007 | 1264 | 1577 | 1949 | 2386 | 2889 | 3464 | 4113 | 4842 |
| | | 30 | 1150 | 1439 | 1793 | 2216 | 2712 | 3285 | 3938 | 4675 | 5500 |
| | Power (W) | 50 | 1381 | 1451 | 1522 | 1595 | 1670 | 1747 | 1826 | 1908 | 1992 |
| | | 40 | 1147 | 1211 | 1277 | 1344 | 1414 | 1485 | 1559 | 1635 | 1714 |
| | | 30 | 982 | 1037 | 1094 | 1153 | 1214 | 1278 | 1343 | 1411 | 1482 |
| YF17E2G-Q102 | Capacity (W) | 50 | 1099 | 1371 | 1704 | 2101 | 2567 | 3107 | 3726 | 4429 | 5221 |
| | | 40 | 1285 | 1614 | 2013 | 2489 | 3046 | 3689 | 4423 | 5252 | 6182 |
| | | 30 | 1468 | 1837 | 2289 | 2830 | 3463 | 4194 | 5028 | 5969 | 7023 |
| | Power (W) | 50 | 1747 | 1835 | 1926 | 2018 | 2113 | 2211 | 2311 | 2414 | 2520 |
| | | 40 | 1451 | 1532 | 1615 | 1701 | 1789 | 1879 | 1973 | 2069 | 2169 |
| | | 30 | 1243 | 1313 | 1385 | 1459 | 1536 | 1617 | 1700 | 1786 | 1876 |
| YF20E2G-Q102 | Capacity (W) | 50 | 1290 | 1611 | 2002 | 2468 | 3015 | 3650 | 4377 | 5203 | 6133 |
| | | 40 | 1510 | 1896 | 2365 | 2924 | 3578 | 4334 | 5196 | 6170 | 7262 |
| | | 30 | 1725 | 2158 | 2689 | 3324 | 4068 | 4927 | 5906 | 7012 | 8250 |
| | Power (W) | 50 | 2052 | 2156 | 2262 | 2371 | 2483 | 2597 | 2715 | 2836 | 2960 |
| | | 40 | 1705 | 1800 | 1898 | 1998 | 2101 | 2208 | 2318 | 2431 | 2548 |
| | | 30 | 1460 | 1542 | 1627 | 1714 | 1805 | 1899 | 1997 | 2098 | 2204 |
| YF25E2G-Q100 | Capacity (W) | 50 | 1721 | 2148 | 2669 | 3290 | 4021 | 4867 | 5837 | 6938 | 8178 |
| | | 40 | 2013 | 2527 | 3153 | 3899 | 4771 | 5778 | 6927 | 8227 | 9683 |
| | | 30 | 2300 | 2878 | 3586 | 4432 | 5424 | 6569 | 7875 | 9350 | 11000 |
| | Power (W) | 50 | 2490 | 2616 | 2744 | 2876 | 3012 | 3151 | 3293 | 3440 | 3591 |
| | | 40 | 2068 | 2184 | 2302 | 2424 | 2549 | 2678 | 2811 | 2949 | 3091 |
| | | 30 | 1772 | 1871 | 1973 | 2079 | 2190 | 2304 | 2422 | 2545 | 2673 |
| YF29E2G-Q100 | Capacity (W) | 50 | 1952 | 2437 | 3028 | 3733 | 4562 | 5522 | 6622 | 7872 | 9278 |
| | | 40 | 2284 | 2868 | 3578 | 4423 | 5413 | 6556 | 7860 | 9334 | 10987 |
| | | 30 | 2609 | 3265 | 4069 | 5029 | 6154 | 7454 | 8935 | 10608 | 12481 |
| | Power (W) | 50 | 2825 | 2968 | 3114 | 3264 | 3417 | 3575 | 3737 | 3903 | 4075 |
| | | 40 | 2347 | 2478 | 2612 | 2750 | 2892 | 3039 | 3190 | 3346 | 3507 |
| | | 30 | 2010 | 2123 | 2239 | 2359 | 2484 | 2614 | 2748 | 2888 | 3033 |
| YF35E2G-Q100 | Capacity (W) | 50 | 2316 | 2892 | 3593 | 4429 | 5412 | 6551 | 7857 | 9339 | 11008 |
| | | 40 | 2710 | 3402 | 4245 | 5248 | 6423 | 7778 | 9325 | 11074 | 13035 |
| | | 30 | 3096 | 3874 | 4827 | 5966 | 7302 | 8843 | 10601 | 12586 | 14808 |
| | Power (W) | 50 | 3297 | 3464 | 3635 | 3810 | 3989 | 4173 | 4362 | 4556 | 4756 |
| | | 40 | 2739 | 2892 | 3049 | 3210 | 3376 | 3547 | 3723 | 3906 | 4094 |
| | | 30 | 2346 | 2478 | 2614 | 2754 | 2900 | 3051 | 3208 | 3371 | 3540 |
| YF13E1G-Q100 | Capacity (W) | 50 | 860 | 1074 | 1334 | 1645 | 2010 | 2433 | 2918 | 3469 | 4089 |
| | | 40 | 1007 | 1264 | 1577 | 1949 | 2386 | 2889 | 3464 | 4113 | 4842 |
| | | 30 | 1150 | 1439 | 1793 | 2216 | 2712 | 3285 | 3938 | 4675 | 5500 |
| | Power (W) | 50 | 1342 | 1414 | 1487 | 1561 | 1638 | 1717 | 1797 | 1881 | 1966 |
| | | 40 | 1102 | 1167 | 1234 | 1303 | 1374 | 1447 | 1523 | 1601 | 1681 |
| | | 30 | 932 | 988 | 1047 | 1107 | 1169 | 1234 | 1301 | 1371 | 1443 |

Remark: Suction Temperature 20°C, No Subcooling

YF Series

Capacity

50Hz

R452A

| Model | C.T. (°C) | E.T. (°C) | | | | | | | | | |
|---------------------|--------------|-----------|------|------|------|------|------|-------|-------|-------|-------|
| | | -40 | -35 | -30 | -25 | -20 | -15 | -10 | -5 | 0 | |
| YF17E1G-Q100 | Capacity (w) | 50 | 1099 | 1371 | 1704 | 2101 | 2567 | 3107 | 3726 | 4429 | 5221 |
| | | 40 | 1285 | 1614 | 2013 | 2489 | 3046 | 3689 | 4423 | 5252 | 6182 |
| | | 30 | 1468 | 1837 | 2289 | 2830 | 3463 | 4194 | 5028 | 5969 | 7023 |
| | Power (w) | 50 | 1699 | 1789 | 1881 | 1976 | 2073 | 2173 | 2275 | 2380 | 2489 |
| | | 40 | 1394 | 1477 | 1562 | 1649 | 1739 | 1832 | 1927 | 2026 | 2128 |
| | | 30 | 1180 | 1251 | 1324 | 1401 | 1480 | 1561 | 1646 | 1735 | 1826 |
| YF20E1G-Q100 | Capacity (w) | 50 | 1290 | 1611 | 2002 | 2468 | 3015 | 3650 | 4377 | 5203 | 6133 |
| | | 40 | 1510 | 1896 | 2365 | 2924 | 3578 | 4334 | 5196 | 6170 | 7262 |
| | | 30 | 1725 | 2158 | 2689 | 3324 | 4068 | 4927 | 5906 | 7012 | 8250 |
| | Power (w) | 50 | 1978 | 2083 | 2191 | 2301 | 2414 | 2530 | 2649 | 2771 | 2898 |
| | | 40 | 1624 | 1720 | 1819 | 1920 | 2025 | 2133 | 2244 | 2359 | 2478 |
| | | 30 | 1374 | 1457 | 1542 | 1631 | 1723 | 1818 | 1917 | 2020 | 2127 |
| YF25E1G-Q100 | Capacity (w) | 50 | 1721 | 2148 | 2669 | 3291 | 4021 | 4867 | 5837 | 6938 | 8178 |
| | | 40 | 2013 | 2527 | 3153 | 3899 | 4771 | 5778 | 6927 | 8227 | 9683 |
| | | 30 | 2300 | 2878 | 3586 | 4432 | 5424 | 6569 | 7875 | 9350 | 11000 |
| | Power (w) | 50 | 2592 | 2730 | 2870 | 3015 | 3163 | 3315 | 3471 | 3631 | 3797 |
| | | 40 | 2128 | 2254 | 2383 | 2516 | 2653 | 2794 | 2940 | 3091 | 3246 |
| | | 30 | 1800 | 1909 | 2021 | 2137 | 2257 | 2382 | 2512 | 2647 | 2786 |
| YF29E1G-Q100 | Capacity (w) | 50 | 1952 | 2437 | 3028 | 3733 | 4562 | 5522 | 6622 | 7872 | 9278 |
| | | 40 | 2284 | 2868 | 3578 | 4423 | 5413 | 6556 | 7860 | 9334 | 10987 |
| | | 30 | 2609 | 3265 | 4069 | 5029 | 6154 | 7454 | 8935 | 10608 | 12481 |
| | Power (w) | 50 | 2729 | 2874 | 3022 | 3174 | 3330 | 3490 | 3655 | 3824 | 3998 |
| | | 40 | 2240 | 2373 | 2509 | 2649 | 2794 | 2942 | 3096 | 3254 | 3418 |
| | | 30 | 1895 | 2010 | 2128 | 2250 | 2377 | 2508 | 2645 | 2787 | 2934 |
| YF35E1G-Q100 | Capacity (w) | 50 | 2316 | 2892 | 3593 | 4429 | 5412 | 6551 | 7857 | 9339 | 11008 |
| | | 40 | 2710 | 3402 | 4245 | 5248 | 6423 | 7778 | 9325 | 11074 | 13035 |
| | | 30 | 3096 | 3874 | 4827 | 5966 | 7302 | 8843 | 10601 | 12586 | 14808 |
| | Power (w) | 50 | 3137 | 3304 | 3475 | 3649 | 3828 | 4012 | 4201 | 4396 | 4596 |
| | | 40 | 2575 | 2728 | 2885 | 3046 | 3212 | 3383 | 3559 | 3741 | 3930 |
| | | 30 | 2179 | 2310 | 2446 | 2587 | 2733 | 2884 | 3041 | 3204 | 3373 |
| YF41E1G-Q100 | Capacity (w) | 50 | 2713 | 3387 | 4209 | 5189 | 6340 | 7674 | 9204 | 10940 | 12895 |
| | | 40 | 3175 | 3986 | 4973 | 6148 | 7524 | 9112 | 10924 | 12973 | 15270 |
| | | 30 | 3627 | 4538 | 5655 | 6989 | 8553 | 10359 | 12419 | 14744 | 17346 |
| | Power (w) | 50 | 3647 | 3841 | 4039 | 4242 | 4450 | 4664 | 4884 | 5110 | 5343 |
| | | 40 | 2994 | 3171 | 3353 | 3540 | 3733 | 3932 | 4137 | 4349 | 4568 |
| | | 30 | 2533 | 2686 | 2844 | 3007 | 3176 | 3352 | 3535 | 3724 | 3921 |
| YF45E1G-Q100 | Capacity (w) | 50 | 2978 | 3718 | 4619 | 5695 | 6959 | 8423 | 10102 | 12007 | 14153 |
| | | 40 | 3485 | 4374 | 5458 | 6748 | 8258 | 10001 | 11990 | 14238 | 16759 |
| | | 30 | 3980 | 4980 | 6206 | 7671 | 9388 | 11370 | 13630 | 16182 | 19039 |
| | Power (w) | 50 | 3798 | 4000 | 4207 | 4418 | 4635 | 4858 | 5086 | 5322 | 5564 |
| | | 40 | 3118 | 3302 | 3492 | 3687 | 3888 | 4095 | 4309 | 4530 | 4757 |
| | | 30 | 2638 | 2797 | 2962 | 3132 | 3308 | 3491 | 3681 | 3878 | 4083 |

Remark: Suction Temperature 20°C, No Subcooling

YIF Series

Capacity

50Hz R404A

| Model | C.T. (°C) | E.T. (°C) | | | | | | | | | |
|----------------------|-----------------|-----------|------|------|------|------|------|-------|-------|-------|-------|
| | | -40 | -35 | -30 | -25 | -20 | -15 | -10 | -5 | 0 | |
| YIF38E1G-Q100 | Capacity (W) | 50 | 1702 | 2149 | 2495 | 3289 | 4016 | 4870 | 5868 | 7027 | 8363 |
| | | 40 | 1951 | 2445 | 2840 | 3764 | 4622 | 5635 | 6820 | 8194 | 9773 |
| | | 30 | 2208 | 2741 | 3178 | 4221 | 5202 | 6366 | 7729 | 9309 | 11123 |
| | Power (W) | 50 | 3267 | 3262 | 3272 | 3317 | 3367 | 3426 | 3488 | 3549 | 3603 |
| | | 40 | 2586 | 2600 | 2622 | 2687 | 2750 | 2819 | 2888 | 2954 | 3010 |
| | | 30 | 2062 | 2085 | 2111 | 2181 | 2245 | 2312 | 2377 | 2436 | 2484 |
| YIF42E1G-Q100 | Capacity (W) | 50 | 1881 | 2375 | 2953 | 3635 | 4439 | 5383 | 6486 | 7766 | 9243 |
| | | 40 | 2157 | 2703 | 3364 | 4160 | 5109 | 6228 | 7538 | 9056 | 10801 |
| | | 30 | 2441 | 3030 | 3765 | 4666 | 5750 | 7036 | 8543 | 10289 | 12294 |
| | Power (W) | 50 | 3611 | 3605 | 3625 | 3666 | 3721 | 3786 | 3855 | 3922 | 3982 |
| | | 40 | 2858 | 2874 | 2913 | 2970 | 3040 | 3115 | 3192 | 3265 | 3327 |
| | | 30 | 2279 | 2304 | 2350 | 2411 | 2481 | 2555 | 2627 | 2693 | 2745 |
| YIF50E1G-Q100 | Capacity (W) | 50 | 2240 | 2827 | 3283 | 4327 | 5284 | 6408 | 7721 | 9245 | 11003 |
| | | 40 | 2568 | 3218 | 3737 | 4953 | 6082 | 7415 | 8974 | 10781 | 12859 |
| | | 30 | 2906 | 3607 | 4182 | 5554 | 6845 | 8376 | 10170 | 12249 | 14635 |
| | Power (W) | 50 | 4298 | 4292 | 4305 | 4364 | 4430 | 4508 | 4589 | 4669 | 4740 |
| | | 40 | 3402 | 3421 | 3451 | 3536 | 3619 | 3709 | 3800 | 3887 | 3961 |
| | | 30 | 2713 | 2743 | 2778 | 2870 | 2954 | 3042 | 3128 | 3206 | 3268 |
| YIF60E1G-Q100 | Capacity (W) | 50 | 2688 | 3393 | 3940 | 5193 | 6341 | 7689 | 9265 | 11094 | 13204 |
| | | 40 | 3081 | 3861 | 4484 | 5943 | 7298 | 8898 | 10769 | 12937 | 15430 |
| | | 30 | 3487 | 4328 | 5018 | 6665 | 8214 | 10051 | 12204 | 14699 | 17562 |
| | Power (W) | 50 | 5158 | 5150 | 5166 | 5237 | 5316 | 5409 | 5507 | 5603 | 5688 |
| | | 40 | 4083 | 4106 | 4141 | 4243 | 4342 | 4451 | 4561 | 4664 | 4753 |
| | | 30 | 3256 | 3292 | 3334 | 3444 | 3544 | 3650 | 3754 | 3847 | 3922 |
| YIF72E1G-Q100 | Capacity (W) | 50 | 3225 | 4071 | 4728 | 6232 | 7609 | 9227 | 11118 | 13313 | 15845 |
| | | 40 | 3697 | 4633 | 5381 | 7132 | 8758 | 10677 | 12922 | 15525 | 18517 |
| | | 30 | 4184 | 5194 | 6022 | 7998 | 9857 | 12062 | 14645 | 17639 | 21075 |
| | Power (W) | 50 | 6190 | 6180 | 6199 | 6284 | 6380 | 6491 | 6609 | 6724 | 6826 |
| | | 40 | 4899 | 4927 | 4969 | 5092 | 5211 | 5341 | 5473 | 5597 | 5704 |
| | | 30 | 3907 | 3950 | 4000 | 4133 | 4253 | 4380 | 4504 | 4616 | 4706 |

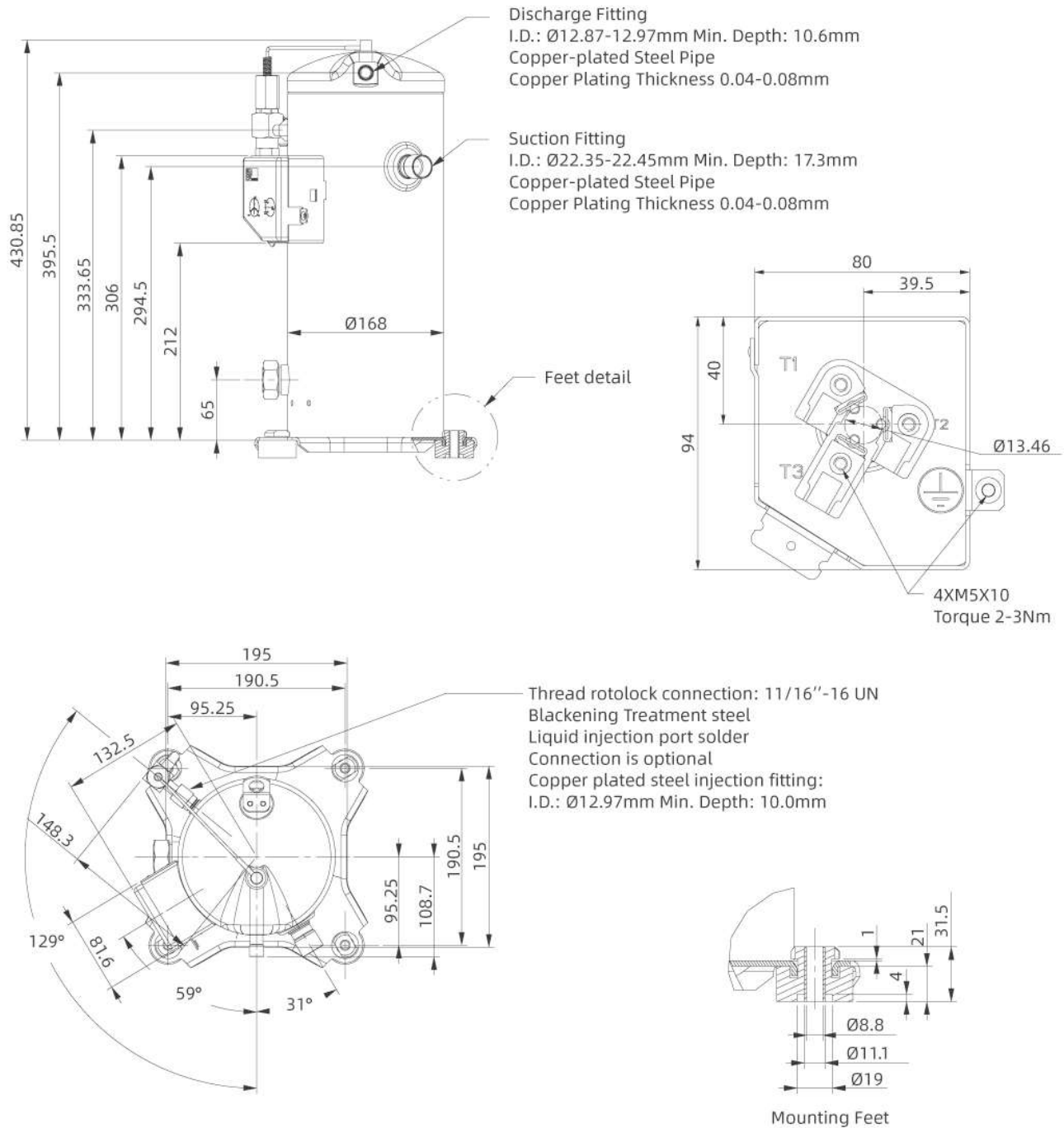
Remark: Capacity @4500RPM, please check with INVOTECH for more information.
Suction Temperature 20 C , No Subcooling

YF Series

Dimensions

Liquid Injection

2-4HP(1Ph),2-4HP(3Ph)

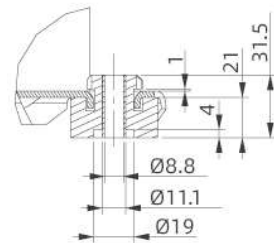
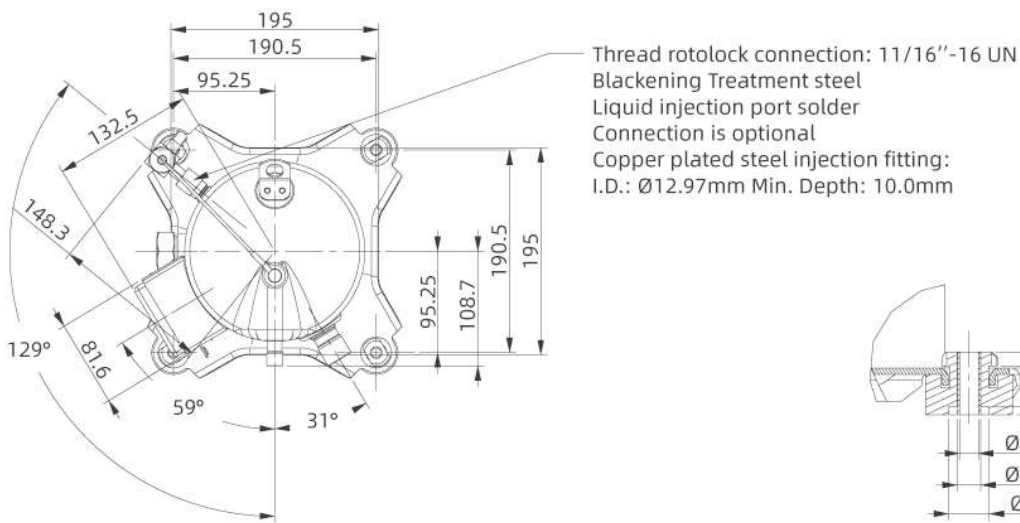
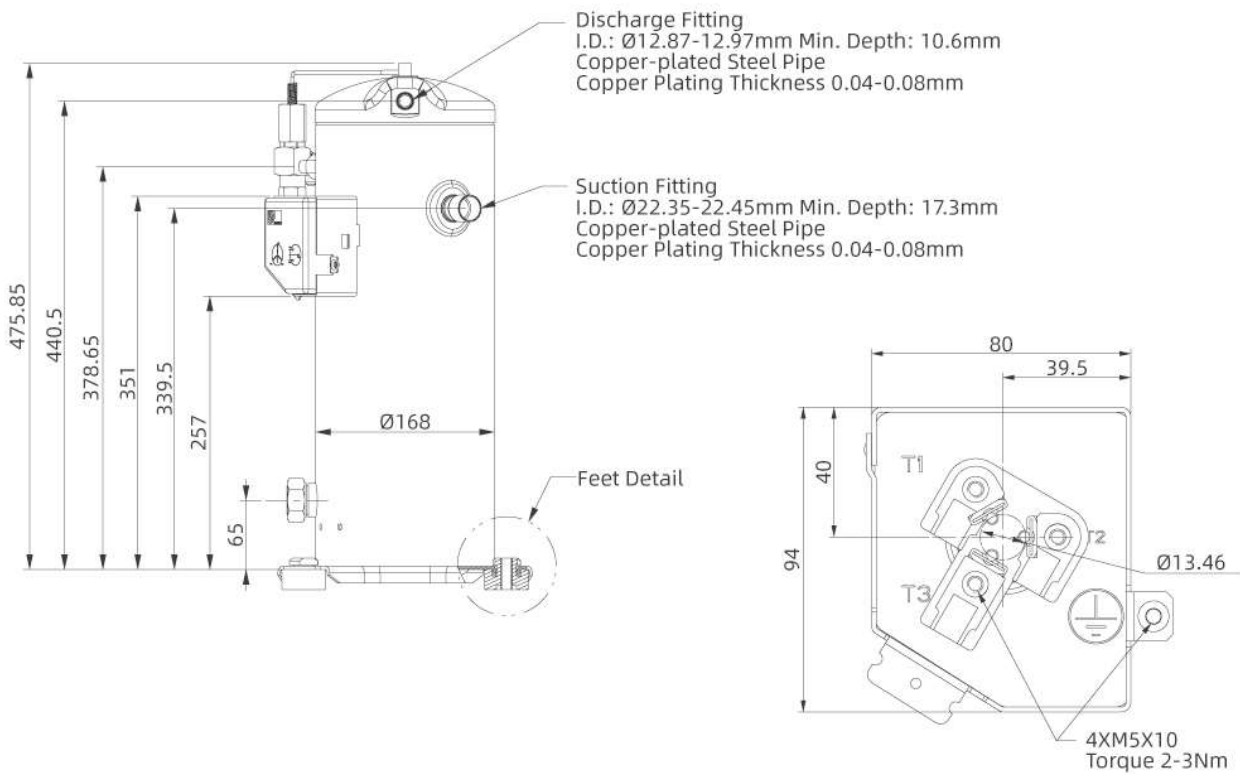


YF Series

Dimensions

Liquid Injection

5HP(1Ph), 5-7HP(3Ph)



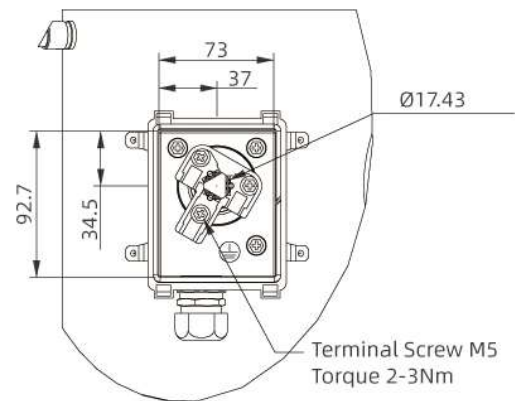
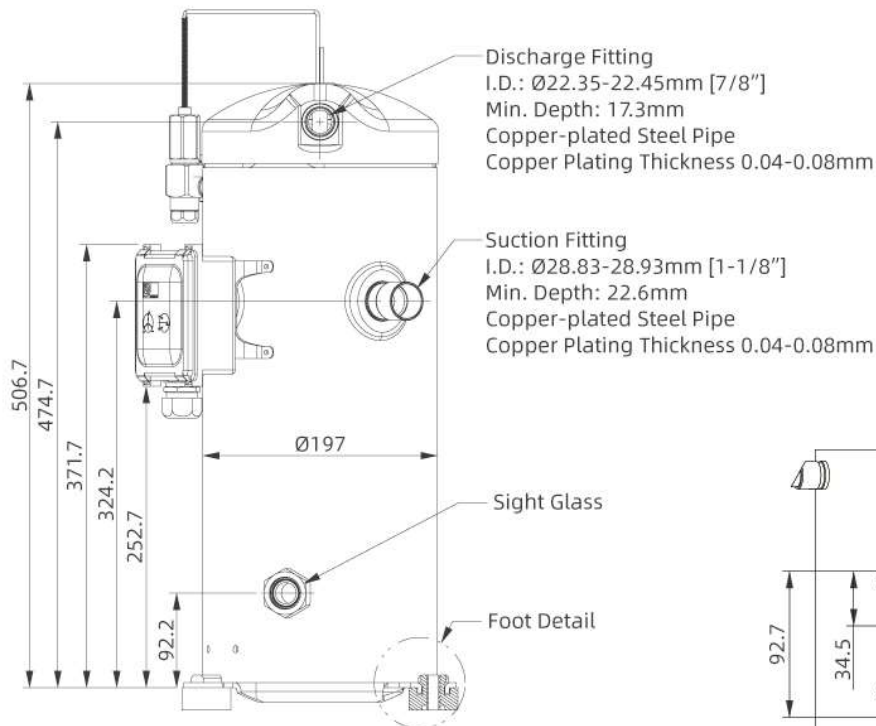
Mounting Feet

YF Series

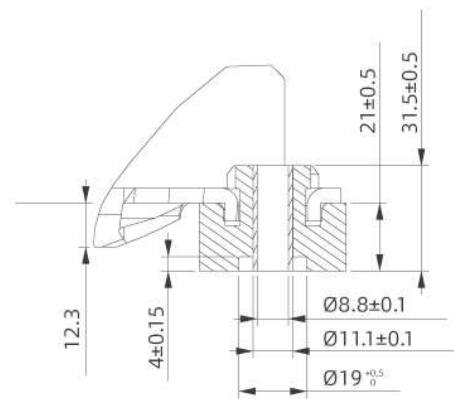
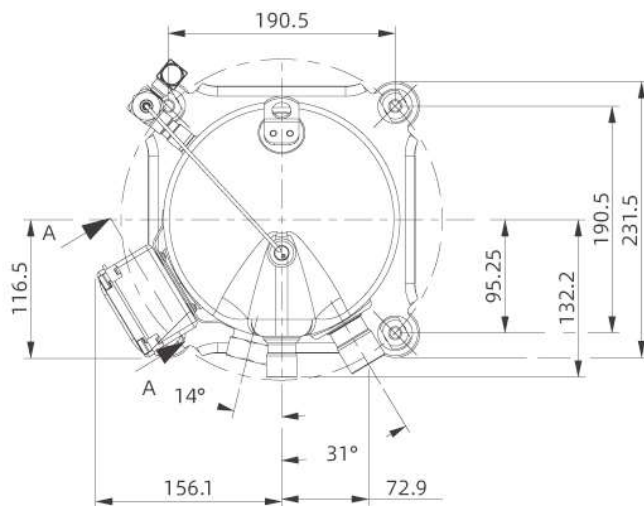
Dimensions

Liquid Injection

8-12HP(3Ph)



T-Box Layout
View A-A



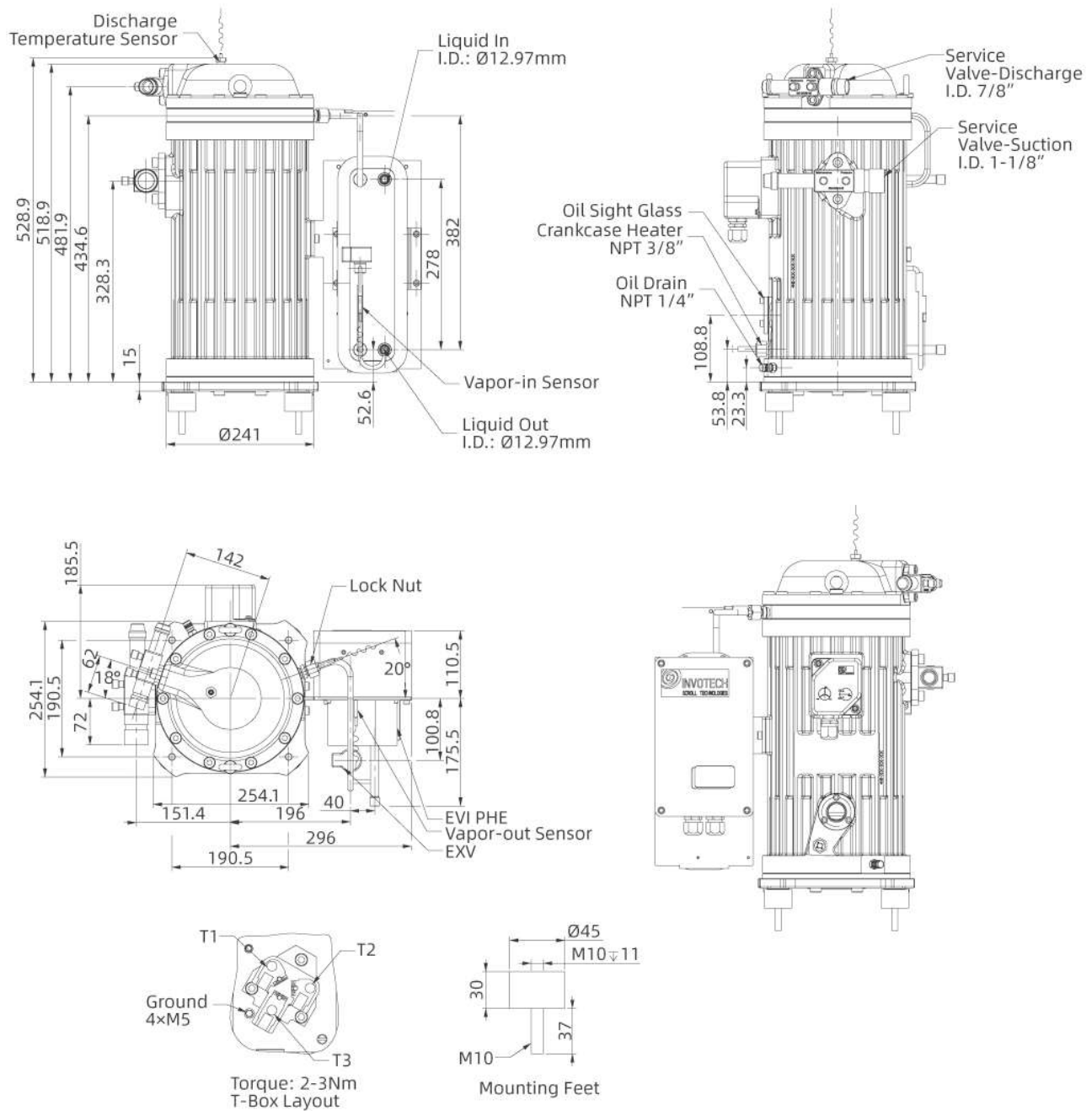
Foot Detail

YSF Series

Vapor Injection

Dimensions

YSF60-YSF100

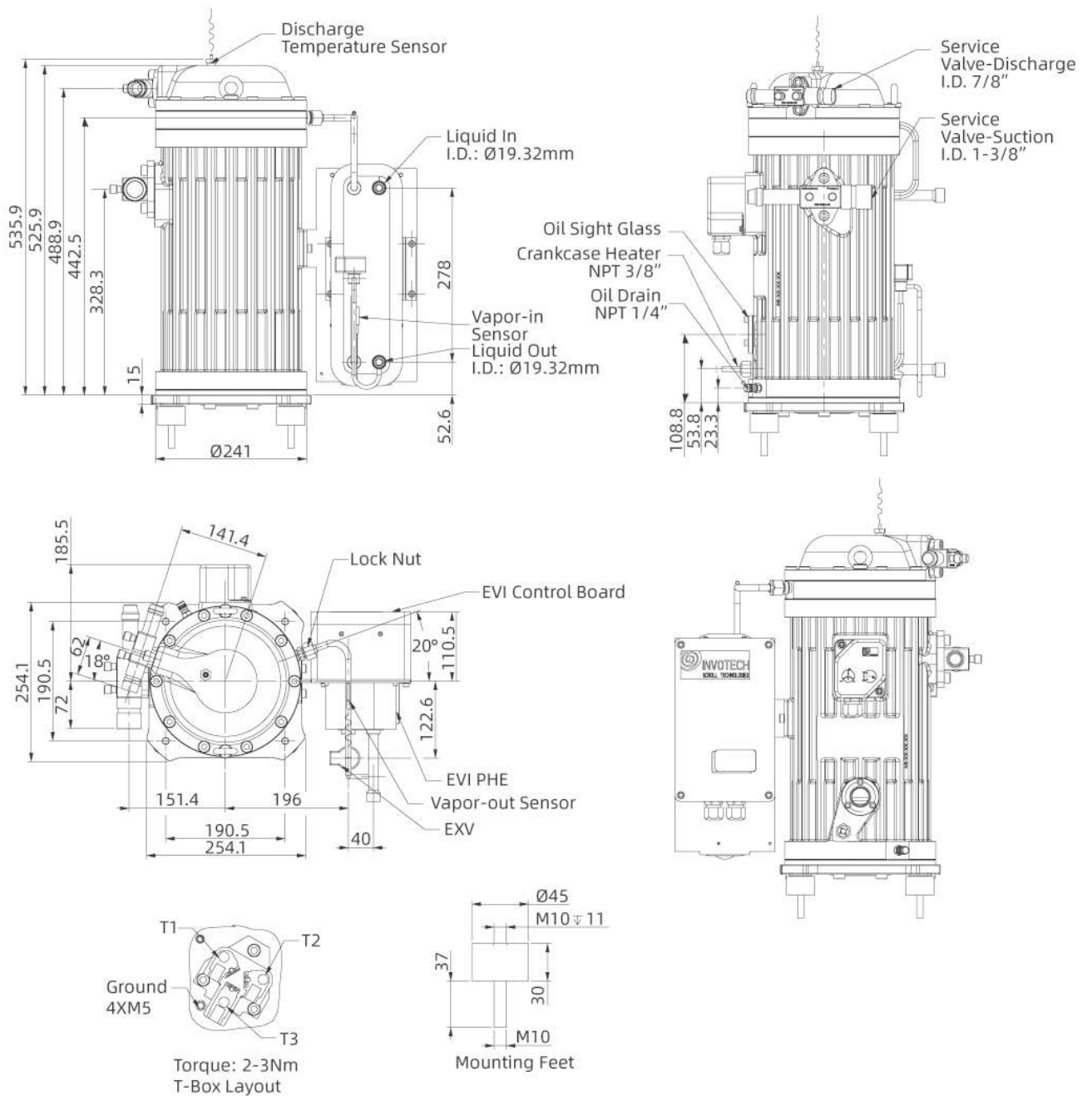


YSF Series

Dimensions

Vapor Injection

YSF125

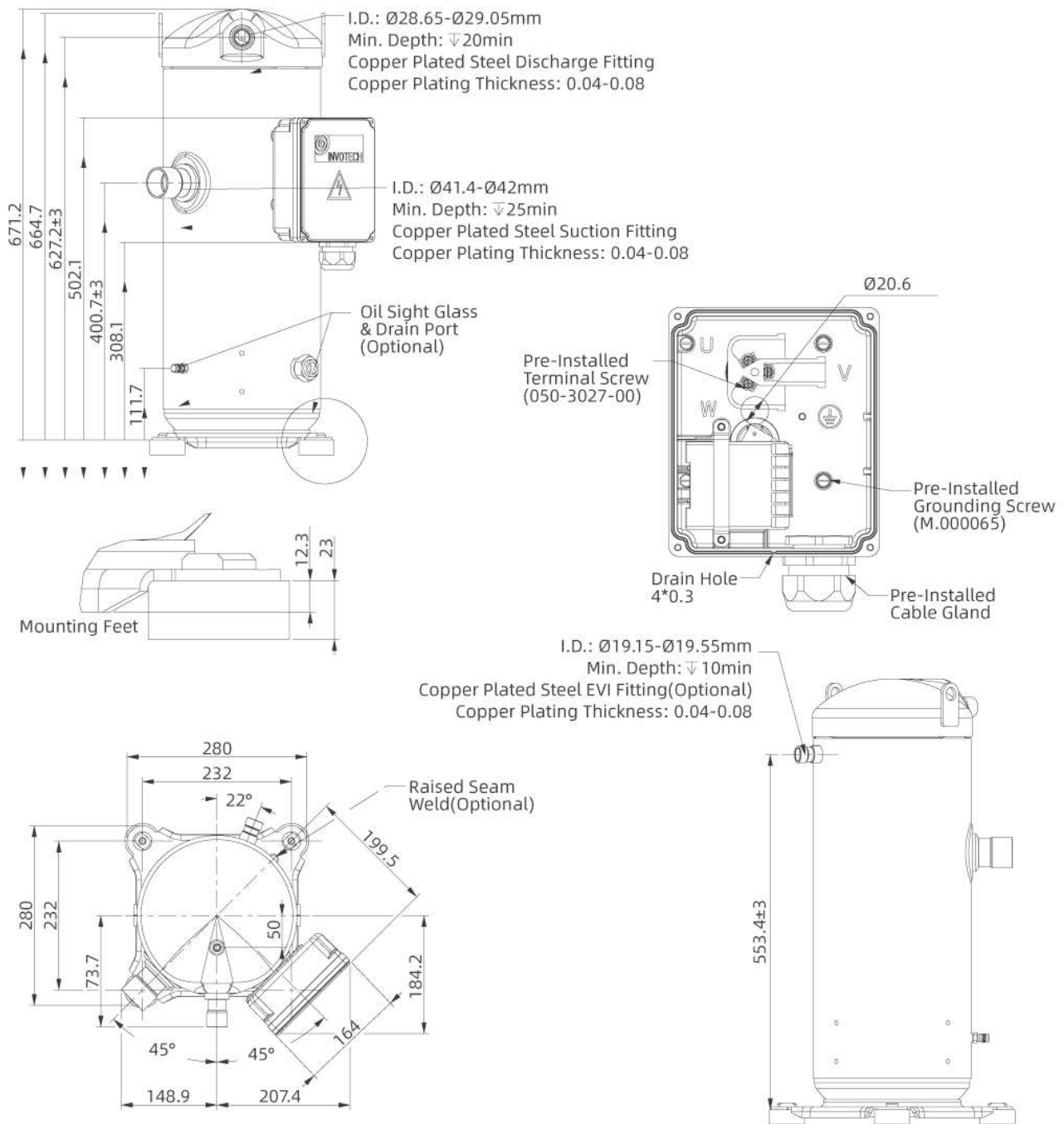


YF Series

Vapor Injection

Dimensions

16-25HP

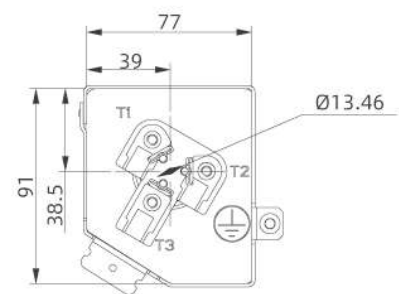
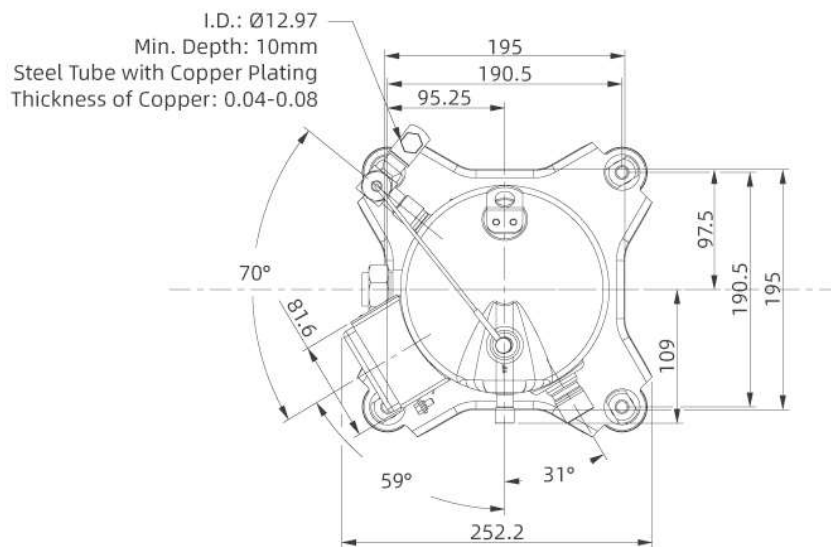
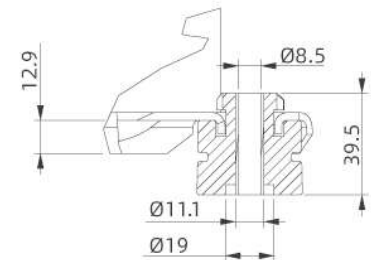
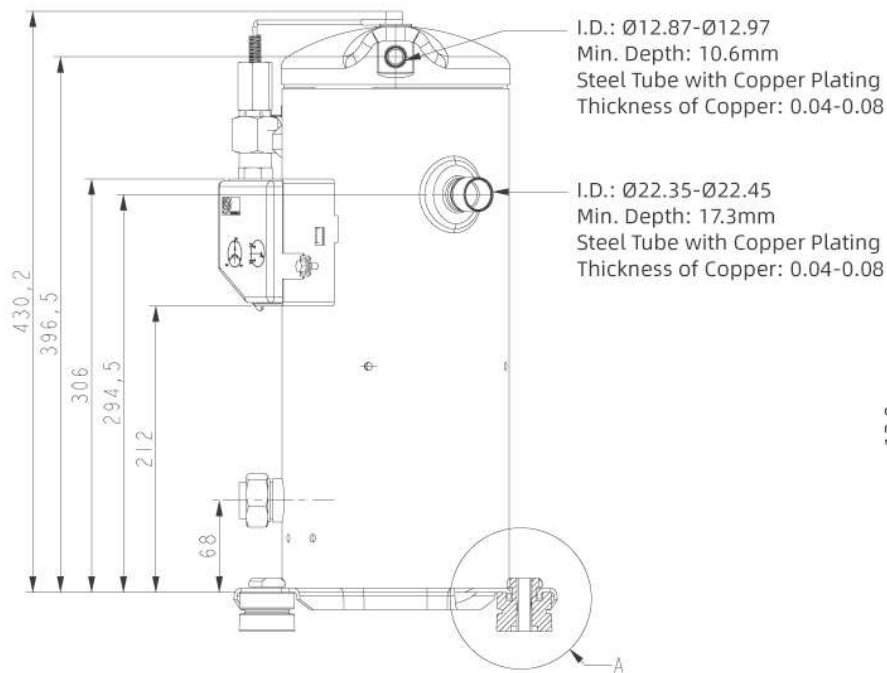


YIF Series

Dimensions

Liquid Injection

YIF38-72



YSF Series

Application instruction

Main Features of YSF Series:

- Classic vertical design
- Maintainability
 - Semi-hermetic design, all the parts can be removed and replaced
- Higher reliability
 - Dual compliances design
 - Strong capability to tolerate liquid flood back and impurities
- Less vibration and noise
- Wide operating range
 - Integrated EVI technologies
 - The evaporating temperature can be lower to -40°C
- Higher energy efficiency
 - High compression ratio is specially designed for refrigeration
 - Efficient economizer cycle
- More intelligent design
 - Control of EVI

1. Safety Instructions:

YSF serials Semi-hermetic scroll compressors are produced in strict accordance with international safety standards. This section focuses on safe use of a user. Before carrying out any operation, this safety instruction should be carefully read. Please reserve it for reference at any time.

The compressor should be installed, tested and maintained by specialized technicians only; electrical connections must be operated by authorized and trained personnel.

Attention:

- Avoid collision and fall down during the transportation
- Lubricant must be correctly chosen and be the same as indicated on the compressor's nameplate
- Ensure that the power supply can satisfy the specific parameter as is shown on the compressor's nameplate
- Release the internal pressure before operating, the compressor is filled with dry nitrogen while leaving the factory

Prohibition:

- Extract vacuum using the scroll compressors
- Run the compressor which is in vacuum status
- Apply power to the compressor which doesn't connect to system
- Run the compressor without charging refrigerant
- Run the compressor outside of the published envelope
- Discharge refrigerant directly into environment
- Hi-pot test in vacuum status

Warning:

- Strictly forbid the excess of pressure marked on the nameplate while running the compressor or checking the leakage of refrigerating system
- Strictly forbid running the compressor with air, for the mixture of air and oil may explore due to great heat contracted in the discharge port. It will cause damages to the compressor
- Completely open the suction and discharge valve before starting the compressor. It is very importance to open the discharge valve fully. If it is closed or partly closed, unacceptable high pressure and temperature will be produced inside the compressor
- Be sure to comply with relevant safety regulations

Avoid electric shock:

- Be sure to cut off power supply before operating
- The compressor can only be used after being connected to earth

YSF Series

Application instruction

2. Nameplate sample



3. Settings of pressure switches:

Attention: It is necessary to use a high pressure switch, the biggest cut out pressure should be below 28 bar(g). In order to protect the system as well as possible, the high pressure switch should possess the function of manual resetting whenever it is cut off. For all of the applications, the cut out set value of low pressure switch should not be lower than 0.1 bar(g). When setting the operating point of the low pressure switch, an accurate pressure gauge should be used because scales on the low pressure switch are for rough setting only. It is absolutely forbidden to run the compressor of YSF series in vacuum. Low pressure switch points must access to the connection port of low pressure switch on the compressor body.

4. Precaution of refrigerator oil

Don't mix up ester oil, mineral oil or alkyl benzene. The compressor has been filled with lubricant in advance before leaving the factory.

Compressors with POE oil are available for R404A. The initial amount of oil is marked on the nameplate and the re-charge amount on the field site can be around 100 ml less than the initial one.

YSF Series

Application instruction

5. Installation

5.1 Shipment

Check packing lists which are attached to cases of each batch of goods carefully to make sure that both accessories and compressors are received. Invotech Company should be immediately informed of missing items in written form.

Standard configurations

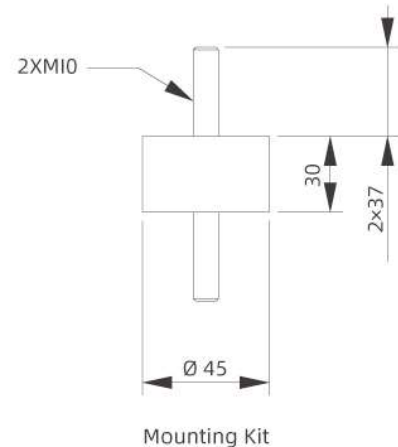
- Suction service valve and discharge service valve
- Economizer (PHE)
- Crankcase heater
- Refrigerating oil filling, oil level sight glass
- Electronic expansion valve
- Electronic control board
- Mounting kits

5.1.2 Packing

All the compressors of YSF series are individually packed. Accessories may be installed on the compressors or be placed inside the cases. Packages need keeping dry all the time.

5.1.3 Mounting Kits

Attention: In order to reduce vibration generated during starting and stopping cycle as much as possible, mounting kits should be used while installing the compressor. To maintain sufficient lubrication of moving parts, the compressor should be vertically installed.



5.2 Pipe welding and compressor installation

5.2.1 Welding

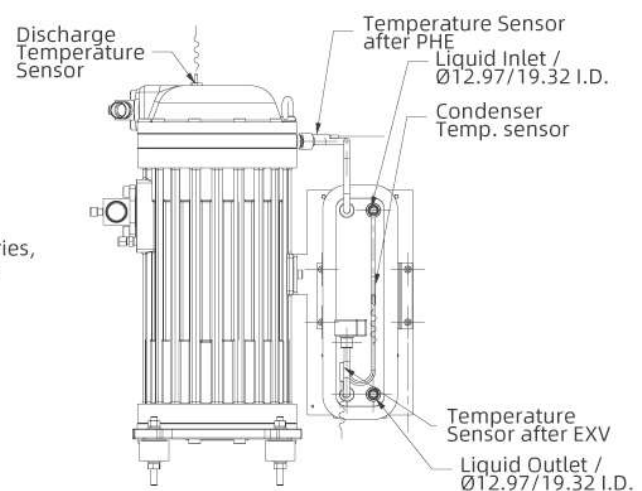
- While welding all the joints, be sure to protect the system by charging nitrogen for it can remove oxygen to prevent oxide skin inside the pipe wall.
- Welding material which is recommended: any Cu-Ag alloy can be used, and it is best to contain 45% silver solder.
- Wrap the suction and discharge service valves with wet cloth before welding.

5.2.2 Connection of the compressor

The liquid inlet of main line:
connect to outlet of condenser

The liquid outlet of main line:
connect to entrance of expansion valve

In order to prevent impurities from invading into suction side of the compressors, Invotech specially installs the suction filter at the intake port of semi-hermetic scroll compressors of YSF series, so users must connect the low pressure switch to the connection port on the compressor body.



YSF Series

Application instruction

5.2.3 Pipe connection

Compressors of YSF series have significant features of low vibration, so the discharge pipe and the suction pipe do not need extra vibration absorber. The layout of suction pipe and discharge pipe should try to be close to the compressor as possible and parallel to the axis so that torsion generated from starting and stopping of the compressor can be absorbed.

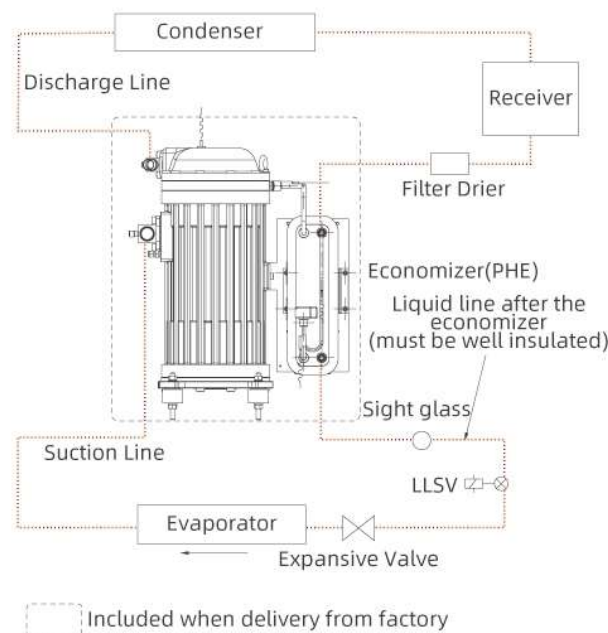
5.2.4 LLSV (Liquid Line Solenoid Valve)

LLSV contributes to separating liquid refrigerant to the low pressure side when the system is off. LLSV should be installed before the main expansion valve and try to approach it so that most of the liquid refrigerant can be reserved at the high pressure side. LLSV can prevent liquid migration on the off cycle. If the migration occurs during the off cycle, liquid is in the crankcase, when the compressor start next time, the explosion of the refrigerant out of the oil is a flood start. It is very dangerous to the compressor.

5.2.5 Insulation of liquid line

In the system of YSF series compressors, the liquid after the economizer is sub-cooled, and the sub-cooling of the liquid contribute to improve refrigerating capacity and efficiency of the system. No matter what makes the temperature of liquid rise, it will lead to the loss of capacity and efficiency of the system. So the liquid pipe after the economizer (PHE) must be well insulated and there is no need insulating the liquid pipe before the economizer.

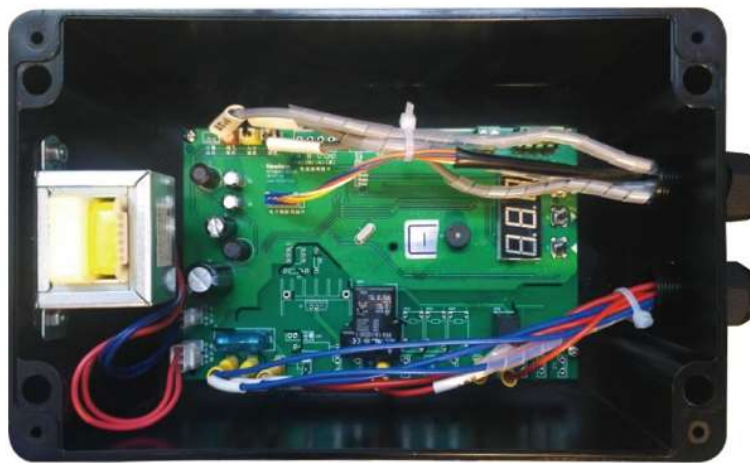
6. Casual loop diagram of compressors of YSF series



YSF Series

Application instruction

7. Electrical connection



7.1 Three-phase motor

All the compressors of YSF series are three-phase, which can be directly start.

7.2 Standard type control board

The control board is a dedicated one for EVI scroll compressors. It is used to detect temperatures and control the operation of both the compressor and electronic expansion valve.

Main technical index:

Supply voltage: AC220V±10%,50/60Hz

Operating environment: temperature -10°C~50°C, humidity≤85%,no condensation, no corrosion

Contact outle capacity: 2A/250VAC (pure resistant load)

Thermal sensor: NTC R25=5kΩ, B(25/50)=3470K

Main function:

Control of the compressor:

Start and stop the compressor according to switch signal (passive switching mode contact, no power)

Crankcase heater:

It works when the compressor stops and it ceases heating once the compressor works.

Control of electronic expansion valve for vapor injection

Warning of high discharge temperature:

Give an alarm when discharge temperature goes out of the upper limit and cancel the alarm when the temperature is down and less than the lower limit. If the alarm takes place more than three times in one hour, the compressor will be locked.

Warning output:

When the alarm appears, the control board will output a passive switch signal to warn.

YSF Series

Application instruction

The first start-up mode:

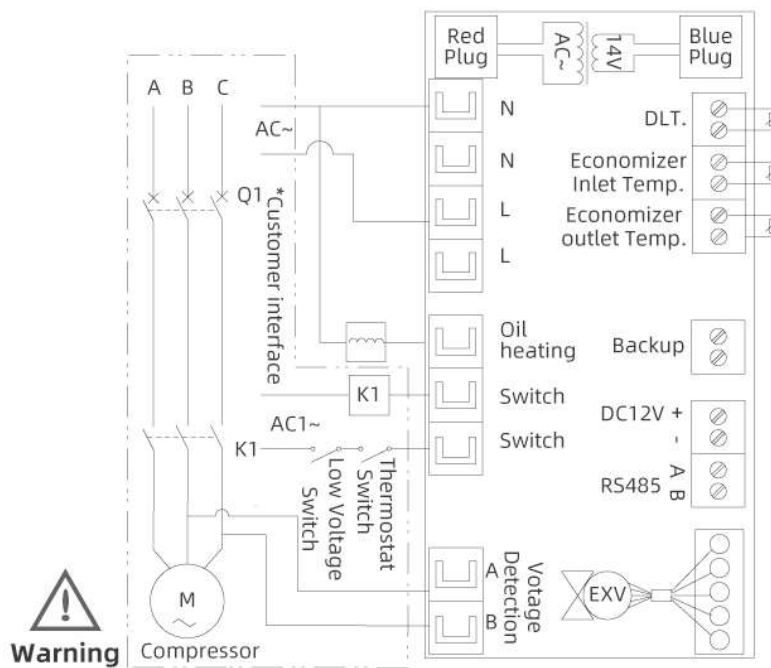
When the compressor meets starting requirements, it should immediately run for 3 seconds and then stop for 17 seconds; repeat for 3 times and then start the normal operation.
Required condition: Reapply power after switching off.

Process of start-up:

1. Apply power: check the signal of start/stop, if it is closed means under the start-up condition
2. Under the start-up condition, delay for 3 minutes, then entry the first start-up mode, and then to start the compressor

Process of shutting down:

Checking the signal of start- up and shutting down if it is open.



Code E07 DLT.exceeds the setting.
Code E08 Discharge probe shorts out or disconnects (displaying "SHr" or "OPE")
Code E12 Probe shorts out or disconnects at the economizer entry (displaying "SHr" or "OPE")
Code E13 Probe shorts out or disconnects at the economizer exit (displaying "SHr" or "OPE")

- NOTES:
1. AC: 1&5&7 220VAC
4 460VAC
 2. AC1~: (250V,8A)max
 3. K1 is Ac Contactor(Match by customer)
 4. Operating Voltage:
 - 1 380V/3PH/50Hz
 - 4 460V/3PH/60Hz
 - 5 380V/3PH/60Hz
 - 7 220V/3PH/60Hz

! Only trained and qualified specialist may operate and maintain the described product



Souzhou Invotech Scroll Technologies Co., Ltd.

No. 5, Yintong Road, Changshu City, Jiangsu Province, P.R. China

Email: scroll@invotech.cn

www.invotech.cn

YF/Y5F/YIF_202409

Every effort has been made to provide accurate description and data. However, due to continuing process of product improvement and evolution, all information in this brochure is subject to change without notification.